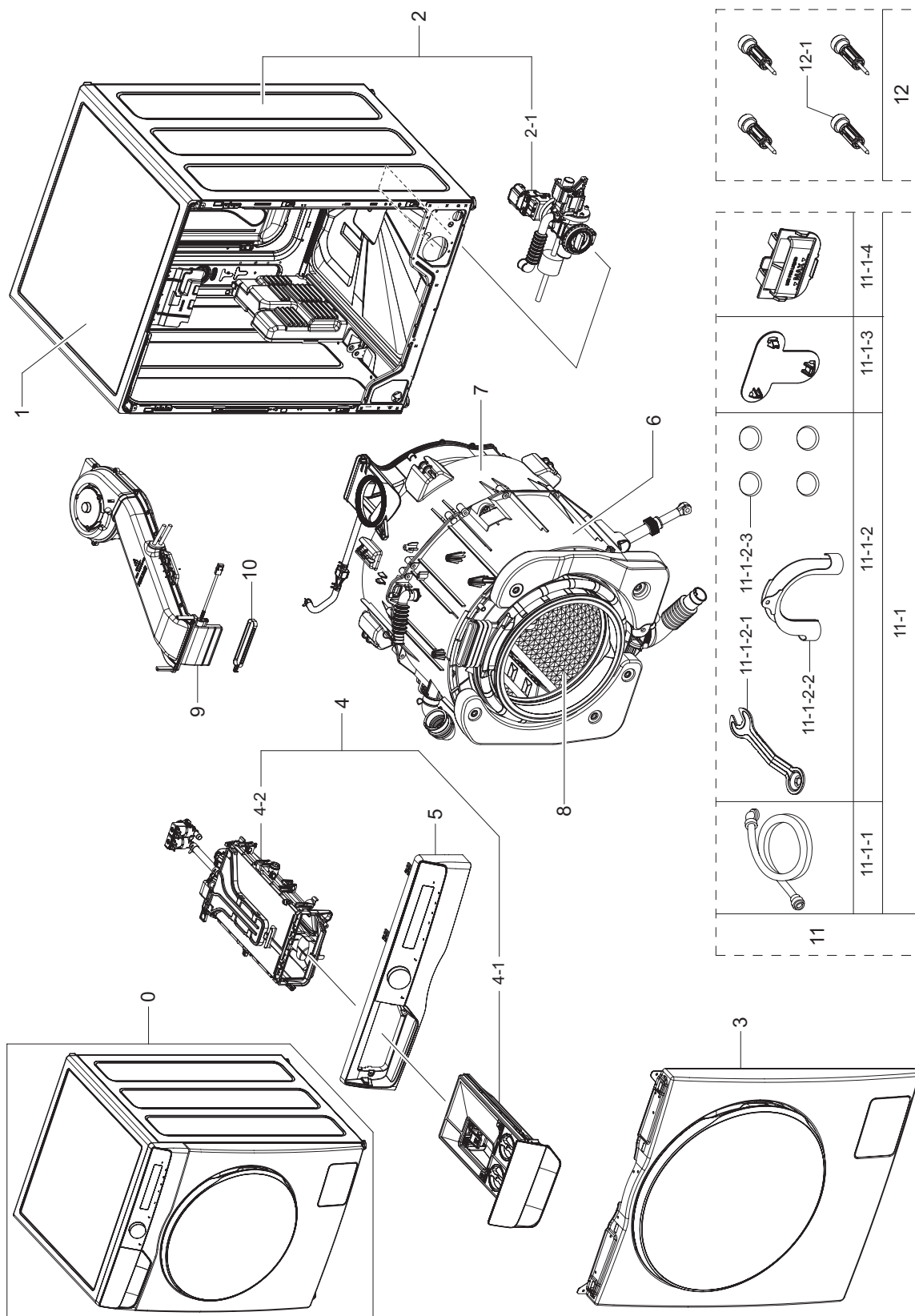
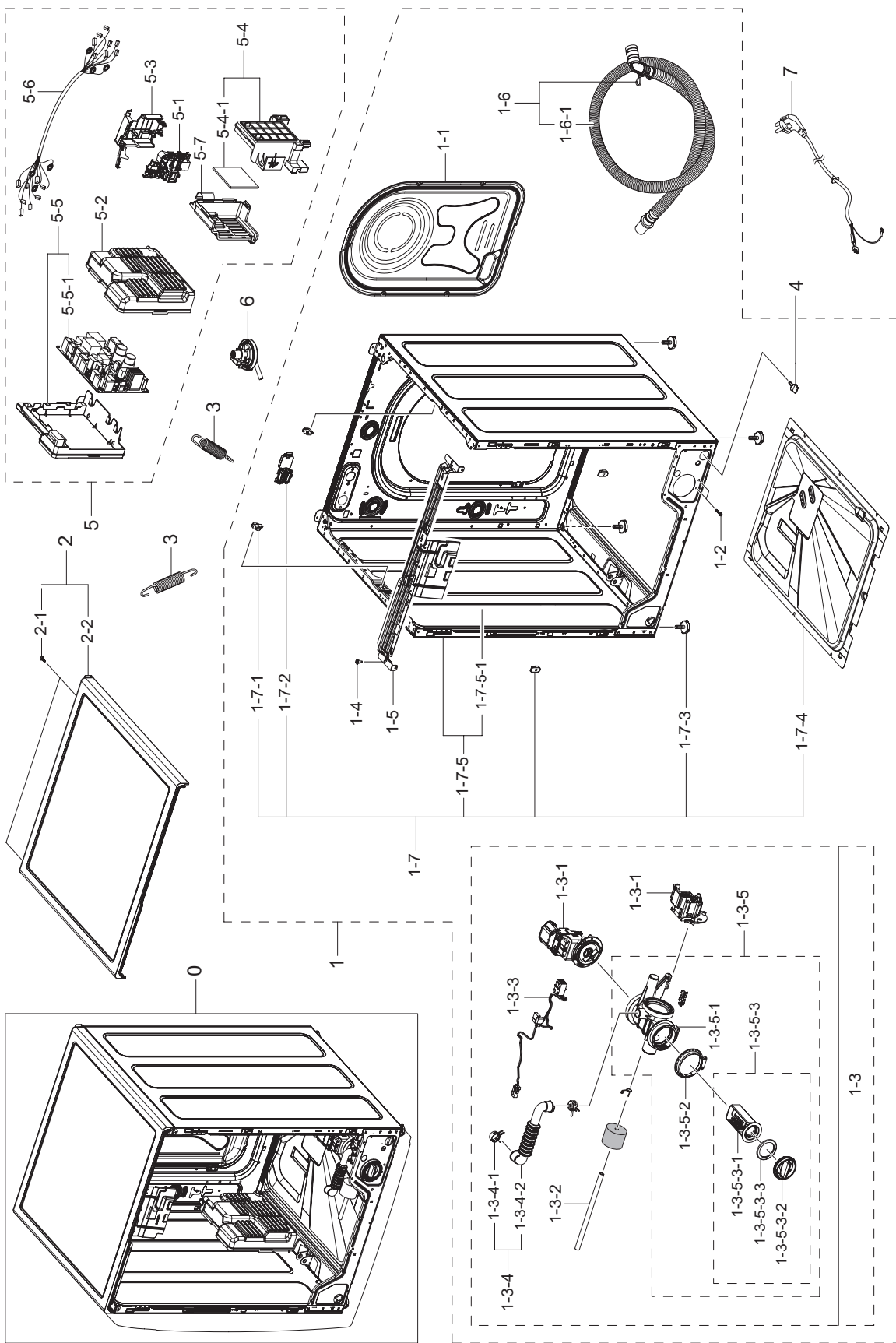


## 1. MAIN (WD90TA046BX/EU)

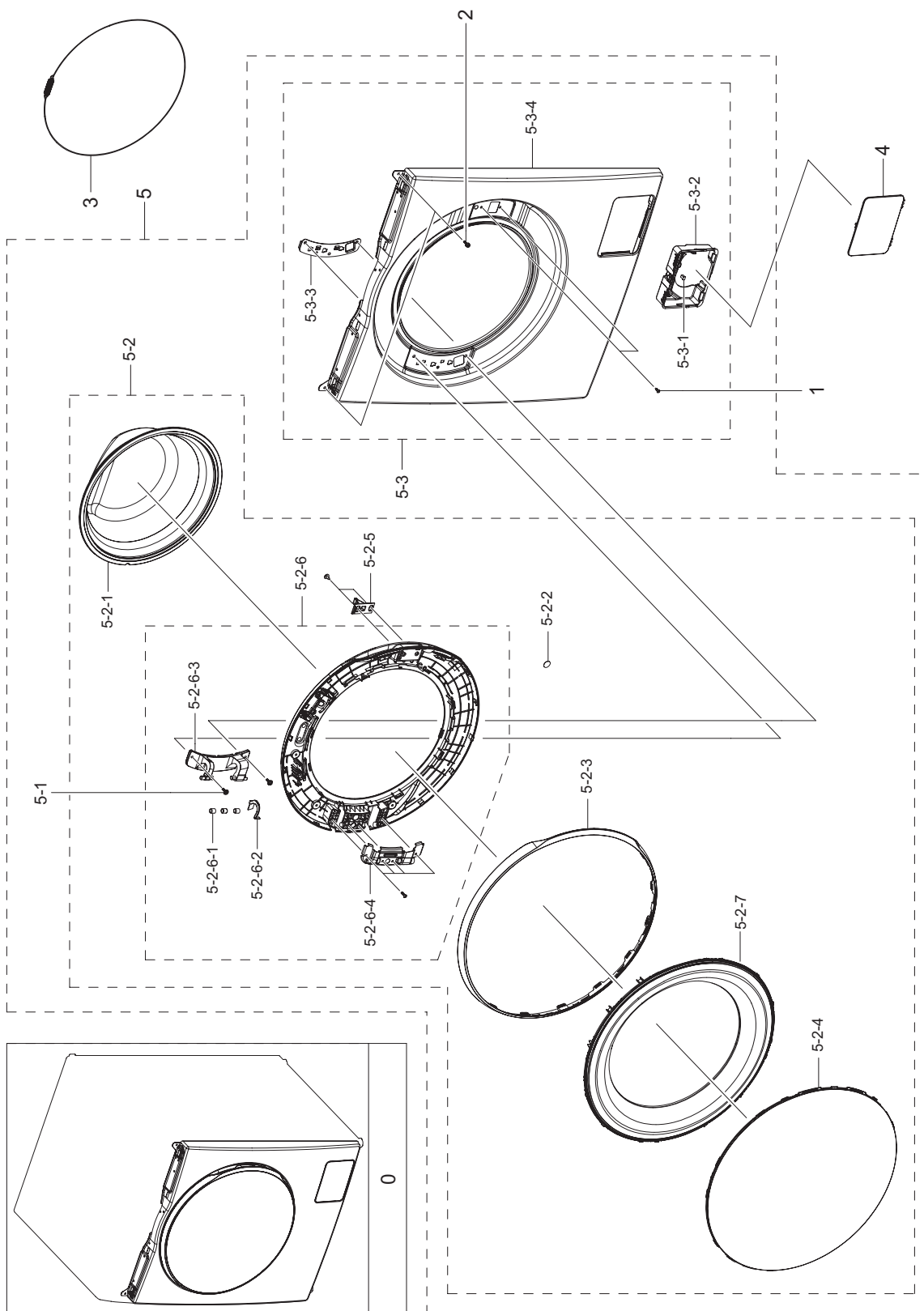




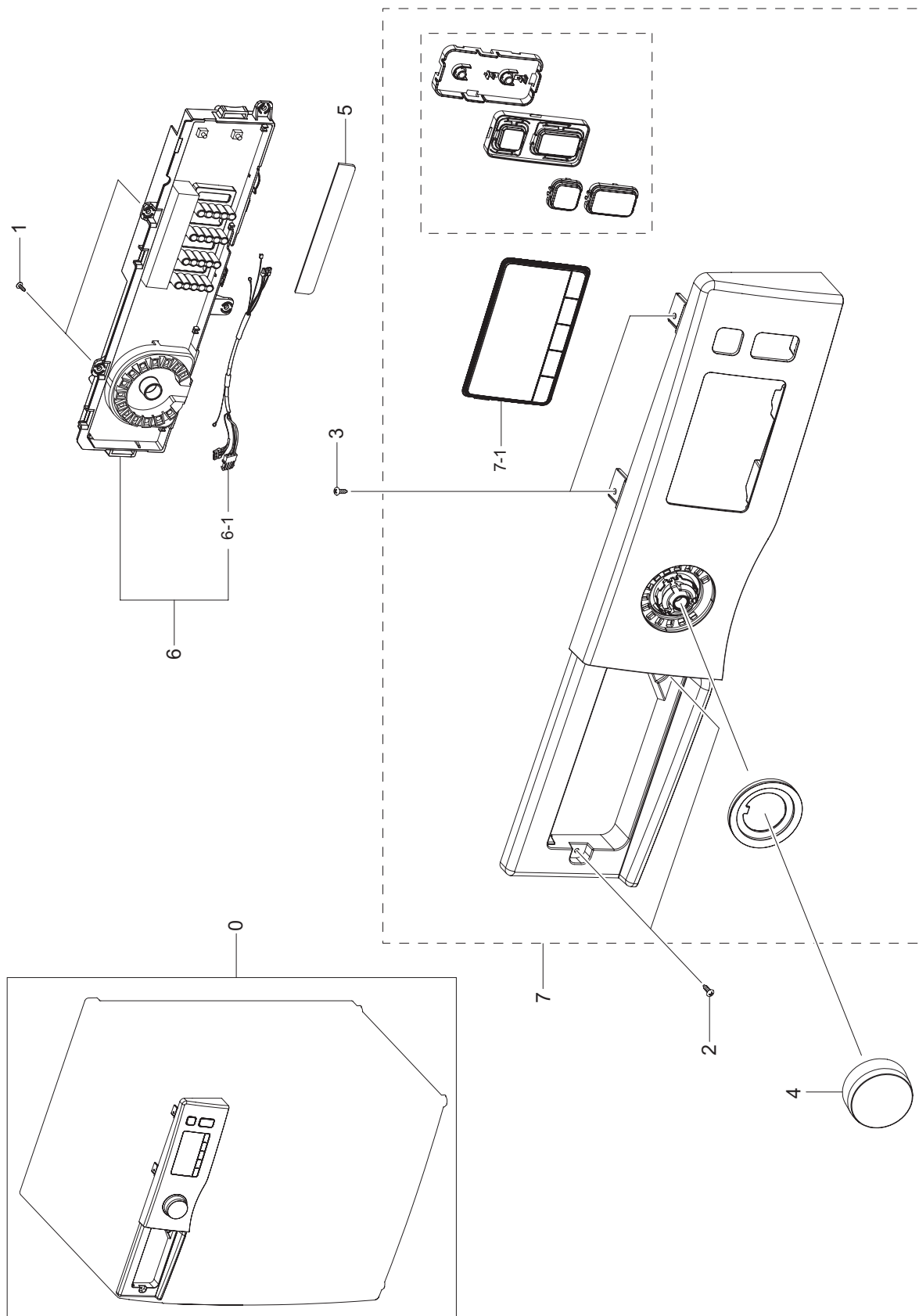
This exploded view diagram illustrates the assembly of a mechanical component, likely a pump or motor housing. The diagram is organized into three main sections, labeled 0, 1, and 2, which represent different sub-assemblies or stages of the assembly process.

**Section 0 (Top Left):** Shows the main housing assembly. Key components include the housing (0), a cover plate (3-6), and various fasteners (3-6-1, 3-6-2, 3-6-3, 3-6-4, 3-6-5, 3-6-6, 3-6-7, 3-6-8, 3-6-9, 3-6-10, 3-6-11, 3-6-12, 3-6-13, 3-6-14, 3-6-15, 3-6-16, 3-6-17, 3-6-18, 3-6-19, 3-6-20, 3-6-21, 3-6-22, 3-6-23, 3-6-24, 3-6-25, 3-6-26, 3-6-27, 3-6-28, 3-6-29, 3-6-30, 3-6-31, 3-6-32, 3-6-33, 3-6-34, 3-6-35, 3-6-36, 3-6-37, 3-6-38, 3-6-39, 3-6-40, 3-6-41, 3-6-42, 3-6-43, 3-6-44, 3-6-45, 3-6-46, 3-6-47, 3-6-48, 3-6-49, 3-6-50, 3-6-51, 3-6-52, 3-6-53, 3-6-54, 3-6-55, 3-6-56, 3-6-57, 3-6-58, 3-6-59, 3-6-60, 3-6-61, 3-6-62, 3-6-63, 3-6-64, 3-6-65, 3-6-66, 3-6-67, 3-6-68, 3-6-69, 3-6-70, 3-6-71, 3-6-72, 3-6-73, 3-6-74, 3-6-75, 3-6-76, 3-6-77, 3-6-78, 3-6-79, 3-6-80, 3-6-81, 3-6-82, 3-6-83, 3-6-84, 3-6-85, 3-6-86, 3-6-87, 3-6-88, 3-6-89, 3-6-90, 3-6-91, 3-6-92, 3-6-93, 3-6-94, 3-6-95, 3-6-96, 3-6-97, 3-6-98, 3-6-99, 3-6-100, 3-6-101, 3-6-102, 3-6-103, 3-6-104, 3-6-105, 3-6-106, 3-6-107, 3-6-108, 3-6-109, 3-6-110, 3-6-111, 3-6-112, 3-6-113, 3-6-114, 3-6-115, 3-6-116, 3-6-117, 3-6-118, 3-6-119, 3-6-120, 3-6-121, 3-6-122, 3-6-123, 3-6-124, 3-6-125, 3-6-126, 3-6-127, 3-6-128, 3-6-129, 3-6-130, 3-6-131, 3-6-132, 3-6-133, 3-6-134, 3-6-135, 3-6-136, 3-6-137, 3-6-138, 3-6-139, 3-6-140, 3-6-141, 3-6-142, 3-6-143, 3-6-144, 3-6-145, 3-6-146, 3-6-147, 3-6-148, 3-6-149, 3-6-150, 3-6-151, 3-6-152, 3-6-153, 3-6-154, 3-6-155, 3-6-156, 3-6-157, 3-6-158, 3-6-159, 3-6-160, 3-6-161, 3-6-162, 3-6-163, 3-6-164, 3-6-165, 3-6-166, 3-6-167, 3-6-168, 3-6-169, 3-6-170, 3-6-171, 3-6-172, 3-6-173, 3-6-174, 3-6-175, 3-6-176, 3-6-177, 3-6-178, 3-6-179, 3-6-180, 3-6-181, 3-6-182, 3-6-183, 3-6-184, 3-6-185, 3-6-186, 3-6-187, 3-6-188, 3-6-189, 3-6-190, 3-6-191, 3-6-192, 3-6-193, 3-6-194, 3-6-195, 3-6-196, 3-6-197, 3-6-198, 3-6-199, 3-6-200, 3-6-201, 3-6-202, 3-6-203, 3-6-204, 3-6-205, 3-6-206, 3-6-207, 3-6-208, 3-6-209, 3-6-210, 3-6-211, 3-6-212, 3-6-213, 3-6-214, 3-6-215, 3-6-216, 3-6-217, 3-6-218, 3-6-219, 3-6-220, 3-6-221, 3-6-222, 3-6-223, 3-6-224, 3-6-225, 3-6-226, 3-6-227, 3-6-228, 3-6-229, 3-6-230, 3-6-231, 3-6-232, 3-6-233, 3-6-234, 3-6-235, 3-6-236, 3-6-237, 3-6-238, 3-6-239, 3-6-240, 3-6-241, 3-6-242, 3-6-243, 3-6-244, 3-6-245, 3-6-246, 3-6-247, 3-6-248, 3-6-249, 3-6-250, 3-6-251, 3-6-252, 3-6-253, 3-6-254, 3-6-255, 3-6-256, 3-6-257, 3-6-258, 3-6-259, 3-6-260, 3-6-261, 3-6-262, 3-6-263, 3-6-264, 3-6-265, 3-6-266, 3-6-267, 3-6-268, 3-6-269, 3-6-270, 3-6-271, 3-6-272, 3-6-273, 3-6-274, 3-6-275, 3-6-276, 3-6-277, 3-6-278, 3-6-279, 3-6-280, 3-6-281, 3-6-282, 3-6-283, 3-6-284, 3-6-285, 3-6-286, 3-6-287, 3-6-288, 3-6-289, 3-6-290, 3-6-291, 3-6-292, 3-6-293, 3-6-294, 3-6-295, 3-6-296, 3-6-297, 3-6-298, 3-6-299, 3-6-300, 3-6-301, 3-6-302, 3-6-303, 3-6-304, 3-6-305, 3-6-306, 3-6-307, 3-6-308, 3-6-309, 3-6-310, 3-6-311, 3-6-312, 3-6-313, 3-6-314, 3-6-315, 3-6-316, 3-6-317, 3-6-318, 3-6-319, 3-6-320, 3-6-321, 3-6-322, 3-6-323, 3-6-324, 3-6-325, 3-6-326, 3-6-327, 3-6-328, 3-6-329, 3-6-330, 3-6-331, 3-6-332, 3-6-333, 3-6-334, 3-6-335, 3-6-336, 3-6-337, 3-6-338, 3-6-339, 3-6-340, 3-6-341, 3-6-342, 3-6-343, 3-6-344, 3-6-345, 3-6-346, 3-6-347, 3-6-348, 3-6-349, 3-6-350, 3-6-351, 3-6-352, 3-6-353, 3-6-354, 3-6-355, 3-6-356, 3-6-357, 3-6-358, 3-6-359, 3-6-360, 3-6-361, 3-6-362, 3-6-363, 3-6-364, 3-6-365, 3-6-366, 3-6-367, 3-6-368, 3-6-369, 3-6-370, 3-6-371, 3-6-372, 3-6-373, 3-6-374, 3-6-375, 3-6-376, 3-6-377, 3-6-378, 3-6-379, 3-6-380, 3-6-381, 3-6-382, 3-6-383, 3-6-384, 3-6-385, 3-6-386, 3-6-387, 3-6-388, 3-6-389, 3-6-390, 3-6-391, 3-6-392, 3-6-393, 3-6-394, 3-6-395, 3-6-396, 3-6-397, 3-6-398, 3-6-399, 3-6-400, 3-6-401, 3-6-402, 3-6-403, 3-6-404, 3-6-405, 3-6-406, 3-6-407, 3-6-408, 3-6-409, 3-6-410, 3-6-411, 3-6-412, 3-6-413, 3-6-414, 3-6-415, 3-6-416, 3-6-417, 3-6-418, 3-6-419, 3-6-420, 3-6-421, 3-6-422, 3-6-423, 3-6-424, 3-6-425, 3-6-426, 3-6-427, 3-6-428, 3-6-429, 3-6-430, 3-6-431, 3-6-432, 3-6-433, 3-6-434, 3-6-435, 3-6-436, 3-6-437, 3-6-438, 3-6-439, 3-6-440, 3-6-441, 3-6-442, 3-6-443, 3-6-444, 3-6-445, 3-6-446, 3-6-447, 3-6-448, 3-6-449, 3-6-450, 3-6-451, 3-6-452, 3-6-453, 3-6-454

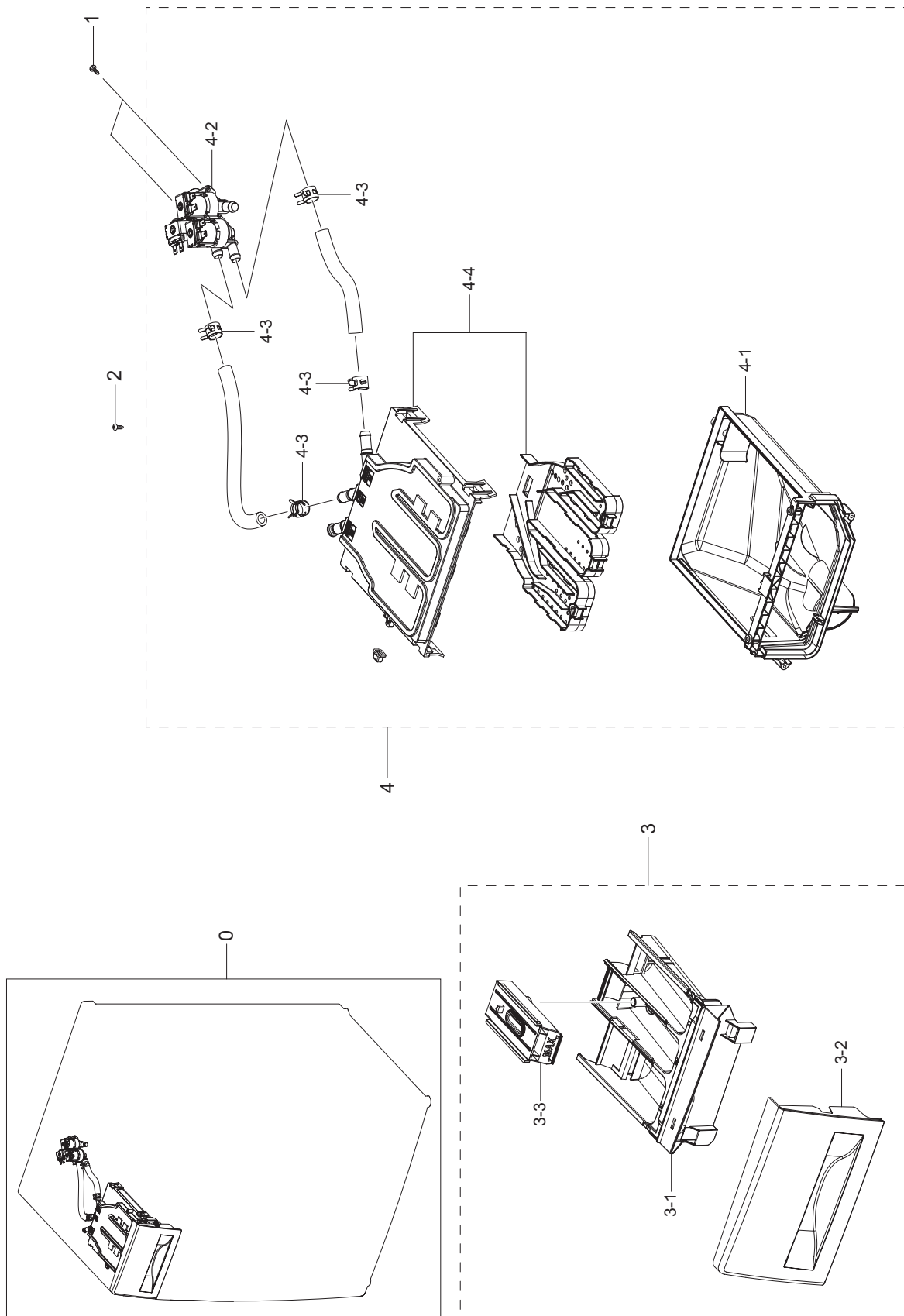
#### 4. ASSY FRAME PARTS (WD90TA046BX/EU)



## 5. ASSY PANEL CONTROL PARTS (WD90TA046BX/EU)



## 6.ASSY DRAWER PARTS (WD90TA046BX/EU)



---

## 8. ASSY DUCT SCROLL (WD90TA046BX/EU)

