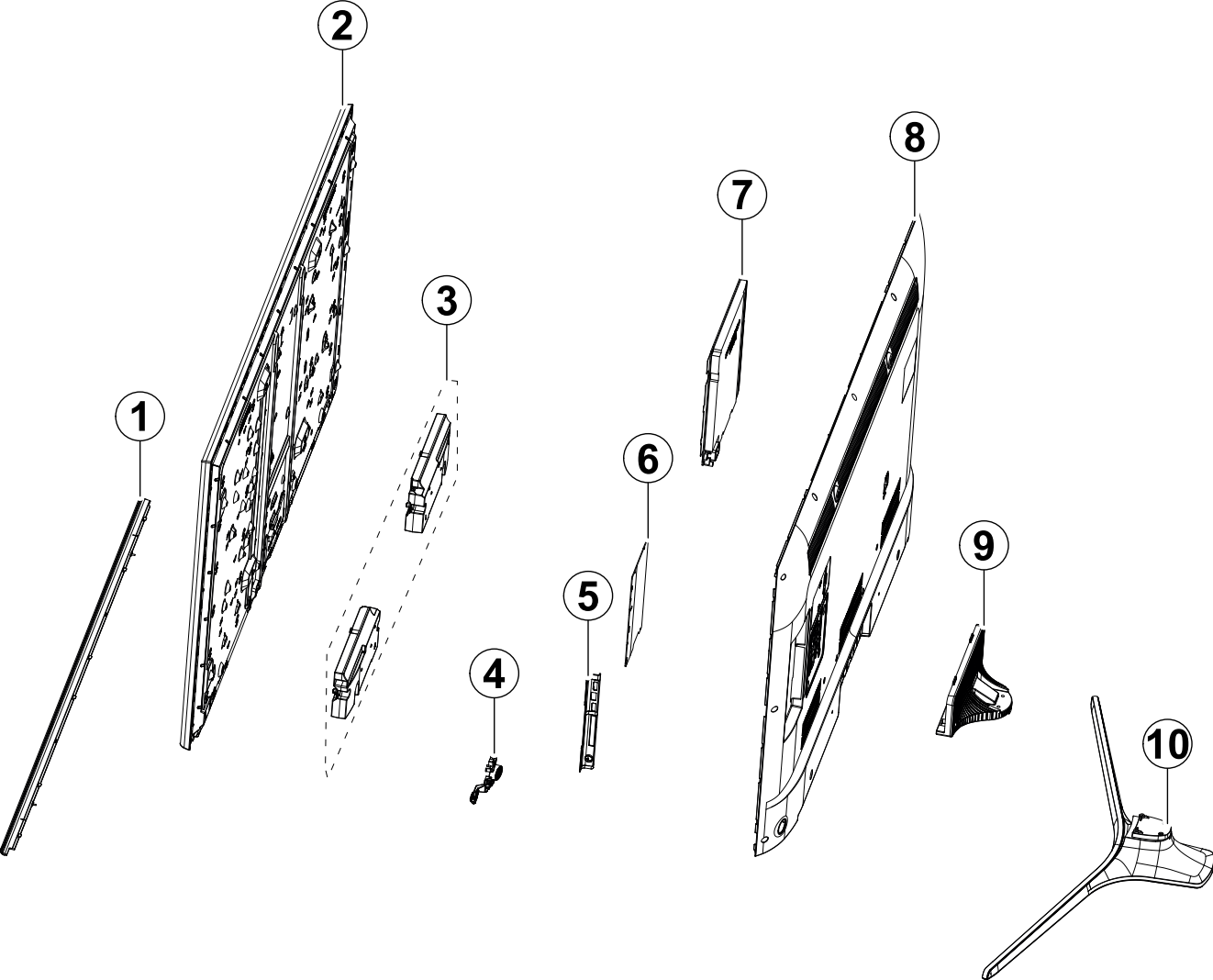


1. Exploded View & Part List

Exploded View



Parts List

No.	Lvl.	Loc.	Material Code	Description & Specification	SNA	Qty.
1	2	CD01A	BN95-01394A	ASSY DECORATION SMT; 5000,50,LIGHT TITAN	SA	1
2	2	PANEL	BN07-01359A	LCD-PANEL; GH050BGA-B1,BHGBBA1,8bit,50,16	SA	1
3	2	SP01A	BN96-30334A	ASSY SPEAKER P; 6ohm,10W,Enclosure_H5k	SA	1
4	2	FB01A	BN96-30902B	ASSY BOARD P-FUNCTION; UH5000,Function As	SA	1
5	3		BN61-09059A	HOLDER-SIDE AV; UF6100,HIPS,BK0020,HB,EO/	SNA	1
6	2	M0014	BN94-08116H	ASSY PCB MAIN; UH5C	SA	1
7	2	P001A	BN44-00704A	DC VSS-LED TV PD BD; L55S1_EHS,L55S1_EHS,	SC	1
8	2	R001A	BN96-30582A	ASSY COVER P-REAR; H5000 50,EO,PC+ABS,V1,	SA	1
9	2	SG01A	BN96-35223A	ASSY GUIDE P-STAND; J5500 40",PC+GF20%,V2	SA	1
10	2	SB04A	BN96-35225B	ASSY STAND P-BASE; J5500 48",PC+ABS+GF20	SA	1

2. Electrical Parts List

Level	Loc.	Part Code	Description & Specification	Qty.	SA/SNA
			UE50J5100AWXXH (DH01)		
1		BN90-05474F	ASSY W/I;UH5000	1	SNA
.2		BN81-08159Z	PART SET-ELEC W/I;UF**,UH**,UG**,ELEC	1	SNA
.2		BN81-08368E	PART SET-MECH W/I;UH5C,U50HC*	1	SNA
1	R001A	BN90-06537Q	ASSY COVER REAR;UJ5000,50"	1	SNA
.2	SCREW	6001-003074	SCREW-MACHINE;BH,+,M3,L6,ZPC(BLK),SWRCH1	18	SA
.2	SCREW	6003-001782	SCREW-TAPTYPE;BH,+,B,M4,L12,ZPC(BLK),SWR	2	SA
.2	R001A	BN96-30582A	ASSY COVER P-REAR;H5000 50,EO,PC+ABS,V1,	1	SA
..3	R001	BN63-11621A	COVER-REAR;UH5000 50",PC+ABS,V1,BLK,EO	1	SNA
..3		BN68-05650C	LABEL-TERMINAL SIDE;UH5K,PET,T0.125,W14.	1	SNA
1	S001A	BN90-06671B	ASSY STAND;UJ5000,50"	1	SNA
.2	SG01A	BN96-35223A	ASSY GUIDE P-STAND;J5500 40",PC+GF20%,V2	1	SA
..3	SG03	BN61-11465A	GUIDE-STAND;J5100/5500 40",PC+GF20%,V2	1	SA
...4		0103-007285	RESIN PC;HF3200H,K21294,BK0007,V2	1.5mm	330
..3		BN96-32380B	ASSY ACCESSORY-SCREW;BN69-10588A,BN61-09	2	SNA
...4	HOLDER	BN61-09494D	HOLDER-BOLT;BH+,SWRCH18A,L14,M4,B TYPE	8	SA
...4		BN69-10588A	BAG SCREW;LDPE,-,0.05,70,90,TRP,-,-,LED	2	SNA
.2	SB04A	BN96-35225B	ASSY STAND P-BASE;J5500 48",PC+ABS+GF20	1	SA
..3		0203-001499	TAPE-OPP;T0.04,W15,,TRP	0	SNA
..3	SCREW	6003-001001	SCREW-TAPTYPE;FH,+,-,B,M3,L8,ZPC(BLK),SW	2	SA
..3	HOLDER	BN61-09494D	HOLDER-BOLT;BH+,SWRCH18A,L14,M4,B TYPE	2	SA
..3		BN61-11431A	BRACKET-STAND BAR;Y15 F-LED J5100/5500 4	1	SNA
..3	AS080	BN63-04755L	SHEET-COVER;22LC350,PE,T0.05,W130mm,200M	1	SNA
..3		BN63-13259A	COVER-STAND BASE;Y15 F-LED J5100/5500 48	1	SNA
...4		0103-009946	RESIN PC ABS;HM-1200,BLACK,BK0007,V1	410	SNA
...4		BN68-00513D	LABEL-RESIN;resin,-,art paper,-,10,25,-,	1	SNA
..3		BN63-13263B	COVER-DECORATION STAND;J5100/5300 48",AB	1	SNA
...4		0103-005041	RESIN PC ABS;FR3200TV,901408,BK0008,1.2m	90	SNA
..3		BN67-00327M	RUBBER-FOOT;STAND,SILICON,10*10,T1.5,GRA	2	SNA
..3		BN67-00398P	RUBBER-FOOT;RUBBER,SILICONE,15.5*8,2.5,G	5	SNA
..3		BN68-05603A	LABEL-E,PASS;ALL MODEL,ART PAPER 90G,60,	1	SNA
1		BN91-12300A	ASSY LCD;BN07-01359A	1	SNA
.2	PANEL	BN07-01359A	LCD-PANEL;GH050BGA-B1,BHGBBA1,8bit,50,16	1	SA
..3	TCON	BN96-30390A	ASSY T CON P;T500HVN09.0,10bit,50 inch,F	1	SNA
1	M0017	BN91-13225H	ASSY CHASSIS;UH5C	1	SNA
.2	M0014	BN94-08116H	ASSY PCB MAIN;UH5C	1	SA
..3		BN61-09059A	HOLDER-SIDE AV;UF6100,HIPS,BK0020,HB,EO/	1	SNA
...4		0103-004628	RESIN HIPS;HF-1690H,K2901,BK0020,1.5mm H	13	SNA

Exploded Views and Parts List

Level	Loc.	Part Code	Description & Specification	Qty.	SA/SNA
...3		BN67-00364C	RUBBER-FOOT;X13,RUBBER,10*10,6,Gray,SQUA	1	SNA
...3	FB01A	BN97-07120D	ASSY DRM-KEY;NT14L_DRM-KEY(CI+)	1	SNA
...4		BN46-00328B	KEY CODE-CERTIFI;CI+,TV,NT14, EU	1	SNA
...3		BN97-07960B	ASSY SMD-MAIN;UH5C	1	SNA
...4		0202-001899	SOLDER-CREAM;M705-GRN360-K2-VT,20-38um,S	3	SNA
...4	DS01A	0401-001056	DIODE-SWITCHING;MMBD4148SE,100V,200mA,SO	1	SA
...4	DS01A	0401-001116	DIODE-SWITCHING;BAV99DW,75V,215mA,SOT-36	2	SA
...4		0403-001552	DIODE-ZENER;DDZ16,15.69/16.51V,500mW,SOD	1	SA
...4		0403-001783	DIODE-ZENER;BZB84-C6V2,5.8/6.6V,300mW,SO	5	SNA
...4		0403-001784	DIODE-ZENER;NZH7V5C,7.29/7.67V,500mW,SOD	1	SNA
...4		0403-001785	DIODE-ZENER;NZH5V1B,4.94/5.2V,500mW,SOD-	1	SA
...4		0403-001797	DIODE-ZENER;NZH3V0B,2.85/3.15V,500mW,SOD	1	SNA
...4		0404-001404	DIODE-SCHOTTKY;BAT721C,40V,200mA,SOT-23,	2	SA
...4		0406-001200	DIODE-TVS;RCLAMP0504F,6/-V,150W,SC-70	1	SA
...4		0406-001628	DIODE-TVS;AOZ8804ADI,6/-V,150W,SLP2510	4	SA
...4		0501-000279	TR-SMALL SIGNAL;KSA1182-Y,PNP,150mW,SOT-	1	SA
...4		0501-000445	TR-SMALL SIGNAL;KTC3875S-Y,NPN,150mW,SOT	6	SC
...4		0505-002560	FET-SILICON;AO6415,P,-20V,-3.3A,0.15ohm,	3	SA
...4		0505-003397	FET-SILICON;2N7002K,N,60V,380mA,1.19ohm,	6	SA
...4		0801-002780	IC-CMOS LOGIC;74LVC1G17,SCHMITT-TRIGGER	2	SA
...4		0801-003330	IC-CMOS LOGIC;Octal buffer,DQFN,20P,4.5x	1	SA
...4		1001-001860	IC-ANALOG SWITCH;NX5L2750CGU,QFN,10P,1.4	1	SNA
...4		1103-001531	IC-EEPROM;S-24C256CI-J8T1U4,256Kbit,32Kx	1	SA
...4		1105-002527	IC-DDR3 SDRAM;K4B2G1646Q-BCK0,DDR3,2Gbit	1	SA
...4		1201-003183	IC-AUDIO AMP;DRV612,HTSSOP,14P,5x4.4mm,D	1	SA
...4		1201-003671	IC-AUDIO AMP;NTP7414,MLF,48P,7x7mm,DUAL,	1	SA
...4		1203-004363	IC-VOL. DETECTOR;SOT-23,3Z30,2.9x1.6mm,P	1	SA
...4		1203-006017	IC-VOL. DETECTOR;RT9824GJ8,TSOT23,8P,2.9	1	SA
...4		1203-006130	IC-POSI.FIXED REG.;S-1172B25-U5T1G,SOT-8	1	SA
...4		1203-007694	IC-DC/DC CONVERTER;SN1106041DDAR,DDA,8Z3	2	SA
...4		1203-007984	IC-DC/DC CONVERTER;AOZ3015PI,SO-8,8P,6.2	1	SA
...4		1203-008103	IC-POSI.FIXED REG.;S-13A1D15-E800,HSOP,8	1	SNA
...4		1203-008104	IC-POSI.FIXED REG.;S-13A1D18-E800,HSOP,8	1	SNA
...4		1203-008105	IC-POSI.FIXED REG.;S-13A1D33-E800,HSOP,8	1	SNA
...4		1204-003492	IC-DECODER;SENK14,LFBGA,624P,21x21mm,PLA	1	SA
...4		1205-004447	IC-SWITCH;TPS2051CDBVR,SOT23-5,5P,3x1.65	2	SA
...4		1405-001271	VARISTOR;35V,20Vdc,5A,1.0x0.5x0.6mm,TP,1	26	SA
...4		2007-000137	R-CHIP;2Kohm,5%,1/16W,TP,1005	5	SNA
...4		2007-000138	R-CHIP;100ohm,5%,1/16W,TP,1005	21	SA
...4		2007-000142	R-CHIP;2.7Kohm,5%,1/16W,TP,1005	3	SNA

Level	Loc.	Part Code	Description & Specification	Qty.	SA/SNA
...4		2007-000143	R-CHIP;4.7Kohm,5%,1/16W,TP,1005	42	SNA
...4		2007-000148	R-CHIP;10Kohm,5%,1/16W,TP,1005	34	SA
...4		2007-000153	R-CHIP;22Kohm,5%,1/16W,TP,1005	9	SNA
...4		2007-000157	R-CHIP;47Kohm,5%,1/16W,TP,1005	6	SNA
...4		2007-000162	R-CHIP;100Kohm,5%,1/16W,TP,1005	6	SNA
...4		2007-000168	R-CHIP;470Kohm,5%,1/16W,TP,1005	3	SNA
...4		2007-000171	R-CHIP;0ohm,5%,1/16W,TP,1005	5	SNA
...4		2007-000172	R-CHIP;10ohm,5%,1/16W,TP,1005	2	SNA
...4		2007-000173	R-CHIP;22ohm,5%,1/16W,TP,1005	10	SNA
...4		2007-000174	R-CHIP;47ohm,5%,1/16W,TP,1005	2	SNA
...4		2007-000256	R-CHIP;1.6Kohm,1%,1/10W,TP,1608	1	SA
...4		2007-000475	R-CHIP;1Mohm,1%,1/10W,TP,1608	1	SA
...4		2007-000691	R-CHIP;3.3Mohm,5%,1/10W,TP,1608	1	SA
...4		2007-000695	R-CHIP;3.3ohm,5%,1/10W,TP,1608	4	SNA
...4		2007-000775	R-CHIP;33Kohm,5%,1/16W,TP,1005	2	SNA
...4		2007-000931	R-CHIP;470ohm,5%,1/8W,TP,2012	1	SC
...4		2007-000932	R-CHIP;470ohm,5%,1/16W,TP,1005	7	SNA
...4		2007-001168	R-CHIP;75ohm,5%,1/4W,TP,3216	1	SA
...4		2007-001292	R-CHIP;33ohm,5%,1/16W,TP,1005	12	SNA
...4		2007-001298	R-CHIP;51ohm,5%,1/16W,TP,1005	2	SNA
...4		2007-001313	R-CHIP;330ohm,5%,1/16W,TP,1005	2	SNA
...4		2007-001325	R-CHIP;3.3Kohm,5%,1/16W,TP,1005	1	SNA
...4		2007-003025	R-CHIP;6.8ohm,5%,1/16W,TP,1005	2	SA
...4		2007-007095	R-CHIP;390ohm,5%,1/16W,TP,1005	1	SA
...4		2007-007107	R-CHIP;100Kohm,1%,1/16W,TP,1005	1	SNA
...4		2007-007108	R-CHIP;43.2Kohm,1%,1/16W,TP,1005	1	SA
...4		2007-007139	R-CHIP;47Kohm,1%,1/16W,TP,1005	1	SA
...4		2007-007142	R-CHIP;10Kohm,1%,1/16W,TP,1005	2	SNA
...4		2007-007156	R-CHIP;1ohm,5%,1/16W,TP,1005	15	SNA
...4		2007-007306	R-CHIP;100ohm,1%,1/16W,TP,1005	4	SNA
...4		2007-007309	R-CHIP;12Kohm,1%,1/16W,TP,1005,0.35T	1	SA
...4		2007-007311	R-CHIP;22Kohm,1%,1/16W,TP,1005	1	SA
...4		2007-007317	R-CHIP;2.2Kohm,1%,1/16W,TP,1005	2	SA
...4		2007-007318	R-CHIP;1Kohm,1%,1/16W,TP,1005	17	SNA
...4		2007-007517	R-CHIP;240ohm,1%,1/16W,TP,1005	1	SNA
...4		2007-007538	R-CHIP;56Kohm,1%,1/16W,TP,1005	1	SA
...4		2007-008015	R-CHIP;75ohm,1%,1/16W,TP,1005	10	SNA
...4		2007-008275	R-CHIP;30Kohm,1%,1/16W,TP,1005	1	SNA
...4		2007-008332	R-CHIP;11.5Kohm,1%,1/16W,TP,1005	2	SA
...4		2007-009138	R-CHIP;33Kohm,1%,1/16W,TP,1005	2	SNA

Exploded Views and Parts List

Level	Loc.	Part Code	Description & Specification	Qty.	SA/SNA
...4		2011-001261	R-NETWORK;33ohm,5%,1/16W,L,CHIP,8P,TP,2.	2	SA
...4		2011-001262	R-NETWORK;22ohm,5%,1/16W,L,CHIP,8P,TP,2.	2	SA
...4		2011-001344	R-NETWORK;100ohm,5%,1/16W,L,CHIP,8P,TP,2	6	SA
...4		2011-001345	R-NETWORK;10Kohm,5%,1/16W,L,CHIP,8P,TP,2	4	SA
...4		2011-001396	R-NETWORK;4.7Kohm,5%,1/16W,L,CHIP,8P,TP,	5	SA
...4		2011-001449	R-NETWORK;22ohm,5%,1/16W,L,4P,TP,1010	1	SA
...4		2011-001527	R-NETWORK;4.7Kohm,5%,1/16W,L,CHIP,4P,TP,	1	SNA
...4	AD480	2203-000233	C-CER,CHIP;0.1nF,5%,50V,C0G,TP,1005	9	SA
...4	AD480	2203-000278	C-CER,CHIP;0.01nF,0.5pF,50V,C0G,TP,1005	1	SA
...4	AD480	2203-000359	C-CER,CHIP;0.15nF,5%,50V,C0G,TP,1005,0.5	4	SNA
...4	AD480	2203-000438	C-CER,CHIP;1nF,10%,50V,X7R,TP,1005	7	SA
...4	AD480	2203-000489	C-CER,CHIP;2.2nF,10%,50V,X7R,TP,1005	1	SA
...4	AD480	2203-000585	C-CER,CHIP;0.22nF,10%,50V,X7R,TP,1005	1	SA
...4	AD480	2203-000627	C-CER,CHIP;0.022nF,5%,50V,C0G,TP,1005	2	SNA
...4	AD480	2203-000714	C-CER,CHIP;3.3nF,10%,50V,X7R,TP,1005	10	SA
...4	AD480	2203-000812	C-CER,CHIP;0.033nF,5%,50V,C0G,TP,1005	1	SA
...4	AD480	2203-000940	C-CER,CHIP;0.47nF,10%,50V,X7R,TP,1005	6	SA
...4	AD480	2203-000995	C-CER,CHIP;0.047nF,5%,50V,C0G,TP,1005	3	SA
...4	AD480	2203-001412	C-CER,CHIP;0.03nF,5%,50V,NP0,TP,1005	6	SNA
...4	AD480	2203-002285	C-CER,CHIP;10nF,10%,50V,X7R,TP,1005	12	SNA
...4	AD480	2203-002443	C-CER,CHIP;0.33nF,10%,50V,X7R,TP,1005	8	SA
...4	AD480	2203-005054	C-CER,CHIP;0.0047nF,0.25pF,50V,NP0,TP,10	2	SA
...4	AD480	2203-005249	C-CER,CHIP;100nF,10%,50V,X7R,TP,1608	13	SNA
...4	AD480	2203-005659	C-CER,CHIP;0.18nF,5%,50V,NP0,TP,1005	1	SNA
...4	AD480	2203-006048	C-CER,CHIP;100nF,10%,10V,X7R,TP,1005	87	SA
...4	AD480	2203-006126	C-CER,CHIP;47nF,10%,16V,X7R,TP,1005	12	SNA
...4	AD480	2203-006324	C-CER,CHIP;2200nF,10%,10V,X5R,TP,1608	5	SA
...4	AD480	2203-006348	C-CER,CHIP;1000nF,10%,25V,X5R,TP,1608,0.	4	SA
...4	AD480	2203-006361	C-CER,CHIP;10000nF,10%,10V,X5R,TP,2012	4	SC
...4	AD480	2203-006474	C-CER,CHIP;22000nF,20%,6.3V,X5R,TP,2012	14	SA
...4	AD480	2203-006562	C-CER,CHIP;1000nF,10%,10V,X5R,TP,1005	17	SNA
...4	AD480	2203-006636	C-CER,CHIP;220nF,10%,25V,X7R,TP,1608	2	SA
...4	AD480	2203-006890	C-CER,CHIP;10000nF,20%,6.3V,X5R,TP,1608	34	SNA
...4	AD480	2203-007176	C-CER,CHIP;10000nF,10%,16V,X5R,TP,2012,1	6	SNA
...4	AD480	2203-007240	C-CER,CHIP;22000nF,20%,6.3V,X5R,TP,1608(2	SA
...4	AD480	2203-007269	C-CER,CHIP;22000nF,20%,10V,X5R,TP,2012(2	4	SA
...4	AD480	2203-007270	C-CER,CHIP;10000nF,10%,10V,X5R,TP,1608,0	5	SNA
...4	AD480	2203-007306	C-CER,CHIP;10000nF,10%,25V,X5R,TP,2012,1	1	SNA
...4	AD480	2203-007544	C-CER,CHIP;100nF,10%,50V,X7R,TP,1005,0.5	2	SA
...4		2503-001051	C-NETWORK;100nFx4,20%,16V,2012	1	SA

Level	Loc.	Part Code	Description & Specification	Qty.	SA/SNA
...4		2703-000158	INDUCTOR-SMD;1uH,10%,2012,.40hm,50mA,45,	3	SA
...4		2703-000213	INDUCTOR-SMD;470nH,10%,1608,1.350hm,35mA	1	SA
...4		2703-001209	INDUCTOR-SMD;1.2uH,10%,1608,.80hm,25mA,3	3	SA
...4		2703-002332	INDUCTOR-SMD;330nH,5%,1608,30hm,100mA,32	1	SA
...4		2703-003149	INDUCTOR-SMD;2.2uH,20%,5050,0.0550hm,300	1	SA
...4		2703-003790	INDUCTOR-SMD;4.7uH,20%,8080,0.025ohm,450	1	SA
...4		2703-003930	INDUCTOR-SMD;4.7uH,20%,5050,0.0720hm,245	4	SA
...4		2703-004145	INDUCTOR-SMD;2.2uH,20%,6.5 x 6.9mm,0.20o	1	SNA
...4		2801-003773	CRYSTAL-SMD;12MHz,30ppm,28-AAN,20pF,50oh	1	SA
...4		3301-002039	BEAD-SMD;26ohm,1608,TP	45	SA
...4		3701-001861	CONNECTOR-HDMI;19P,FEMALE,AU,0.5mm,BLK,S	2	SA
...4		3707-001106	CONNECTOR-OPTICAL;STRAIGHT W/L,SPDIF	1	SA
...4		3708-003073	CONNECTOR-FPC/FFC/PIC;51P,0.5mm,SMD,AU,N	1	SA
...4		3709-001712	CONNECTOR-CARD SLOT;68P,1.27mm,ANGLE,AU,	1	SA
...4	EH01	3711-008131	HEADER-BOARD TO CABLE;BOX,4P,1R,2.5mm,AN	1	SA
...4	EH01	3711-008521	HEADER-BOARD TO CABLE;BOX,8P,1R,2mm,ANGL	1	SA
...4	EH01	3711-008634	HEADER-BOARD TO CABLE;BOX,10P,2R,2mm,ANG	1	SA
...4		3722-003457	JACK-USB;4P/1C,NI,BLK,A	1	SA
...4	JACK PIN	3722-003546	JACK-PIN;5P+Screw hole,NI+SN,G,Y/BLU/RED	1	SA
...4		3722-003655	JACK-SCART;21P,SN,BLK	1	SA
...4		3722-003667	JACK-PHONE;1P/7C,SN/NI,BLK,STRAIGHT,3.6P	1	SA
...4	ET01	BN40-00282A	TUNER;DTOS40EIH276A,DTOS40EIH276A,DVB-TC	1	SA
...4		BN41-02098B	PCB MAIN;1.2T,122*193.5,1	1	SNA
...4		BN97-07377F	ASSY MICOM-SUB;T-NT14LDEUS-1002,2014.02.	1	SNA
....5		1107-002226	IC-NOR FLASH;W25Q40CLSSIP,4Mbit,SOIC,8P,	1	SA
...4		BN97-07377H	ASSY MICOM;T-NT14LDEUC-XXXX,F59L1G81A-25	1	SNA
....5		1107-002252	IC-NAND FLASH;F59L1G81A-25TIG,1Gbit,128M	1	SA
....5		BN46-00371C	S/W-E-MANUAL;NT14L,EU2,XH	1	SNA
....5		BN46-00377A	S/W MICOM;T-NT14LDEUC-XXXX,2013.10.23	1	SNA
..3	T0066	BP62-00017A	HEAT SINK-ES,SP-50L2HX,A6063S,T2.0,26.2,	1	SNA
1		BN91-14286N	ASSY SHIELD;UJ5000,50"	1	SNA
..2	SCREW	6001-003081	SCREW-MACHINE;PWH,+,M3,L5,ZPC(WHT),SWRCH	8	SA
..2		BN02-00102B	TAPE-FILAMENT;#8917,0.15,25,50,WHITE	0	SNA
..2	M-F	BN39-01873H	LEAD CONNECTOR-FUNCTION;8p / 9p,Black,08	1	SA
..2	EC13	BN39-01884B	LEAD CONNECTOR;UN40H5200AF,Lead Connecto	1	SA
..2	EC13	BN39-01885N	LEAD CONNECTOR;DBD_55",Flat Connector*,U	1	SA
..2	P001A	BN44-00704A	DC VSS-LED TV PD BD;L55S1_EHS,L55S1_EHS,	1	SC
..2	CD01A	BN95-01394A	ASSY DECORATION SMT;5000,50,LIGHT TITAN	1	SA
..3		0203-001269	TAPE-OPP MASKING;#301,T0.06,W75,L50000,N	0	SNA
..3		0204-002420	SOLVENT;1M-1000,C3H70H,96	0	SNA

Exploded Views and Parts List

Level	Loc.	Part Code	Description & Specification	Qty.	SA/SNA
..3		BN01-00160A	TARGET-CHROMIUM-CY;Chromium target,99.95	0	SNA
..3		BN01-00161A	TARGET-CHROMIUM-PL;chromium target,over	0	SNA
..3		BN02-00353A	COATING-AFS;SSVD-39,2%,1~10 cps,1.78	3	SNA
..3	FD01	BN63-11612A	COVER-DECORATION;UH5000 50",PC+ABS+G/F15	1	SNA
...4		0103-010275	RESIN PC ABS;235GNH15/6919H,Black,BK0007	116	SNA
..3		BN63-13128M	SHEET-COVER;LED,PET,0.05,21,100,300g,ST-	1	SNA
..3		BN68-03920A	LABEL BOX;All Monitor,ART-PAPER 100G,WHT	1	SNA
..3		BN69-10522D	P/TRAY;-,-,305,501,160,PAPER,-,-,-,TRAY 48	1	SNA
..3		BN69-10523E	BOX UNIT-SMT;48"-50" SMT DECORATION,PAPE	1	SNA
.2	SP01A	BN96-30334A	ASSY SPEAKER P;6ohm,10W,Enclosure_H5k	1	SA
.2	FB01A	BN96-30902B	ASSY BOARD P-FUNCTION;UH5000,Function As	1	SA
.2	FL06	BN96-31530R	ASSY CABLE P-FFC;NT14L 50H5000,LVDS CABL	1	SA
1		BN92-16881G	ASSY LABEL;UH5C	1	SNA
.2		0203-001598	TAPE-FILAMENT;#8915,0.15,12,55000,CLR	0	SNA
.2		BN68-06708D	LABEL RATING;ALL,SS,PP,T0.05,93,73,Silve	1	SNA
.2		BN68-07035Y	LEAFLET-QSG;UJ5100/UJ5120/UJ5105,32"40"	1	SNA
1		BN92-17092W	ASSY BOX;UJ5000,50"	1	SNA
.2		BH68-00662A	LABEL BOX-01;ALL MODEL,ART PAPER,60,110,	1	SNA
.2		BN68-05640A	LABEL-03,BOX;ALL MODEL,ART PAPER 90G,110	1	SNA
.2		BN69-12413B	BOX UNIT;50J5100-VS,CB,A-01,DW3,W1347,D1	1	SNA
1		BN92-17099F	ASSY P/MATERIAL;UJ5000,50"	1	SNA
.2		6902-001957	BAG ROLL;HDPE/PE FOAM,HDPE T0.018mm,T0.2	3	SNA
.2		6902-002233	BAG AIR;LDPE,-,T0.2,W900,L1850,TRP,-,-,-	1	SNA
.2		6922-000003	BAND;PP,T0.8,W18,L1650M,TRP,DA69-90145A	0	SNA
.2		BN02-00319B	TAPE OPP;OPP,T0.05,W75,L800m,CLEAR	3	SNA
.2		BN68-02422B	LABEL-WARNING SHIPPING;ALL MODEL,A/P,T0.	1	SNA
.2		BN69-03982L	PAD PACKING-EDGE;EDGE,PAPER,-,T5,W100,L2	1	SNA
.2		BN69-05418N	WRAP;T0.017,750,2000000,2000000,750	0	SNA
.2		BN69-06640B	PAD;PAD,PAPER,-,CB-SW4,910,1290,-,-,-,-,	1	SNA
.2		BN69-06640E	PAD-TRUCK PAD;TRUCK PAD,PAPER,-,DW-BC,41	1	SNA
.2		BN69-11261A	CUSHION-FRONT;50"/55" Model,EPS,16.7g/l	1	SNA
.2		BN69-12145T	PALLET;UE50J5500,WOOD,-,1180,1360,141,-,	1	SNA
.2		BN69-12421A	CUSHION SET;50J5000-VS,EPS,16.7g/L	1	SNA
..3		0103-005099	RESIN EPS;BASF303,Natural,Natural	496	SNA
1	ACCE1	BN92-18220V	ASSY ACCESSORY;UJ4*	1	SNA
.2		BN68-05417A	LABEL-02,ENERGY;ALL,EDC,PP,T0.135,60,125	1	SNA
.2		BN96-36891U	ASSY ACCESSORY MANUAL;J4*	1	SNA
..3		6902-001964	BAG PE;LDPE,BIOBASED,T0.03,W200,L300,TRP	1	SNA
..3		BN68-03548J	LEAFLET-08,WARRANTY CARD;comm,Samsung,17	1	SNA
..3		BN68-04972A	MANUAL FLYER-09,REGULATORY GUI;ALL,SAMSU	1	SNA

Level	Loc.	Part Code	Description & Specification	Qty.	SA/SNA
..3		BN68-05730D	LEAFLET-FICHE CARD;NT14L REFRSH,EUROPE,M	1	SNA
..3		BN68-06489W	MANUAL USERS;J5100 J4100,XH,ENG/POL/SLV/	1	SNA
.2		BN96-36896B	ASSY ACCESSORY CABLE;J4*	1	SNA
..3	T0268	3903-000849	CBF-POWER CORD;DT,CEE,LP-21L,250V,2.5A,B	1	SC
..3		4301-000121	BATTERY-MN;1.5V,R03,10.5x44.5m,7.5g,AAA	2	SNA
..3		6902-001965	BAG PE;LDPE,BIOBASED,T0.05,W200,L300,TRP	1	SNA
..3	REMO2	AA59-00741A	REMOCON;TM1240,44,3.0V,F5020/EU	1	SA
..3	HOLDER	BN68-08370A	HOLDER-WIRE STAND;26UE4000 GUIDE STAND,P	1	SA
..3	T0527	BN68-00513A	LABEL-E,PASS;ALL MODEL,YUPO(110G),BLACK,	1	SNA