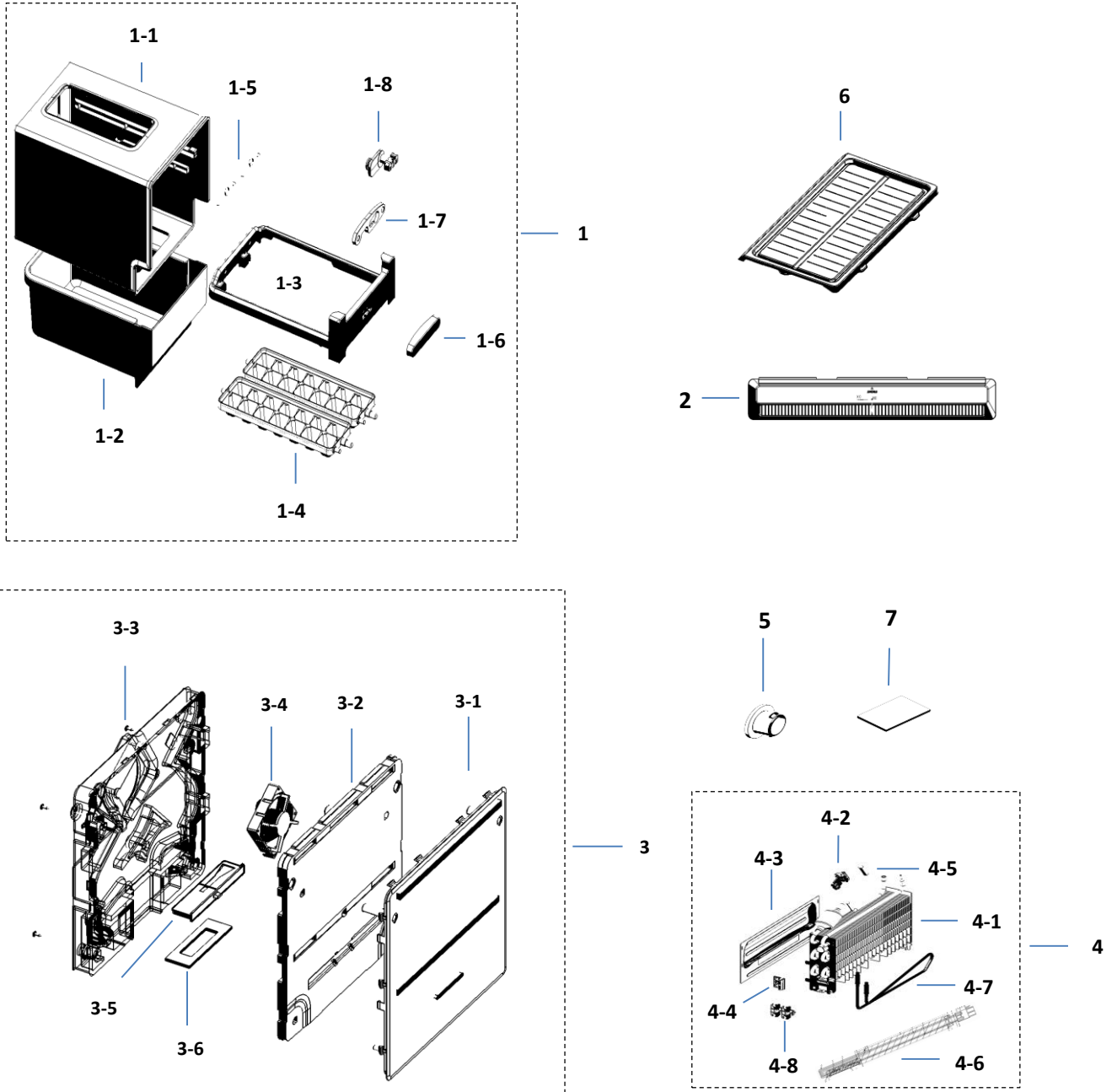


1. Freezer

Exploded View



Parts List

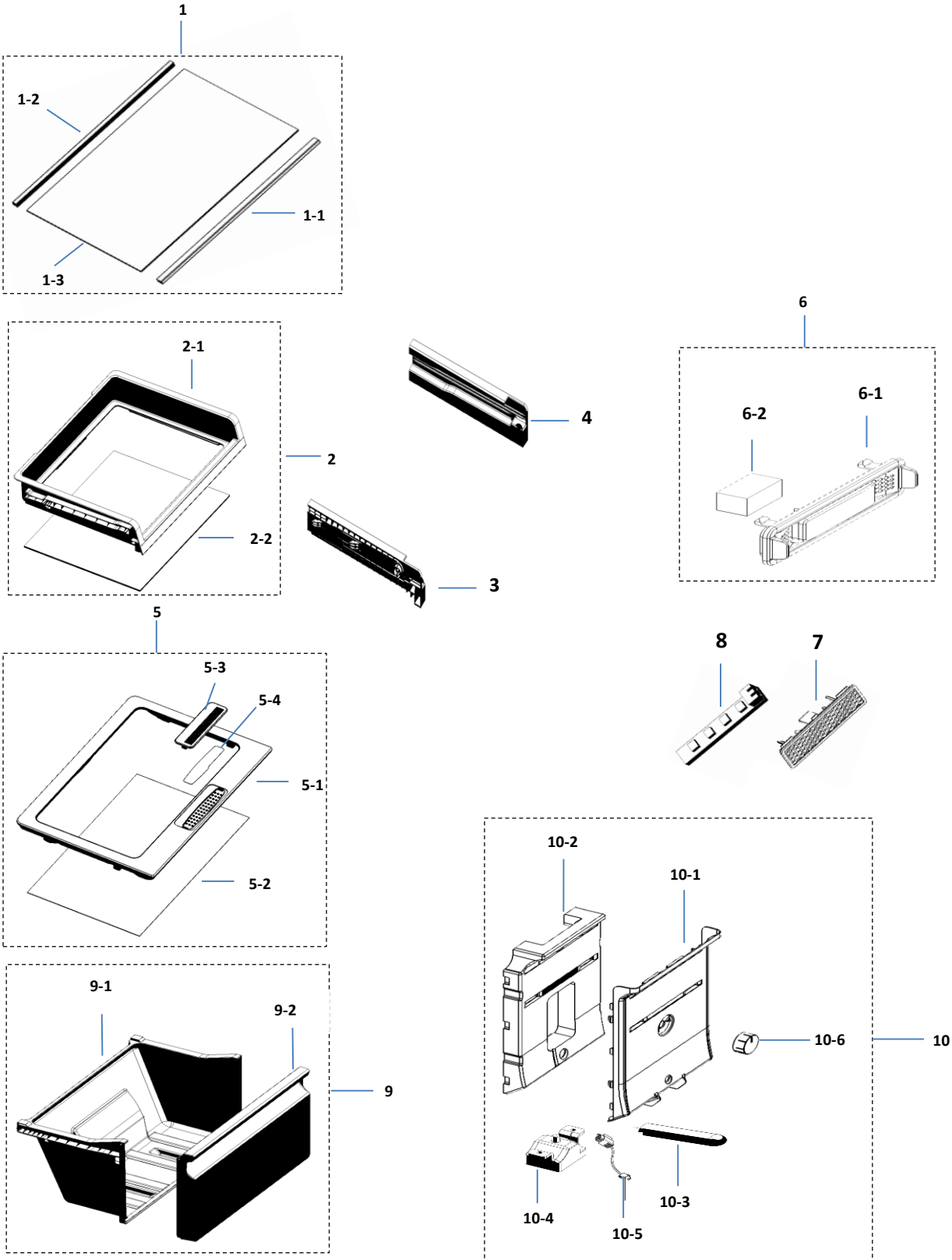
No.	Lvl.	Material Code	Description & Specification	SNA	Qty.
1	2	DA97-16152A	ASSY ICE MAKER; RT7000K	SNA	1
1-1	3	DA61-10831A	SUPPORT ICE MAKER; RT7000K,HIPS, S834S1, CO	SA	1
1-2	4	DA63-07331C	TRAY ICE-CUBE; RT5/6/7000K,RT4500, GPPS, HB	SA	1
1-3	4	DA61-08907A	CASE-TRAY ICE; RT38/35/32/29,2TWIST,PP,23	SA	1
1-4	4	DA63-07337A	TRAY ICE; 3050,TMF,PP,T1.0,-,COOL WHITE,1	SA	2
1-5	4	DA61-20136A	SPRING ETC-ICE MAKER; SR-53EA,STS304, COIL	SA	2
1-6	4	DA64-04461A	KNOB-TRAY ICE; 3050 TMF,ABS,2.0,COOL WHTIE	SA	1
1-7	4	DA66-01006A	LEVER-TRAY ICE; RT320,POM,NTR	SA	1
1-8	4	DA66-01003A	LEVER-TRAY ICE KNOB; 3050,TMF,PA66,NTR	SA	1
2	2	DA63-07332A	COVER-AIR FRE; RT32/29/25/22,PP,T1.5,COOL	SA	1
3	2	DA97-13525C	ASSY COVER EVAP FRE; 3050,RT32,25, Taiwanese	SA	1
3-1	3	DA63-07365C	COVER EVAP-FRE; 3050,PP,HB,COOL WHITE,RT32/29/25/22 Taiwanese	SNA	1
3-2	3	DA62-04045A	INSULATION-EVAP FRONT; 3050,PS FOAM, WHITE, TMF 220/250/290/320	SNA	1
3-3	3	DA62-04046A	INSULATION-REAR; 3050,EPS,WHITE,TMF 220/250/290/320	SNA	1
3-4	3	DA31-00287A	MOTOR BLDC FAN; 3350±7%,12V,0.16A,1.92W,-40°C~40°C	SA	1
3-5	3	DA64-04411A	KNOB-TEMP CONTROL; 3050,PP,COOL WHITE,TMF	SA	1
3-6	3	DA62-04132A	SEAL-INS EVAP LOW; PE OPEN CELL, WHITE,T5,dinking	SNA	1
4	2	DA96-01007B	ASSY EVAP-FRE; 3050-TMF,FIN TUBE,120V	SA	1
4-1	3	DA59-00553A	EVAP FRE; FIN TUBE,AL,3050-PJT	SNA	1
4-2	3	DA61-00603A	FIXER SENSOR; n-PJT,PP,T2,NATURAL,HB,BJ750	SA	1
4-3	3	DA61-09103B	PLATE EVAP-REAR; 3050PJT,GI-SGCC,-,T0.3	SNA	1
4-4	3	DA61-07411A	FIXER-FUSE; NW2,PP,NATURAL,BJ750	SA	1
4-5	3	DA32-00006D	SENSOR TEMP; PX-41C,502AT,DKST1329GW,EXPORT,-40~120,5V,F DEF-SENSOR,YELLOW,250mm	SA	1
4-6	3	DA47-00301D	THERMO FUSE-ASSY; AC250V,10A,109~110°C,S.O.D,ETC(WIRE)	SA	1
4-7	3	DA47-00460C	HEATER METAL SHEATH; AC120V,3050 TMF, 120ohm,120W,INCOLOY840,812mm,BIMETAL,35 965-9213,MG611532T,MgO	SA	1

Exploded Views and Parts List

4-8	3	DA61-07410A	FIXER-HEATER FRE; NW2,PP,NATURAL,BJ750	SA	2
5	2	DA67-30266K	CAP SCREW; A-TOP,PP,T1.5,HB,BJ750,COOL WHITE	SA	3
6	2	DA67-04177B	SHELF-FRE; RT20,GPPS,TP BLUE	SA	1
7	2	DA62-00960A	SEAL CUTT-RUBBER; RUBBER,BLACK,T3,W40,L70	SA	1

2. Fridge

Exploded View



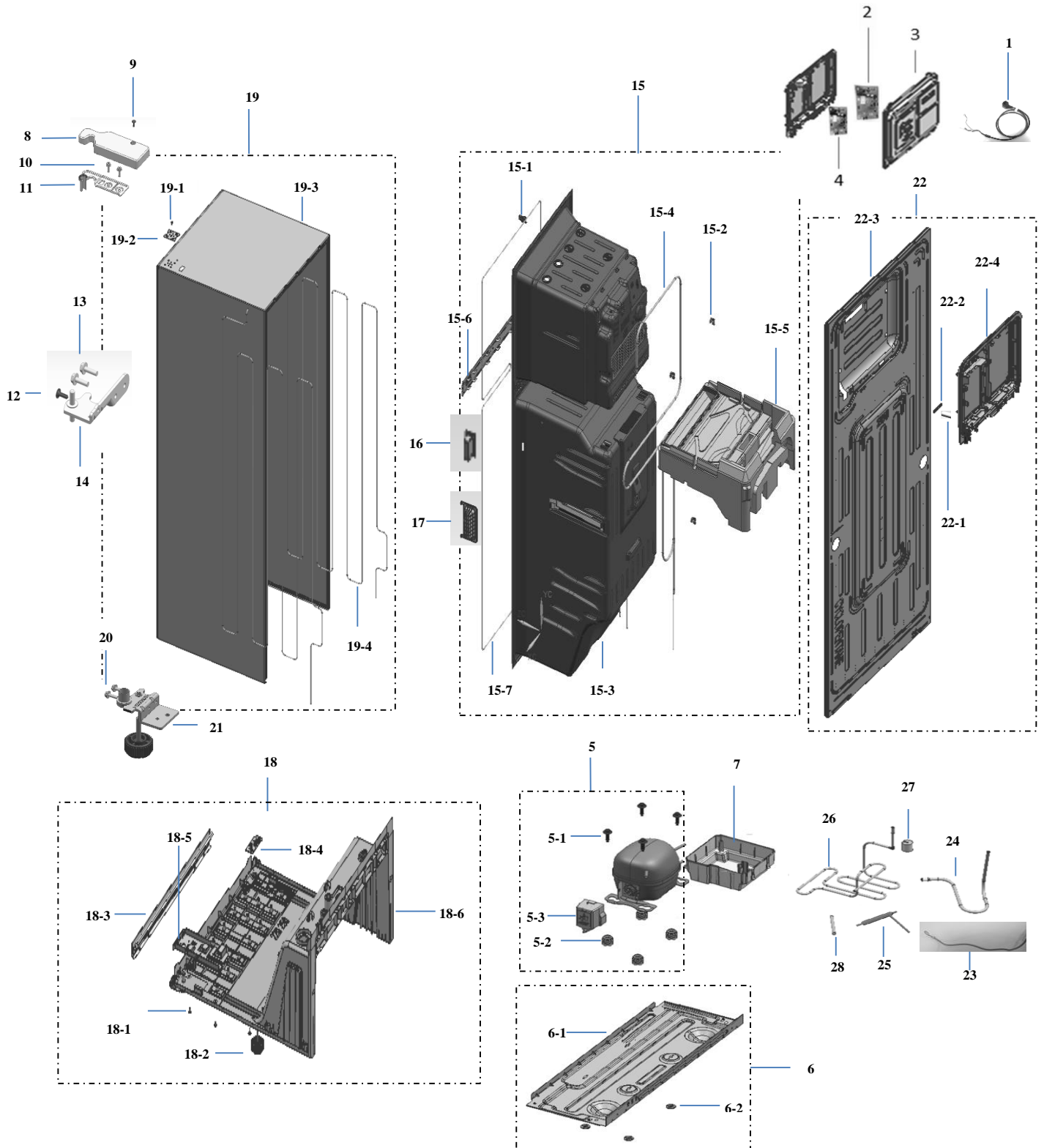
Parts List

No.	Lvl.	Material Code	Description & Specification	SNA	Qty.
1	2	DA97-13502Z	ASSY SHELF GLASS-REF; 3050,COOL WHITE TRIM	SA	2
1-1	3	DA64-04392C	TRIM SHELF-FRONT REF; RT25/22,HIPS,S834S1,COOL WHITE,URETHAN) TWO OF EXTRUSION(ABS+SOFT	SNA	1
1-2	3	DA64-04395Q	TRIM SHELF-REF REAR; RT22/25,HIPS,S834S1,COOL WHITE,Non-silicon	SA	1
1-3	3	DA67-03645C	GLASS-SHELF REF; RT250/220,TEMPERED GLASS,TRIM	SNA	1
2	2	DA97-13493B	ASSY SHELF SLIDE; 3050,250/220 WIHTOUT HOT-STAMPING	SA	1
2-1	3	DA67-03632A	SHELF-SLIDE OUT; 3050(RT250),HIPS,T2.5,COOL WHITE	SNA	1
2-2	3	DA67-03645F	GLASS-SHELF SLIDE; RT250/220,TEMPERED GLASS,ASSEMBLE	SNA	1
3	4	DA61-08968A	RAIL SHELF-SLIDE OUT L; 3050,HIPS,COOL WHITE,S834S1,HB	SNA	1
4	4	DA61-08967A	RAIL SHELF-SLIDE OUT R; 3050,HIPS,COOL WHITE,S834S1,HB	SNA	1
5	2	DA97-13637A	ASSY COVER-VEG; 3050(RT250)	SA	1
5-1	3	DA63-07372A	COVER VEG; 3050-RT250,HIPS,T2.5,COOL WHITE	SNA	1
5-2	3	DA67-03645J	GLASS-COVER VEG; 3.2,RT250/220,TEMPERED GLASS,ASSEMBLE,-,-	SNA	1
5-3	3	DA63-07341A	COVER-SHEET; 3050,HIPS,T2,HB,COOL WHITE,S834S1	SA	1
5-4	3	DA63-07442B	SHEET; LATOUR(MONTES ALPHA/POLARIS),PE,T0.2,NATURAL,GREEN, MOISTURE CONTROL	SA	1
6	2	DA97-13606A	ASSY COVER-DEODORIZER; 3050PJT	SA	1
6-1	3	DA63-07423A	COVER-DEODORIZER; 3050,PP,COOL WHITE	SA	1
6-2	3	DA02-00216B	CATALYST-DEODORIZER; T10,W15,L30,3050 TMF,2.2g,activated carbon	SA	1
7	2	DA63-07368A	COVER-LAMP; 3050,GPPS,T2.0,TP BLUE,G116HV	SA	1
8	2	DA41-00519R	ASSY LAMP LED; 3ea,CEM-1,65*10,WHITE,SMAW	SA	1
9	2	DA97-13491A	ASSY CASE-VEG LOW; 3050(RT250),T2.5,COOL	SA	1
9-1	3	DA61-08973A	CASE-VEG LOW; 3050(RT250),PP,COOL WHITE	SNA	1
9-2	4	DA63-07377A	COVER-VEG LOW FRONT; 3050(RT250),GPPS,-,H	SNA	1
10	3	DA97-18365C	ASSY COVER MULTI-REF; RT4500M,ICON	SA	1

10-1	3	DA63-07366J	COVER MULTI-REF; RT4500M,PP,HB,COOL WHITE,ICON	SA	1
10-2	3	DA62-05025A	INSULATION-MULTI REF; RT4500M,PS FOAM,NATURAL	SNA	1
10-3	3	DA32-10109Y	SENSOR TEMP; 502AT, DKST1329GW, PX-41C,A-TOP,- 40~120,5V,TPA APPLIED,BLUE,150mm	SC	1
10-4	3	DA41-00471B	ASSY MODULE; SUB PBA,MAX3,ROTARY S/W	SA	1
10-5	3	DA96-00391H	ASSY WIRE HARNESS-ROTARY; Rotary,ALL,12VDC,IEC, UL,UL,100mm*2,2,2,0	SA	1
10-6	3	DA64-04412A	KNOB-DIAL; 3050,HIPS,2.0,COOL WHITE,TMF	SA	1

3. Cabinet

Exploded View



Parts List

No.	Lvl.	Material Code	Description & Specification	SNA	Qty.
1	2	3903-000832	POWER CORD-AT; VCTF 2x0.75mm2, BLK, US2F,125V/15A,Fuse N,SCREW 1,2P Housing (W to W), L1650,L1500, 20/100/100/150, TWN, BSMI,Label Y	SA	1
2	1	DA92-00736B	ASSY PCB MAIN; GOOD,3050-PJT, 123*197, 110V,12V,5V,F-Fan BLDC, Rotary	SA	1
3	2	DA97-17093A	ASSY COVER PBA-MAIN; 3050-PJT,GI-SGCC, T0.45	SA	1
4	1	DA92-00459Q	ASSY PCB INVERTER; INVERTER,RT5000, 148*98.5mm,110V,16V,5V,A1	SA	1
5	2	NN34J9902APTT3	CMP,COMP,REFRIGERATOR,R-600A;	-	1
5-1	3	6011-004061	BOLT-HEX; M6,L43.6,SWRCH10A	SA	4
5-2	3	DA63-02617A	GROMMET COMP; USP05,EPDM, OD27.0, BLACK	SA	4
5-3	3	DA63-06122A	COVER RELAY; MSV,MPPO,T2,BLACK,V-0	SA	1
6	2	DA97-19191A	ASSY CHASSIS COMP; 3050-PJT,RT25,T0.8	SA	1
6-1	3	DA64-04409C	CHASSIS COMP; 3050 RT20/22/25,GI-SGCC, T0.8,-,-,-	SNA	1
6-2	3	DA71-50240B	BRACKET-CABI; TSE MODEL,GI-SGCC, T1.6	SNA	4
7	3	DA63-09097A	TRAY DRAIN-WATER; 3050 RT20/22/25, PP, BLACK	SNA	1
8	2	DA63-07349A	COVER-HINGE UPP; 3050PJ,PP,T1.5, HB, INOX GRAY, BJ750	SA	1
9	2	6002-000215	SCREW-TAPPING; TH,+,NO,1,M4,L16, ZPC(WHT),SWRCH18A	SNA	1
10	2	6011-001546	BOLT-HEX; M5(P0.8),L16,ZPC(WHT), SWRCH18A, IND Type C	SA	2
11	2	DA97-13613A	ASSY HINGE UPP; 3050PJ, T2.0, 320/290/250/220	SA	1
12	2	6002-001122	SCREW-TAPPING; FH,+,NO,1,M4,L14, ZPC(WHT), SWRCH18A	SC	1

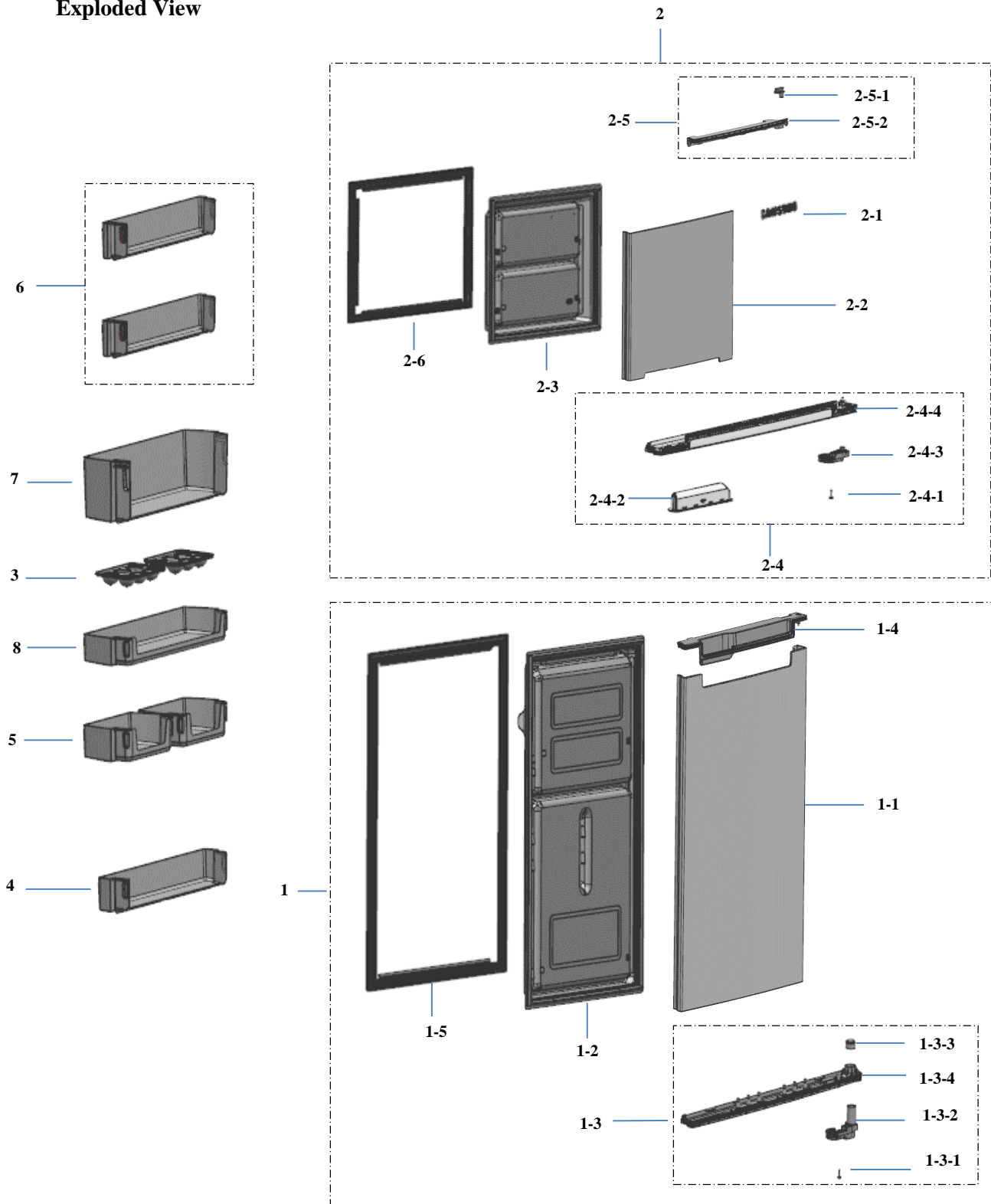
Exploded Views and Parts List

13	2	6011-001546	BOLT-HEX; M5(P0.8), L16,ZPC(WHT), SWRCH18A, IND Type C	SA	2
14	2	DA97-13614A	ASSY HINGE MID; 3050PJ, T3.2, 320/290/250/220	SA	1
15	2	DA94-01345W	ASSY LINER; RT250,TRAY,COOL WHITE	SNA	1
15-1	3	DA61-09096A	FIXER SHELF-FRE; 3050-TMF, HIPS,T1.5, COOL WHITE,S834S1	SNA	1
15-2	3	DA63-03634C	GROMMET-SCREW; 3050-PJT, PP+GF, NATURAL,15%	SNA	3
15-3	3	DA75-00306C	LINER; RT250,ABS,,,SV-0157,COOL WHITE, TRAY,0103-002463	SNA	1
15-4	3	DA97-13523J	ASSY PIPE SUCTION; 3050-PJT, TMF_250(VIETNAM)	SNA	1
15-5	3	DA97-13524A	ASSY INS-PARTITION MID; 3050PJT, 220/250 MODEL	SNA	1
15-6	3	DA97-13535A	ASSY CABINET-MID FRONT; 220, 250, SCP1,T0.8,3050	SNA	1
15-7	3	DA97-13572M	ASSY PIPE HOT; 3050,TMF250	SNA	1
16	2	DA34-10121C	SWITCH DOOR; AC125V/250V, 1.5/0.75, 1BUTTON, WHITE	SA	1
17	4	DA63-09017A	COVER SWITCH-DOOR; RT20/22/25, ABS+PC,T1,BLACK,BK0007,V-1,ED20%	SNA	1
18	2	DA97-13532E	ASSY CABI FRAME-BOTTOM; 3050-PJT ,PP,BLACK,250/220/200	SNA	1
18-1	3	6002-000213	SCREW-TAPPING; TH,+,1,M4,L12, ZPC(WHT), SWRCH18A	SNA	3
18-2	3	DA61-00805E	FOOT-FRONT; ARAM-PJT,PP,BLACK	SA	1
18-3	3	DA61-09018A	PLATE-BOTT FRONT; 250, 220,EGI-SECC, SNOW WHITE,WT9008,PCM2C	SNA	1
18-4	3	DA61-09092B	REINF HINGE-LOW LEFT; 3050,PO-SPHC,- ,T2.0	SNA	1
18-5	3	DA61-12160A	REINF HINGE-LOW RIGHT; 320,PO-SPHC, T2.3,3050	SNA	1
18-6	3	DA64-05097A	CABI FRAME-BOTTOM; 3050,PP, BLACK, 250/220/200	SNA	1

19	2	DA97-13640G	ASSY CABI FRAME; RT250,EGI-SECC, EMBO,URBAN SILVER,NO DISPLAY	SNA	1
19-1	3	DA60-90005A	FASTENER-RIVET; RR19,RR20, RR22, RR26, RT28,RT30,RT34,RT37,AI	SNA	1
19-2	3	DA61-09019B	REINF HINGE-UP; 3050 TMF,PO-SPHC,T1.6	SNA	1
19-3	3	DA64-04464Q	CABINET FRAME; RT250,NO DISPLAY,GI-SGCC,T0.35,URBAN SILVER, SV9008, PCMEM, EMBO	SNA	1
19-4	3	DA97-17087A	ASSY PIPE CLUSTER; 3050-PJT	SNA	1
20	2	6011-001546	BOLT-HEX; M5(P0.8),L16, ZPC(WHT), SWRCH18A, IND Type C	SA	3
21	2	DA97-14264A	ASSY HINGE-LOW; 3050PJ,320/290/250/220	SA	1
22	2	DA97-17086A	ASSY CABI FRAME-REAR; RT250,GI-SGCC, T0.25,EMBO	SNA	1
22-1	3	DA60-90005A	FASTENER-RIVET; RR19,RR20, RR22,RR26, RT28,RT30,RT34,RT37,AI	SNA	1
22-2	3	DA61-06985A	REINF-EARTH; TGV TEN,PO-SPHC,T1.6, ZPC3W	SNA	1
22-3	3	DA64-05093A	CABI FRAME-REAR; RT250,GI-SGCC, T0.25, EMBO	SNA	1
22-4	3	DA97-19043A	ASSY CASE PCB-PANEL; 3050,BLACK,3050	SNA	1
23	2	DA39-20389A	ASSY WIRE HARNESS-EARTH; EARTH, ALL,FREE VOLT,UL+IEC, UL,,,,, 300mm, 1,ST710489-3*2,,,,,,,,,,,,,	SA	1
24	2	DA62-04154B	PIPE CONNECT-SUCTION; 3050-PJT,Cu, OD6.35, T0.6,C1220T-0,L342	SA	1
25	2	DA62-04309C	DRYER; Cu,L118,SINGLE MOUTH,For Capi, OD15.8,6g	SA	1
26	2	DA62-05125A	PIPE IMMERSING; 3050-PJT(TMF250), TSW, OD4.2,T0.5,OD4.2, T0.5	SA	1
27	2	DA63-40171B	GROMMET-SUCT PIPE A; NBR,-,ID4,OD20	SC	1
28	2	DA73-00199B	PIPE-PIPE CONNECT; Cu,OD6.35,T0.6	SA	1

4. Door

Exploded View



Parts List

No.	Lvl.	Material Code	Description & Specification	SNA	Qty.
1	2	DA91-04771D	ASSY DOOR FOAM-REF; RT25,Light Doi Metal (S8),Recess handle	SA	1
1-1	3	DA61-09003Y	PLATE DOOR-REF; RT25,EGI-SECC,T0.4,LIGHT DOI METAL,SV9023,PETHP	SNA	1
1-2	3	DA64-04426B	PANEL-REF; 3050,RT25,ABS,HB,SV-0157,COOL WHITE	SNA	1
1-3	3	DA97-17077D	ASSY CAP DOOR-REF LOW; 3050-PJT,ABS,I BLACK	SNA	1
1-3-1	4	6002-000215	SCREW-TAPPING; TH,+,NO,1,M4,L16,ZPC(WHT),SWRCH18A	SNA	1
1-3-2	4	DA66-01009A	LEVER-AUTO CLOSE REF; 3050PJ,POM,K-300,NATURAL	SA	1
1-3-3	4	DA67-03691A	CAP AIR-GROMMET REF; 3050 PJT,LDPE,HB,MB9500,NATURAL	SNA	1
1-3-4	4	DA67-04271D	CAP DOOR-REF LOW; 3050PJT,ABS,CNTK A-204,BLACK,250/220/200	SNA	1
1-4	3	DA97-17078A	ASSY CAP DOOR-REF UP; 3050-PJT,ABS,I BLACK	SNA	1
1-5	2	DA94-03521A	ASSY DOOR-GASKET; RT25,Gray,REF	SA	1
2	2	DA91-04770F	ASSY DOOR FOAM; RT25,Light Doi Metal (S8),Recess handle,HLine	SA	1
2-1	3	DA64-04020A	MASCOT; ALL,Ni,L80	SA	1
2-2	3	DA61-09002X	PLATE DOOR-FRE; RT22/25,EGI-SECC,T0.4,LIGHT DOI METAL,SV9023,PETHP	SNA	1
2-3	3	DA64-04424E	PANEL-FRE; RT250,ABS,HB,SV-0157,COOL WHITE	SNA	1
2-4	3	DA97-15484A	ASSY CAP DOOR-FRE LOW; 3050 PJT,I-BLACK,250/220,RECESS,HAIR LINE,HOT STAMPING	SNA	1
2-4-1	4	6002-000215	SCREW-TAPPING; TH,+,NO,1,M4,L16,ZPC(WHT),SWRCH18A	SNA	1
2-4-2	4	DA61-09636D	CASE HANDLE; 3050-PJT,ABS,BLACK	SNA	1
2-4-3	4	DA66-01008B	LEVER-AUTO CLOSE FRE; 3050PJ,POM,I BLACK	SA	1

Exploded Views and Parts List

2-4-4	4	DA67-04489A	CAP DOOR-FRE LOW; 3050 PJT,ABS,HB,HG-0760GP,I BLACK,RT25,22 Recess, Hot-stamping	SNA	1
2-5	3	DA97-17079A	ASSY CAP DOOR-FRE UP; 3050-PJT,ABS,INOX GRAY	SNA	1
2-5-1	4	DA63-07970A	GROMMET HINGE-UP; 3050,PA66,NATURAL	SNA	1
2-5-2	4	DA67-04273A	CAP DOOR-FRE UP; 3050,ABS,HB,HG-0760GP,INOX GRAY,250/220/200	SNA	1
2-6	2	DA94-03522A	ASSY DOOR-GASKET; 3050 PJT; RT20/22/25,GRAY,FRE	SA	1
3	2	DA63-07346A	TRAY EGG; 3050,GPPS,HB,TP BLUE,165N,HI-IMPACT	SA	2
4	2	DA97-17144A	ASSY GUARD BOTTLE; 3050-PJT,GPPS	SA	1
5	2	DA63-07412A	GUARD-VARIETY; 3050,GPPS,T3,TP BLUE,220	SA	2
6	2	DA63-07415A	GUARD-FRE; 3050,GPPS,TP BLUE,220	SA	2
7	2	DA63-07416A	GUARD-REF LOW; 3050,GPPS,TP BLUE,220	SA	1
8	2	DA63-07410A	GUARD-EGG; 3050,GPPS,TP BLUE,220	SA	1