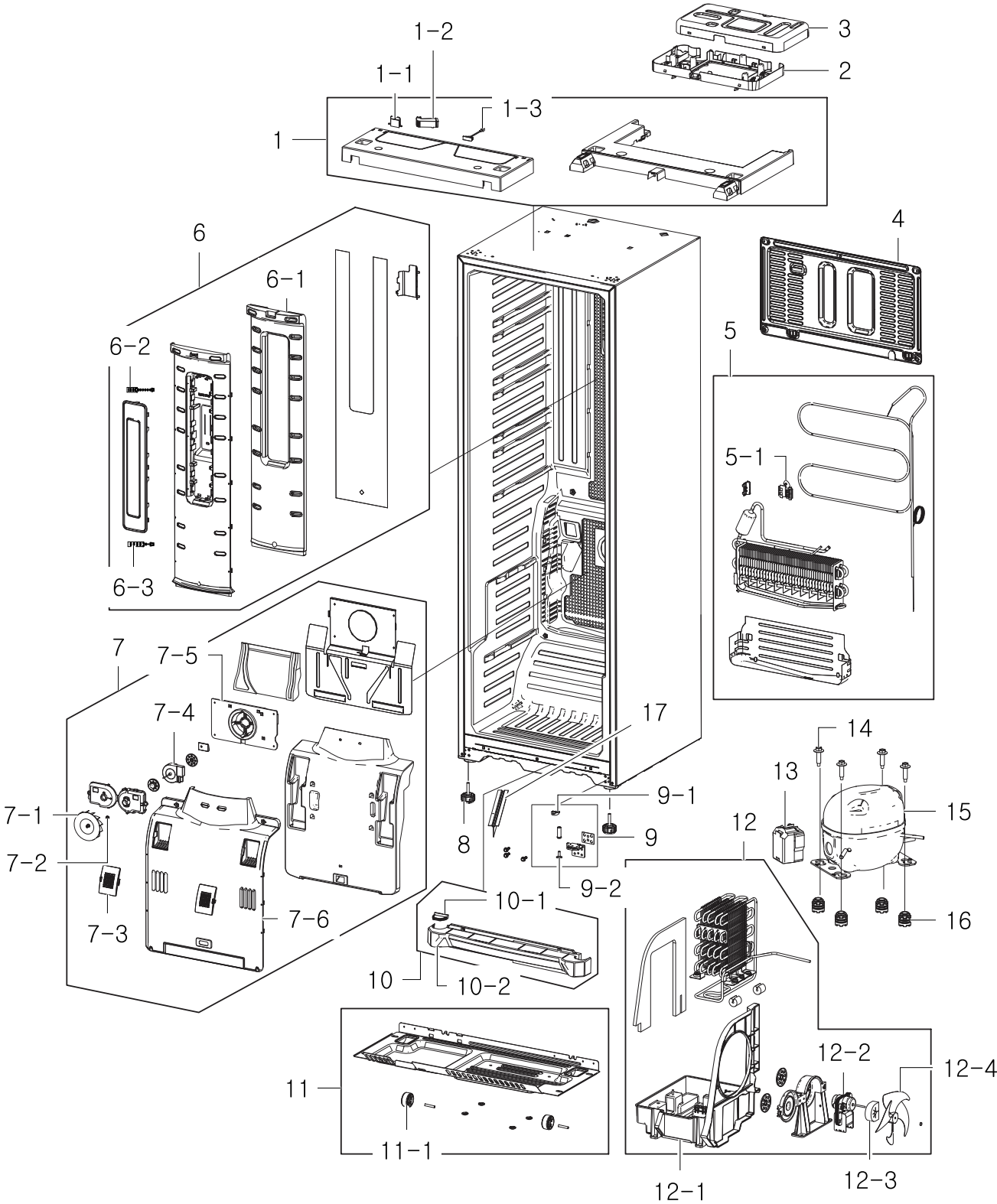


# 1. Fridge

## Exploded View



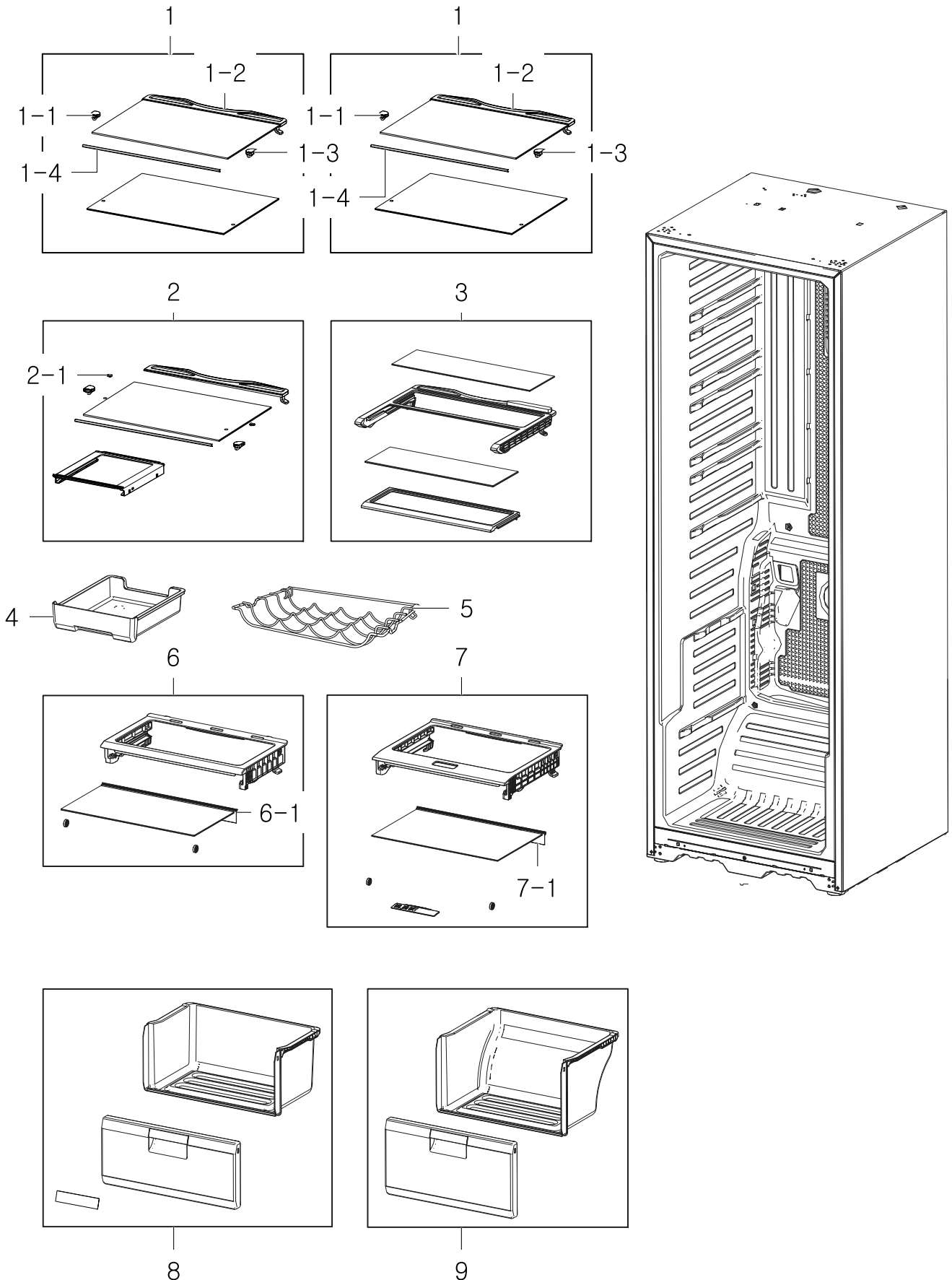
**Parts List**

| No. | Parent      | Lvl. | Loc.  | Material Code | Description & Specification                  | SNA | Qty. |
|-----|-------------|------|-------|---------------|--|-----|------|
| 1   | DA90-07142D | 2    | RO284 | DA97-11921E   | ASSY TOP-TABLE;<br>TWIN-PJT,ASSY,Creamy Sts  | SA  | 1    |
| 1-1 | DA97-11921E | 3    | RO184 | DA67-02269E   | CAP-TOP TABLE;<br>TWIN,ABS,CREAMY STS,SC-070 | SA  | 1    |
| 1-2 | DA97-11921E | 3    | RO454 | DA63-04855E   | COVER-WIRE HINGE L;<br>TWIN-PJT,PP,T1.8,-,-, | SA  | 1    |
| 1-3 | DA97-11921E | 3    | RY459 | DA34-00043C   | SWITCH REED-ASS'Y; 200VDC,1.5A,-             | SA  | 1    |
| 2   | DA97-08449G | 3    | RO285 | DA61-05371B   | CASE-PCB PANEL; NW2,N-ABS,NEO<br>VICTORY GRA | SA  | 1    |
| 3   | DA90-07142D | 2    | RO286 | DA63-03020B   | COVER PCB-PANEL;<br>CORE-PJT,SBHG1,T0.5,-,-, | SA  | 1    |
| 4   | DA90-07142D | 2    | RH001 | DA97-07461C   | ASSY COVER COMP; TWIN-PJT,ASSY               | SA  | 1    |
| 5   | DA90-07158A | 2    | RI016 | DA96-00569J   | ASSY EVAP-REF; TWIN,230V,110W                | SA  | 1    |
| 5-1 | DA96-00569J | 3    | RK215 | DA61-00603A   | FIXER-SENSOR; n-PJT,PP,-,-,-                 | SA  | 1    |
| 6   | DA90-05068C | 2    | RG173 | DA97-07475D   | ASSY COVER MULTI-REF LED;<br>TWIN_35, LED,PP | SA  | 1    |
| 6-1 | DA97-07475D | 3    | RI230 | DA62-02115A   | INSULATION-MULTI REF;<br>TWIN-35,FOAM-PS,-,- | SA  | 1    |
| 6-2 | DA97-07475D | 3    | RK390 | DA41-00519F   | PBA-LED LAMP;<br>TWIN,R-ROOM,FR-4,60*10*1.6T | SA  | 1    |
| 6-3 | DA97-07475D | 3    | RK391 | DA41-00519G   | PBA-LED LAMP;<br>TWIN,R-ROOM,FR-4,60*10*1.6T | SA  | 1    |
| 7   | DA90-05068C | 2    | RI008 | DA97-07385E   | ASSY COVER EVAP-REF;<br>TWIN-PJT,BLDC,220V~2 | SA  | 1    |
| 7-1 | DA97-07385E | 3    | RK183 | DA31-00123A   | FAN-BACKWARD; -,USP<br>05,ABS(HP-0760),-,2.0 | SC  | 1    |
| 7-2 | DA31-00010B | 3    | RR053 | DA61-20128A   | SPRING ETC-FAN;<br>STS304,PI8.8,ID7.8,OD9.8, | SA  | 1    |
| 7-3 | DA97-07385E | 3    | RI500 | DA63-02707A   | COVER-PURIFIER;<br>NEXT,PP,-,-,-,-,SC-0274   | SA  | 1    |
| 7-4 | DA97-07385E | 3    | RF431 | DA31-00146E   | MOTOR FAN-BLDC;<br>DREP5020LB,BLDC Motor,0.2 | SA  | 1    |
| 7-5 | DA97-07385E | 3    | RY172 | DA61-00417A   | CASE MOTOR; A-TOP,ABS<br>SCRAP,-,-,-,WHT,SBS | SA  | 1    |
| 7-6 | DA97-07385E | 3    | RG175 | DA63-04847A   | COVER-EVAP REF;<br>TWIN-PJT,PP,-,-,-,-,COO   | SA  | 1    |
| 8   | DA97-07466C | 3    | RO100 | DA61-00805F   | FOOT-FRONT;<br>REF-ALL,PP+MSWR10,BLACK,PP_S  | SA  | 2    |
| 9   | DA90-07149E | 2    | RO038 | DA97-07375A   | ASSY HINGE LOW-R;<br>TWIN-PJT,RIGHT          | SA  | 1    |
| 9-1 | DA97-07375A | 3    | RR981 | DA66-00401A   | CAM-RISER;<br>SAPPHIRE-PJT,NY-66,BLACK,2110R | SA  | 1    |
| 9-2 | DA97-07375A | 3    | RR332 | 6009-001548   | SCREW-SPECIAL;<br>FH,HEX,-,M6,L20,ZPC3(WHT), | SA  | 1    |

| No.  | Parent      | Lvl. | Loc.  | Material Code  | Description & Specification  | SNA | Qty. |
|------|-------------|------|-------|----------------|--|-----|------|
| 10   | DA90-07142D | 2    | RO003 | DA97-07462E    | ASSY COVER LEG FRONT;<br>TWIN-PJT,PP,CREAMY                                      | SA  | 1    |
| 10-1 | DA97-07462E | 3    | RO261 | DA67-02216E    | CAP-HINGE LOW;<br>TWIN-PJT,PP,CREAMY STS(SC-                                     | SA  | 1    |
| 10-2 | DA97-07462E | 3    | RO287 | DA63-04830E    | COVER LEG-FRONT;<br>TWIN-PJT,PP,CREAMY STS(S                                     | SA  | 1    |
| 11   | DA90-07158A | 2    | RO002 | DA97-07465A    | ASSY CHASSIS-COMP;<br>TWIN-PJT,SBHG1,T1.0,-,                                     | SA  | 1    |
| 11-1 | DA97-07465A | 3    | RR242 | DA61-40126B    | CASTER-REAR; REF-ALL,PP,-,PI<br>44,NTR,W22,-                                     | SC  | 2    |
| 12   | DA90-07158A | 2    | RH003 | DA97-11922A    | ASSY TRAY DRAIN WATER; TWIN  | SA  | 1    |
| 12-1 | DA97-11922A | 3    | RH885 | DA63-04832A    | TRAY DRAIN-WATER;<br>TWIN-PJT,PP,-,-,-,NTR                                       | SA  | 1    |
| 12-2 | DA97-11922A | 3    | RR088 | DA31-00146B    | MOTOR BLDC;<br>DRCP5030LA,1560,-,DC12V,230mA                                     | SC  | 1    |
| 12-3 | DA97-11922A | 3    | RY439 | DA62-01297A    | SEAL-SUPPORT MOTOR;<br>ET-PJT,FOAM PE,-,T15,                                     | SA  | 1    |
| 12-4 | DA31-00010B | 3    | RG064 | DA31-20102C    | FAN SIROCCO;<br>-,P,S-P/J,ABS,-,UNIT,120,HR0                                     | SA  | 1    |
| 13   | DA90-07158A | 2    |       | DA63-06122A    | COVER-RELAY;<br>MSV,N300X,T2.1,BLACK   | SA  | 1    |
| 14   | DA90-07158A | 2    | RR965 | DA60-20008A    | BOLT-HEX;<br>S25C,M6,L42.6,WHITE,ZPC   | SA  | 4    |
| 15   | DA90-07158A | 2    |       | MSV488AL1J/E01 | COMPRESSOR,115/220V~50/60HZ,BLDC,STATI<br>COMPRESSOR,115/220V~50/60HZ,BLDC,STATI | SA  | 1    |
| 16   | DA90-07158A | 2    | RH732 | DA63-02617A    | GROMMET COMP;<br>USP05,EPDM,OD18.5,BLACK   | SA  | 4    |
| 17   | DA97-07466C | 3    | RM102 | DA64-02833A    | TRIM-BLADE;<br>TWIN-PJT,PVC,-,-,-,WHITE,HD P                                     | SA  | 1    |

## 2. Premium

### Exploded View

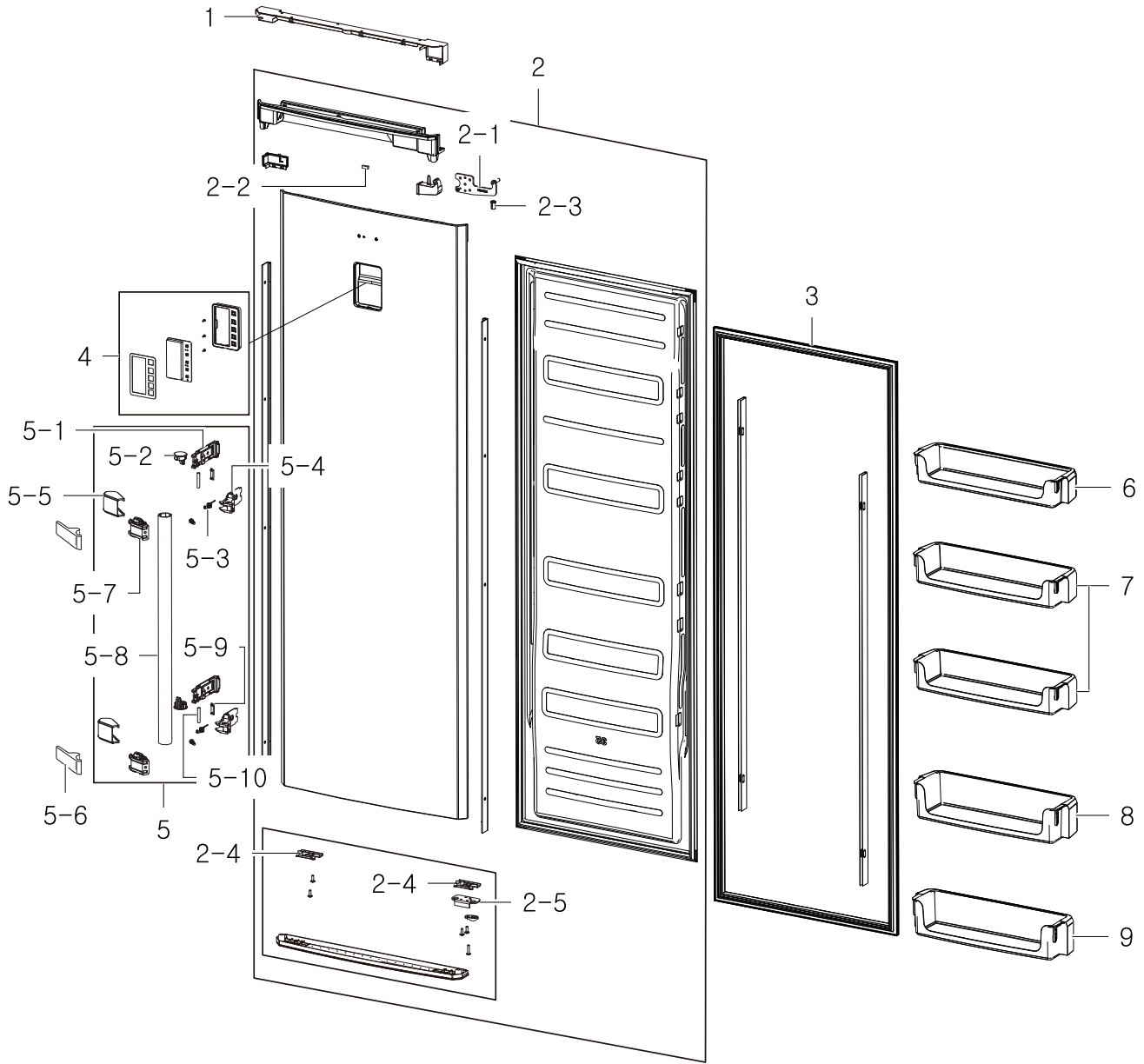


## Parts List

| No. | Parent      | Lvl. | Loc.  | Material Code | Description & Specification                  | SNA | Qty. |
|-----|-------------|------|-------|---------------|--|-----|------|
| 1   | DA90-05070C | 2    | RI037 | DA97-04091E   | ASSY SHELF REF; CORE-PJT,<br>PREMIUM         | SA  | 2    |
| 1-1 | DA97-07457B | 3    | RI558 | DA61-03116A   | STOPPER-SHELF L;<br>CORE-PJT,PP,-,-,-,SC-027 | SA  | 1    |
| 1-2 | DA97-04091E | 3    | RI650 | DA67-01445A   | SHELF-REF;<br>CORE(PREMIUM),ABS+GLASS,-,-,-, | SA  | 2    |
| 1-3 | DA97-07457B | 3    | RI559 | DA61-03117A   | STOPPER-SHELF R;<br>CORE-PJT,PP,-,-,-,SC-027 | SA  | 1    |
| 1-4 | DA97-07457B | 3    | RK888 | DA64-01821B   | TRIM-SHELF;<br>CORE,STS430,-,T0.4,-,-,PREMIU | SA  | 1    |
| 2   | DA90-05070C | 2    | RI493 | DA97-07457B   | ASSY SHELF-DEIL BIN;<br>TWIN-PJT,PREMIUM,STS | SA  | 1    |
| 2-1 | DA97-07457B | 3    | RK248 | DA63-40305A   | GROMMET-RAIL;<br>CHILLED,NY-6,-,-,-,-,-,-,-  | SA  | 4    |
| 3   | DA90-05070C | 2    | RI492 | DA97-07460A   | ASSY SHELF FOLDER; TWIN-PJT,-                | SA  | 1    |
| 4   | DA90-05069G | 2    | RI494 | DA61-05099A   | CASE-DELI BIN;<br>TWIN,GPPS,T2.5,NTR,168N,HI | SA  | 1    |
| 5   | DA90-05069G | 2    | RI160 | DA75-00268A   | RACK-WINE;<br>SVETA,STS204,OD4.5,488.5,289.0 | SA  | 1    |
| 6   | DA90-05070C | 2    | RI041 | DA97-07454B   | ASSY SHELF REF-UPP;<br>TWIN-PJT,SOURCING GLA | SA  | 1    |
| 6-1 | DA97-07455C | 3    | RE046 | DA64-02885A   | TRIM-PLATE ABSORBER;<br>TWIN-PJT,ABS+PVC,P-1 | SA  | 1    |
| 7   | DA90-05070C | 2    | RI039 | DA97-07455C   | ASSY SHELF REF-LOW;<br>TWIN-PJT,SOURCING GLA | SA  | 1    |
| 7-1 | DA97-07455C | 3    | RE046 | DA64-02885A   | TRIM-PLATE ABSORBER;<br>TWIN-PJT,ABS+PVC,P-1 | SA  | 1    |
| 8   | DA90-05069G | 2    | RI002 | DA97-07399F   | ASSY CASE-VEG UPP;<br>TWIN-PJT,NORMAL        | SA  | 1    |
| 9   | DA90-05069G | 2    | RI001 | DA97-07400F   | ASSY CASE-VEG LOW;<br>TWIN,PC-SHEET,PREMIUM  | SA  | 1    |

### 3. Door

#### Exploded View



#### Parts List

| No. | Parent      | Lvl. | Loc.  | Material Code | Description & Specification                  | SNA | Qty. |
|-----|-------------|------|-------|---------------|--|-----|------|
| 1   | DA97-08050E | 3    | RO274 | DA63-04851E   | COVER-WIRE DOOR R;<br>TWIN-PJT,ABS,-,-,-,-,- | SA  | 1    |
| 2   | DA90-06734F | 2    | RE001 | DA91-02851U   | ASSY DOOR FOAM REF;<br>TWIN,STS430J1L,A      | SA  | 1    |
| 2-1 | DA97-07378E | 5    | RO040 | DA97-07376A   | ASSY HINGE UPP; TWIN-PJT,-,-,-,-,-           | SA  | 1    |
| 2-2 | DA97-07378E | 5    | RY479 | DA61-03769A   | MAGNET-A;<br>HERMES,-,5x7x18,-,-,1200Gauss   | SA  | 1    |

| No.  | Parent      | Lvl. | Loc.  | Material Code | Description & Specification                     | SNA | Qty. |
|------|-------------|------|-------|---------------|---|-----|------|
| 2-3  | DA97-07378E | 5    | RO116 | DA63-04850A   | GROMMET HINGE;<br>TWIN-PJT,NY-66,T2.0,-,L20,    | SA  | 1    |
| 2-4  | DA97-07377E | 5    | RE043 | DA61-00776A   | STOPPER DOOR;<br>N-PJT,SHP1,T3.0,-,-,-,-        | SA  | 1    |
| 2-5  | DA97-07377E | 5    | RO105 | DA66-00344A   | CAM-HINGE RISER LOW;<br>USP05(ATOP,ET),NY-66    | SC  | 1    |
| 3    | DA90-06734F | 2    | RO756 | DA97-07366G   | ASSY-GASKET DOOR;<br>TWIN-PJT(R35,F25),-,W53    | SA  | 1    |
| 4    | DA90-06734F | 2    | RE486 | DA97-07381A   | ASSY COVER-DISPLAY REF;<br>TWIN-PJT,-,-,-,-,-   | SA  | 1    |
| 5    | DA90-07142D | 2    | RD210 | DA97-07857K   | ASSY HANDLE-EASY;<br>TWIN-PJT,VERSAILLES SIL    | SA  | 1    |
| 5-1  | DA97-07907B | 4    | RD215 | DA61-05174B   | SLIDER-HANDLE;<br>TWIN-PJT,POM,VERSAILLES<br>ST | SA  | 1    |
| 5-2  | DA97-07857K | 3    | RK016 | DA67-01452B   | CAP-HANDLE SIDE;<br>CORE-PJT,ABS,-,-,-,-,SILVE  | SA  | 2    |
| 5-3  | DA97-07857K | 3    | RD214 | DA61-05177A   | SPRING ETC-HANDLE;<br>TWIN-PJT,PW1,6.6,5.4,7    | SA  | 2    |
| 5-4  | DA97-07907B | 4    | RE473 | DA61-05173B   | SUPPORT-HANDLE A;<br>TWIN-PJT,PA+ABS,SHP1,VE    | SA  | 1    |
| 5-5  | DA97-07857K | 3    | RD212 | DA63-04929D   | COVER-SUPT HANDLE FRONT;<br>TWIN-PJT,ABS,VER    | SA  | 2    |
| 5-6  | DA90-07142D | 2    | RD213 | DA63-04928D   | COVER-SLIDER HANDLE;<br>TWIN-PJT,ABS,VERSAIL    | SA  | 2    |
| 5-7  | DA97-07857K | 3    | RE476 | DA61-05172B   | SUPPORT-HANDLE B;<br>TWIN-PJT,NY-66,VERSAILL    | SA  | 2    |
| 5-8  | DA97-07857K | 3    | RO391 | DA64-03057B   | HANDLE BAR;<br>TWIN-PJT,AL,L1673.5,INOX(SC-0    | SA  | 1    |
| 5-9  | DA97-07907B | 4    | RO263 | DA73-00238B   | RUBBER-HANDLE;<br>TWIN-PJT,SILICON,VERSAILLE    | SA  | 1    |
| 5-10 | DA97-07857K | 3    | RD211 | DA66-00664A   | SHAFT-HANDLE;<br>TWIN-PJT,STS304,L25.6,EASY     | SA  | 2    |
| 6    | DA90-05071C | 2    | RE365 | DA63-04872A   | GUARD REF-UPP;<br>TWIN-PJT,GPPS,NTR,168N        | SA  | 1    |
| 7    | DA90-05071C | 2    | RE057 | DA63-04875A   | GUARD REF-MID;<br>TWIN-PJT,GPPS,NTR,168N        | SA  | 2    |
| 8    | DA90-05071C | 2    | RE343 | DA63-04873A   | GUARD BOTTLE;<br>TWIN-PJT,GPPS,NTR,168N         | SA  | 1    |
| 9    | DA90-05071C | 2    | RE368 | DA63-04874A   | GUARD REF-LOW;<br>TWIN-PJT,GPPS,NTR,168N        | SA  | 1    |