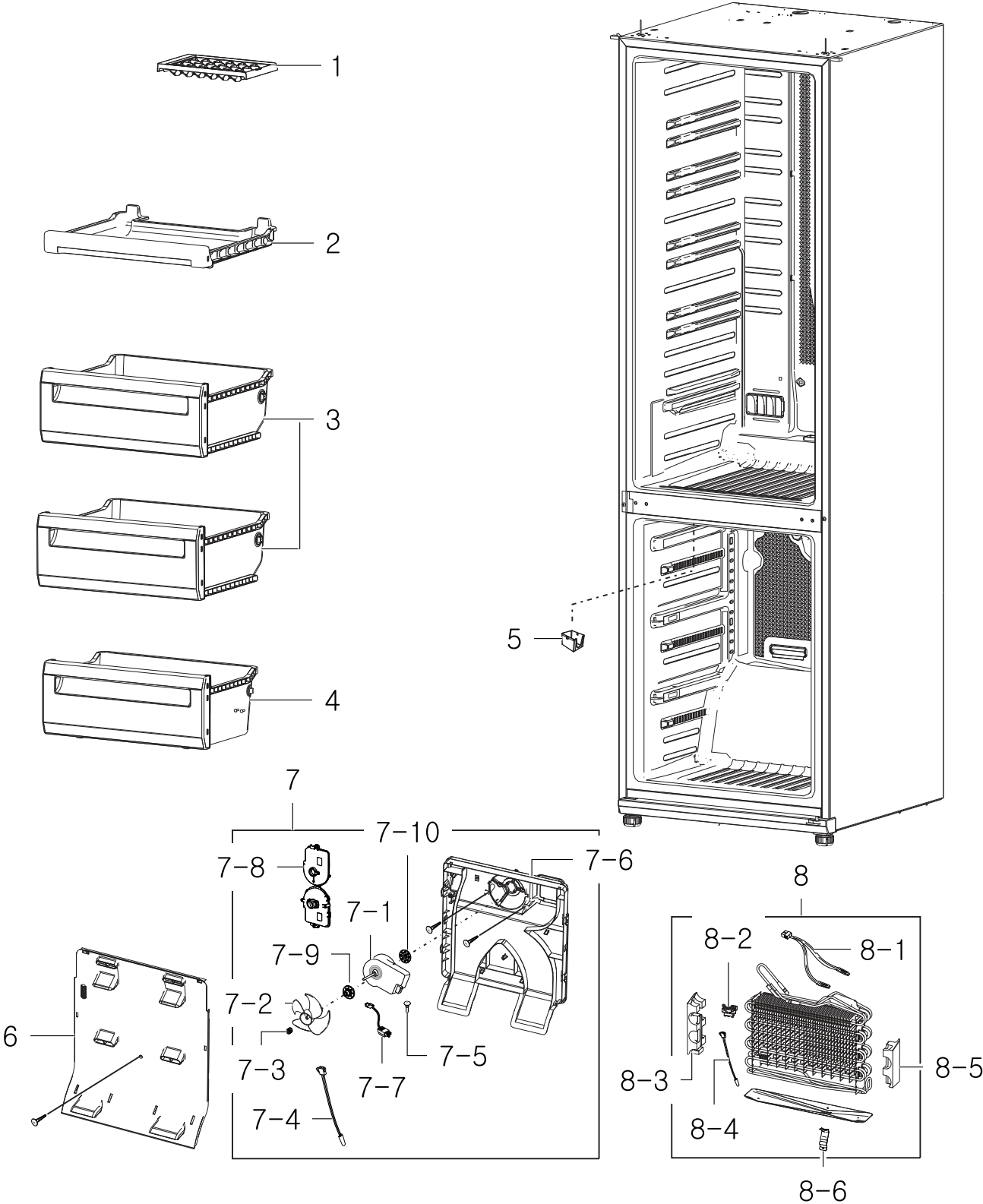


1. Freezer

Exploded View

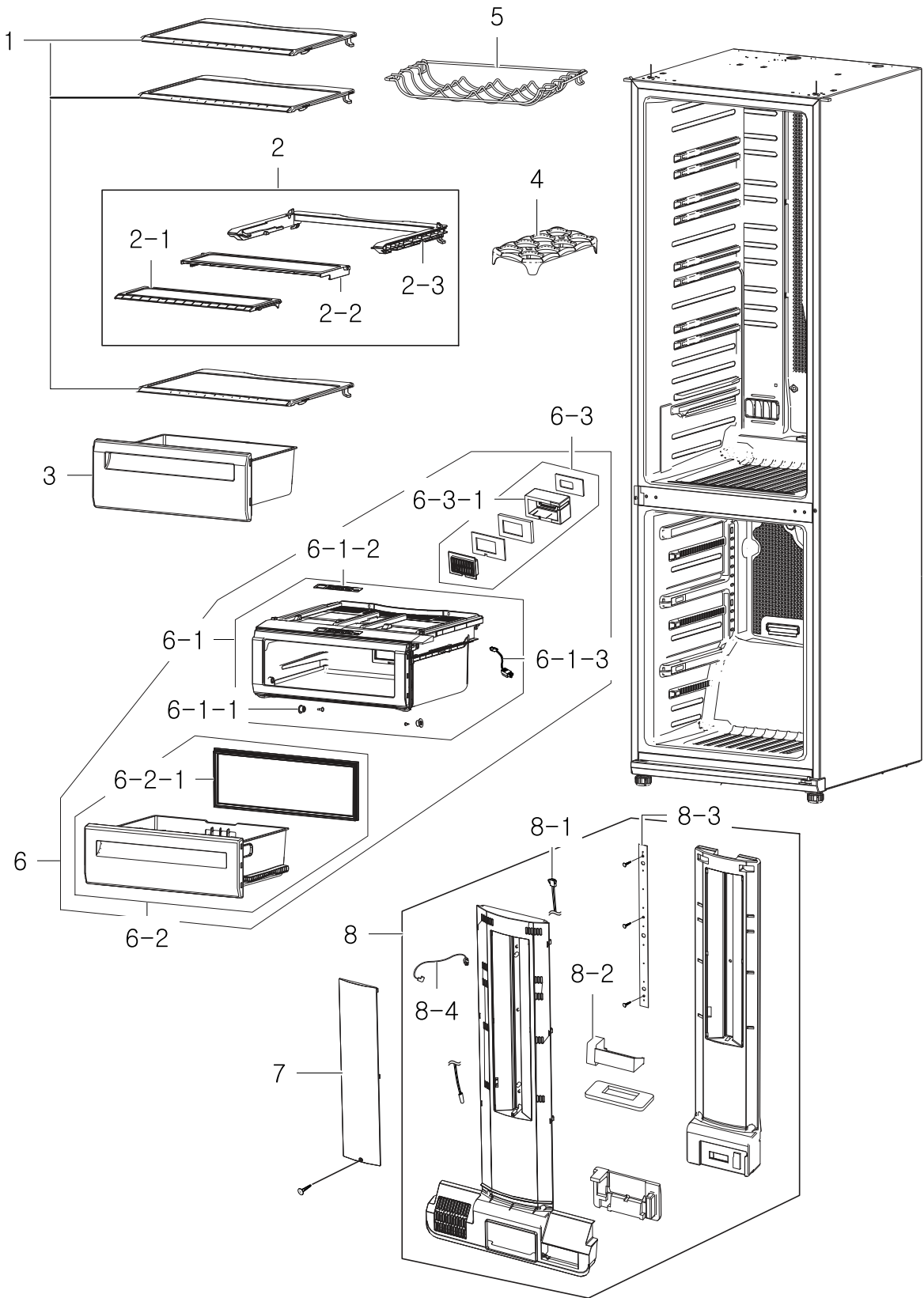


Parts List

No.	Lvl.	Loc.	Material Code	Description & Specification	SNA	Qty.
1	2	RM088	DA63-04476A	TRAY ICE; NW2-PJT,PP,-,-,-,COOL WHT,-	SA	1
2	2	RI242	DA97-04099B	ASSY TRAY-FRE UPP; CORE-PJT,-,-,-,SC-0274	SA	1
3	2	RG158	DA97-07808A	ASSY TRAY-FRE MID; SVETA-PJT,3 PIECE	SA	2
4	2	RI057	DA97-07809A	ASSY TRAY-FRE LOW; SVETA-PJT,3 PIECE	SA	1
5	2	RI222	DA63-02902B	COVER-FIXER HOUSING V; NEXT-PJT,GALVA,T0.	SA	1
6	2	RF006	DA97-04020C	ASSY COVER-EVAP FRONT; CORE-PJT,SAEL NTR	SA	1
7	2	RF524	DA97-04021H	ASSY COVER-EVAP REAR; CORE,BLDC	SA	1
7-1	3	RF431	DA31-00146E	MOTOR BLDC FAN; 3.2,2520 RPM,DC 12V,DREP5	SA	1
7-2	3	RG063	DA31-00148A	FAN-PROPELLER; -,LMF,ABS,-,HF0660I	SA	1
7-3	3	RR053	DA61-20128A	SPRING ETC-FAN; STS304,PI8.8,ID7.8,OD9.8,	SA	1
7-4	3	RF464	DA32-00006G	SENSOR TEMP; PX-41C,BBC,-,5V,-,-,F DEF SE	SC	1
7-5	3	RR066	DA63-40167A	GROMMET-COVER CHIL; SIL16,WHITE	SA	1
7-6	3	RF319	DA63-03076B	COVER EVAP-REAR; CORE-PJT,PPSCRAP,-,W421.	SA	1
7-7	3	RY716	DA39-00060K	ASSY WIRE HARNESS-MOTOR; ALL,12VDC,UL+IEC	SA	1
7-8	3	RF455	DA63-01809B	COVER MOTOR-BLDC; AT,PP,NTR,CNTK-P-100,PP	SA	1
7-9	3	RO545	DA63-01808A	GROMMET MOTOR; BLDC,NBR,BLACK,H20	SA	1
7-10	3	RO138	DA63-01146A	GROMMET-MOTOR,REAR; A-TOP,NBR,BLACK,BLDC	SA	1
8	2	RF011	DA96-00280K	ASSY EVAP-FRE; SVETA,PIN,220~240V	SA	1
8-1	3	RR244	DA47-10148X	THERMO FUSE-ASSY; AC250V,10A,77S.O.D,	SA	1
8-2	3	RG124	DA61-02901A	FIXER-SENSOR EVAP; CORE-PJT,PP,-,NTR,-	SA	1
8-3	3	RF492	DA60-00153A	SPACER-EVAP L; CORE-PJT,PS FOAM	SNA	1
8-4	3	RG108	DA32-00006S	SENSOR TEMP; PX-41C, 502AT,AW-PJT,-40~110	SA	1
8-5	3	RF124	DA60-00154A	SPACER-EVAP R; CORE-PJT,PS FOAM	SNA	1
8-6	3	RK962	DA71-00152A	BRACKET-DRAIN; SR-32,35,A1050H16,T0.6,-,-	SA	1

2. Fridge

Exploded View

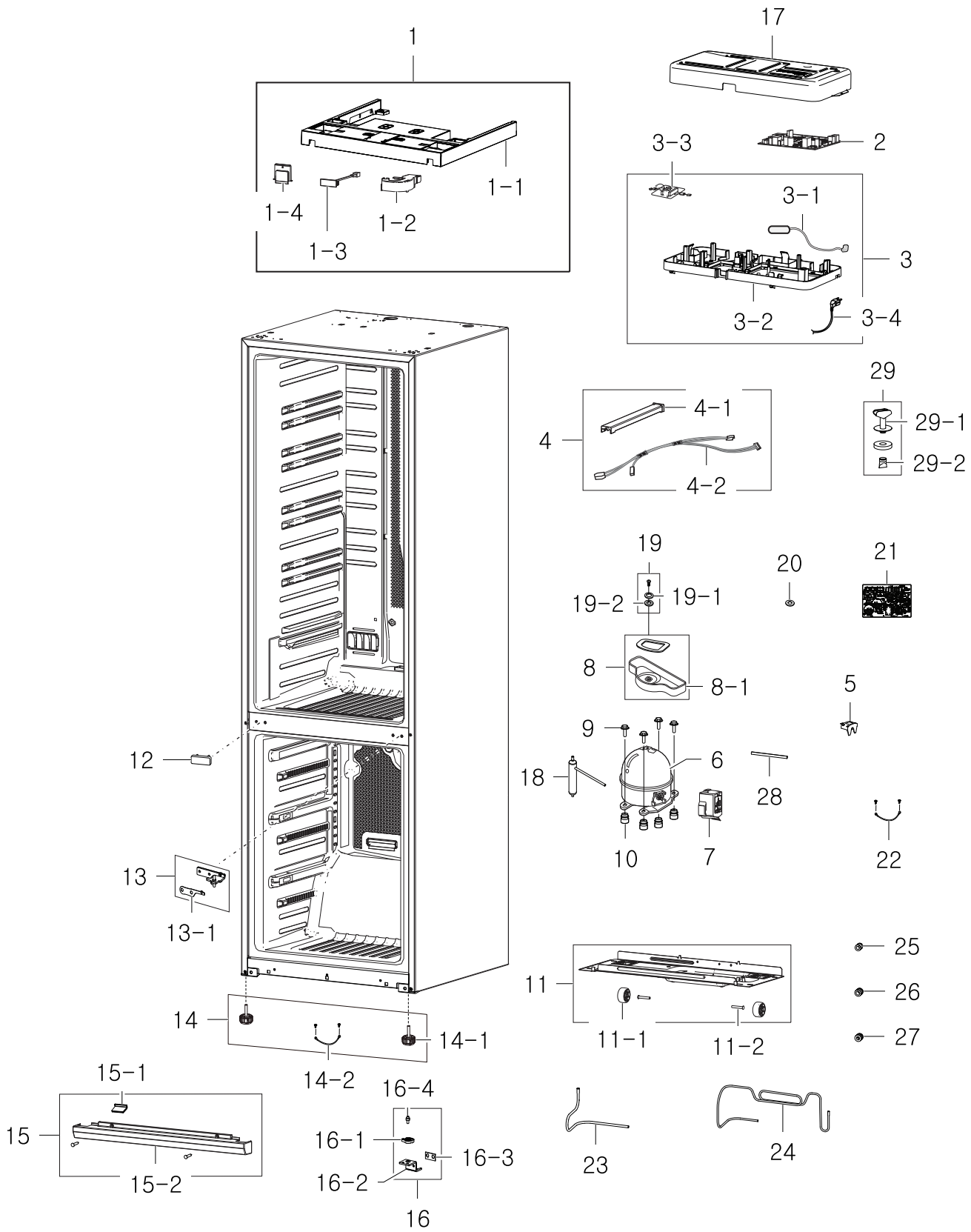


Parts List

No.	Lvl.	Loc.	Material Code	Description & Specification	SNA	Qty.
1	2	RI037	DA97-07794B	ASSY SHELF REF; SVETA-PJT,STS.TRIM	SC	3
2	2	RG165	DA97-07830B	ASSY SHELF-FOLD; SVETA-PJT,INSERT	SC	1
2-1	3	RI472	DA97-08177B	ASSY SHELF-FOLD A; SVETA-PJT,STS, TRIM	SA	1
2-2	3	RI470	DA67-02381A	SHELF-FOLD B; SVETA-PJT,ABS,COOL WHITE,IN	SA	1
2-3	3	RI471	DA67-02386A	SHELF-FRAME FOLD; SVETA-PJT,ABS,COOL WHIT	SA	1
3	2	RI087	DA97-07814A	ASSY CASE-VEG HIGH; SVETA-PJT,3 PIECE	SA	1
4	2	RE355	DA63-03869A	TRAY-EGG; TD-PJT,PP,T2,99,189,WHITE	SC	1
5	2	RI160	DA75-00268A	RACK-WINE; SVETA,STS204,OD4.5,488.5,289.0	SA	1
6	2	RI466	DA97-07817C	ASSY-CONVERTILBE; SVETA-PJT,HAIR LINE N	SA	1
6-1	3	RI467	DA97-07815C	ASSY CASE-CONVERTILBE; SVETA-PJT,DISPLAY	SA	1
6-1-1	4	RO355	DA66-00151A	ROLLER-FRONT; A-TOP,POM, 16,-,WHT,-,CONV	SA	2
6-1-2	4	RR563	DA41-00632B	ASSY PCB KIT; LED DISPLAY,SVETA,142*28,TA	SA	1
6-1-3	4	RI468	DA96-00583A	ASSY W/HARNESS-PANTRY PCB; ALL,12VDC,UL+I	SA	1
6-2	3	RI469	DA97-07816A	ASSY TRAY-CONVERTILBE; SVETA-PJT,3 PIECE	SA	1
6-2-1	4	RI054	DA63-01783F	GASKET-CONVERTIBLE; CORE67(PREMIUM),SF-PV	SA	1
6-3	3		DA97-04106D	ASSY DAMPER-CONVERTIBLE; CORE-PJT(PRIMIUM	SA	1
6-3-1	4	RK370	DA31-00071D	MOTOR DC-DAMPER; DC 12V,MAX 60mA	SA	1
7	2	RG025	DA63-03026A	COVER LAMP-REF; CORE-PJT,PP,-,-,-,-,-,L	SA	1
8	2	RI019	DA97-03878G	ASSY COVER-MULTI REF; CORE,RL44,LED,CONV	SA	1
8-1	3	RR375	DA32-10105R	SENSOR TEMP; 502AT,ET-PJT,-50~50,5V,1000	SA	1
8-2	3	RK368	DA31-00043F	MOTOR DC-DAMPER; -,CORE-PJT,Max 60mA,-,-,	SA	1
8-3	3	RK389	DA41-00519E	ASSY LAMP LED; 10ea,FR-4,490*20,WHITE,SMA	SA	1
8-4	3	RR869	DA96-00424J	ASSY WIRE HARNESS-LED; ALL,12VDC,ALL,UL,A	SA	1

3. Cabinet

Exploded View



Parts List

No.	Lvl.	Loc.	Material Code	Description & Specification	SNA	Qty.
1	2	RO268	DA97-07770J	ASSY CAP-CABI; SVETA-PJT,HIPS,SNOW WHITE,	SA	1
1-1	3	RO269	DA67-02369A	CAP-CABI; SVETA-PJT,ABS,SNOW WHITE(SC-975	SA	1
1-2	3	RO454	DA63-03029D	COVER-WIRE HINGE L; CORE-PJT,PP,-,-,-,-,-	SA	1
1-3	3	RY001	DA34-00043A	SWITCH REED; 13mm,UL1007 AWG 22,100,HOOK	SA	1
1-4	3	RR231	DA67-01433K	CAP-HOLE HINGE UPP; CORE-PJT,ABS,-,HB,SNO	SA	1
2	1	RY475	DA92-00239B	ASSY PCB MAIN; T-PANEL,SVETA-PJT,12V,5V,T	SA	1
3	2	RO270	DA97-11941A	ASSY CASE-PBA MAIN; SVETA,ASSY	SA	1
3-1	3	RK691	DA32-00011Z	SENSOR TEMP; PX-41C,SVETA-PJT,-40~110??	SA	1
3-2	3	RO285	DA61-07747A	CASE PCB-PANEL; HIPS,NTR,VE-1877	SA	1
3-3	3	RH083	DA27-00032A	COIL FILTER-EMI; 400L,8.0mH,60*82mm,BOX,S	SA	1
3-4	3	RK076	3903-000794	CBF-POWER CORD; UCP-2,250V,10/16A,L2100,-	SA	1
4	2	RO190	DA97-11904F	ASSY COVER-WIRE CABI; SVETA,E OPTION,ASSY	SNA	1
4-1	3	RR229	DA63-03074B	COVER-WIRE CABI; CORE/SVETA,PP SCRAP,NTR	SA	1
4-2	3	RO200	DA96-00580J	ASSY W/HARNESS-CABI; BMF,12VDC,UL+IEC,UL,	SA	1
5	2	RO354	DA34-00004B	RELAY PROTECTOR O/L; 4TM308RFBYY-82	SC	1
6	2		MSV4A1AL1J/E01	COMPRESSOR,BLDC IPM,11.1CC,115/220V,STAI; COMPRESSOR,BLDC IPM,11.1CC,115/220V,STAI	SA	1
7	2	RH015	DA63-06122A	COVER RELAY; MSV,MPPO,T2.0,5V-A,BLACK,M-H	SA	1
8	2	RH003	DA97-11949A	ASSY TRAY-DRAIN WATER; SVETA PJT,BLACK	SA	1
8-1	3	RO361	DA63-05124A	TRAY-DRAIN WATER; SVETA-PJT,CR-SPCC,BLACK	SA	1
9	2		6011-004061	BOLT-HEX; M6,L42.6,SWCH10A	SA	4
10	2	RH732	DA63-02617A	GROMMET COMP; USP05,EPDM,OD27.0,BLACK	SA	4
11	2	RO002	DA97-03896A	ASSY CHASSIS-COMP; CORE-PJT,SBHG1,T1.0,-,	SA	1
11-1	3	RR242	DA61-40126B	CASTER-REAR; REF-ALL,PP,NATURAL	SC	2
11-2	3	RH064	DA60-90146A	PIN-CASTER; SR-289-429,MSWR10,OD6.0,L38,Z	SA	2
12	2	RO083	DA67-00195A	CAP-HINGE HOLE-MID; SR-32,35,ABS,-,HB,COO	SA	1

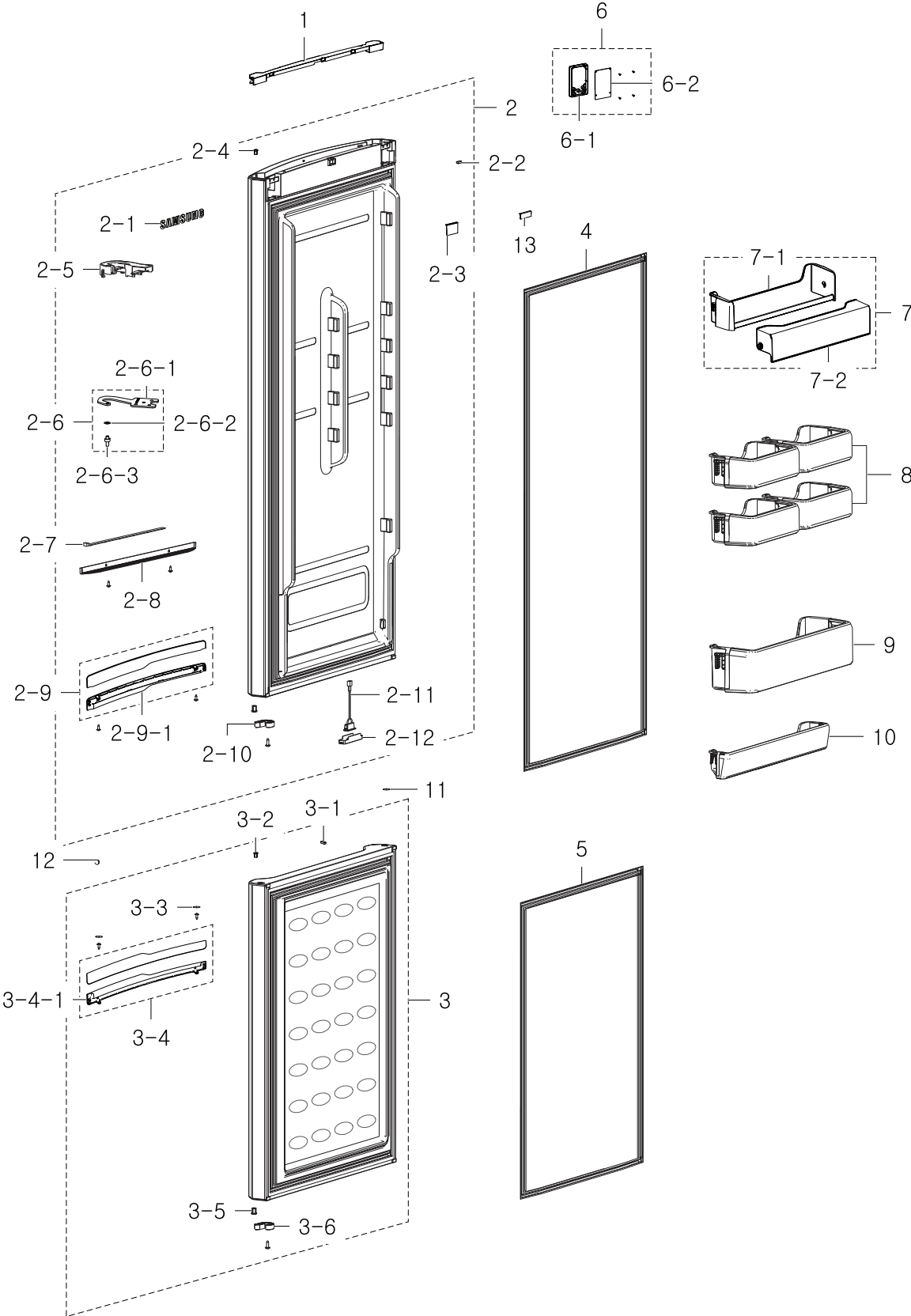
No.	Lvl.	Loc.	Material Code	Description & Specification	SNA	Qty.
13	2	RO039	DA97-03900C	ASSY HINGE-MID; SVETA-PJT,T4.0,Ni-Cr Plat	SA	1
13-1	3	RK764	DA63-03028A	SHIM HINGE-MID; CORE,HIPS,T1.0,NTR	SA	1
14	2	RU423	DA97-13417A	ASSY CABINET-BOTTOM; SVETA,PP_SCRAP,595.0	SNA	1
14-1	3	RO100	DA61-00805F	FOOT-FRONT; REF-ALL,PP+MSWR10,BLACK,PP_S	SA	2
14-2	3	RK925	DA39-00429A	ASSY WIRE HARNESS-EARTH; ALL,FREE VOLT,UL	SC	1
15	2	RO003	DA97-07755A	ASSY COVER LEG FRONT; SVETA-PJT,PP,T1.8,5	SA	1
15-1	3	RO085	DA67-01434D	CAP-HOLE HINGE LOW; CORE-PJT,PP,-,-,-,SC-	SA	1
15-2	3	RO287	DA63-05089A	COVER-LEG FRONT; SVETA-PJT,PP,SNOW WHITE	SA	1
16	2	RO036	DA97-03947C	ASSY HINGE-LOW; CORE-PJT,T4.0,-,-,PAINTIN	SA	1
16-1	3	RE470	DA61-02756B	GUIDE-AUTO CLOSE; CORE-PJT,PA66,HB,KN333G	SA	1
16-2	3	RO598	DA61-02753A	HINGE-LOW; CORE,SHP1,T4.0,-,-,-,BLACK	SA	1
16-3	3	RX034	DA63-03202A	SHIM HINGE-LOW; CORE-PJT,HIPS,T1.5,-,-,-,	SA	1
16-4	3	RO790	DA66-00385A	SHAFT-HINGE; CORE,SWCH10A,-,OD6,-,-,ZPC3(SA	1
17	2	RO286	DA63-06646A	COVER PCB-PANEL; SVETA,GI-SGCC,T0.5,W481.	SA	1
18	2	RH044	DA62-04309C	DRYER; C1220,114,SINGLE MOUTH,Outlet ID2.	SA	1
19	2	RS707	DA60-00018A	SCREW MACHINE; TH,+,PASS,STS304	SA	1
19-1	3	RF494	DA60-40104J	WASHER; T3-PJT,STS304,WHITE,T0.8	SNA	1
19-2	3		DA60-00015A	FASTENER-WASHER; T3-PJT,NBR,PI 3.7	SNA	1
20	2	RR241	DA66-00073B	SHAFT-WASHER; RD-PVC,SR-32,35,-,-,-,T1.0,	SA	1
21	1	RO326	DA92-00155A	ASSY PCB INVERTER; INVERTER,CORE11,148*98	SA	1
22	2	RK934	DA39-20389L	ASSY WIRE HARNESS-EARTH; ALL,FREE VOLT,UL	SC	1
23	2	RH085	DA62-01226B	PIPE-CONNECT SUCTION; CORE-PJT,C1220T0,-	SA	1
24	2	RR326	DA62-03401A	PIPE CONNECT-IMMERSION; SVETA,SWST,-,OD4.	SA	1
25	2		DA60-00279A	FITTING-LOKRING 16; GRAND/SAM/HERMES,11SM	SA	2
26	2		DA60-00280A	FITTING-LOKRING 33; GRAND/SAM/HERMES,11SM	SA	1
27	2		DA60-00281A	FITTING-LOKRING 43; GRAND/SAM/HERMES,11SM	SA	1
28	2	RH026	DA73-10190U	PIPE-CONNECT DISC,B; TD-PJT,CU,-,C1220T,O	SA	1
29	3		DA62-00017A	TUBE-DRAIN FRE-ASSY; PP,-,-,-,-,SR-32,35,	SNA	1

Exploded Views and Parts List

No.	Lvl.	Loc.	Material Code	Description & Specification	SNA	Qty.
29-1	4		DA62-00009A	TUBE-DRAIN FRE; PP,-,-,-,SR-32,35,-	SNA	1
29-2	4	RO162	DA63-00246B	GROMMET-DRAIN HOSE; CORE-PJT,NBR,-,-,-,-,	SA	1

4. Door

Exploded View



Parts List

No.	Lvl.	Loc.	Material Code	Description & Specification	SNA	Qty.
1	2		DA63-07938A	COVER WIRE-DOOR; SVETA-PJT,ABS,HB,Snow Wh	SNA	1
2	2	RE001	DA91-02921H	ASSY DOOR FOAM-REF; SVETA, RL55, Snow Whi	SA	1
2-1	3	RO716	DA64-04020D	MASCOT; ALL,NI,-,T0.06,L80	SA	1
2-2	4	RY479	DA61-03769A	MAGNET-A; HERMES,FERRITE,1600Gauss	SA	1
2-3	4		DA67-03922A	CAP SPACE-RIGHT; CORE11,SVETA,ABS,HB,HG-0	SA	1
2-4	4	RO116	DA63-03046A	GROMMET-HINGE; CORE PJT,PA66,L14,ID6,OD10	SA	2
2-5	4	RO456	DA63-03030D	COVER-WIRE HINGE R; CORE-PJT,PP,-,-,-,-,-	SA	1
2-6	4	RO040	DA97-03899A	ASSY HINGE-UPP; CORE,T4.5,-,-,PAINTING(BL	SA	1
2-6-1	5	RR232	DA61-02751A	HINGE-UPP; CORE,SHP1,T4.5,-,-,PAINTING(BL	SA	1
2-6-2	5	RR377	DA66-00073C	SHAFT-WASHER, C; RD-PVC,SR-32,35,-,-,-,T1	SA	1
2-6-3	5	RO790	DA66-00385A	SHAFT-HINGE; CORE,SWCH10A,-,OD6,-,-,ZPC3(SA	1
2-7	4		DA96-01098A	ASSY LAMP LED; 4ea,FR-4,300*10,ICEBLUE,SM	SA	1
2-8	4	RE234	DA63-05105A	COVER-LAMP HANDLE; SVETA-PJT,PP,NTR,BASIC	SA	1
2-9	4	RE233	DA97-07776W	ASSY COVER-HANDLE REF; SVETA-PJT,AL5052,S	SA	1
2-9-1	5	RO054	DA63-05104H	COVER-HANDLE REF; SVETA-PJT,ABS,523.6,54.	SA	1
2-10	4	RE440	DA61-02773B	STOPPER-DOOR; CORE-PJT,POM,LW301,NATURAL	SA	1
2-11	4	RY001	DA34-00043A	SWITCH REED; 13mm,UL1007 AWG 22,100,HOOK	SA	1
2-12	4	RE235	DA67-02385A	CAP-REED SWITCH; SVETA-PJT,PP,SNOW-WHITE(SA	1
3	2	RD001	DA91-02915Q	ASSY DOOR FOAM FRE; SVETA-PJT/RL55,SNOW-W	SA	1
3-1	5	RY479	DA61-03769A	MAGNET-A; HERMES,FERRITE,1600Gauss	SA	1
3-2	5	RO116	DA63-03046A	GROMMET-HINGE; CORE PJT,PA66,L14,ID6,OD10	SA	1
3-3	4	RD238	DA67-01782J	CAP-SCREW INLAY; SVETA,ABS,SNOW WHITE(SC-	SA	2
3-4	4	RD239	DA97-07777W	ASSY COVER-HANDLE FRE; SVETA-PJT,AL5052,S	SA	1
3-4-1	5	RO053	DA63-05099H	COVER-HANDLE FRE; SVETA-PJT,ABS,523.6,54.	SA	1
3-5	5	RO116	DA63-03046A	GROMMET-HINGE; CORE PJT,PA66,L14,ID6,OD10	SA	1

No.	Lvl.	Loc.	Material Code	Description & Specification	SNA	Qty.
3-6	5	RE440	DA61-02773B	STOPPER-DOOR; CORE-PJT,POM,LW301,NATURAL	SA	1
4	2	RR238	DA97-07366K	ASSY-GASKET DOOR REF; SVETA-PJT,RL45, SC-	SA	1
5	2	RU513	DA97-07366J	ASSY-GASKET DOOR FRE; SVETA-PJT,SC-97487,	SA	1
6	2		DA97-07873C	ASSY COVER DISPLAY; SVETA-PJT,LED, ICE BL	SA	1
6-1	3	RE250	DA63-05146A	COVER-DISPLAY LED; SVETA-PJT,ABS,DARK-GLA	SA	1
6-2	3		DA41-00662B	ASSY MODULE; LED DISPLAY,SVETA,71.5*120.5	SA	1
7	2	RE028	DA97-07787A	ASSY GUARD-DAIRY; SVETA-PJT	SA	1
7-1	3	RE390	DA63-05116A	GUARD-DAIRY; SVETA-PJT,PP,COOL WHITE	SA	1
7-2	3	RE386	DA63-05119A	COVER-GUARD DAIRY; SVETA-PJT,GPPS,TRP	SA	1
8	2	RE244	DA97-07785B	ASSY GUARD-VARIETY; SVETA-PJT,COVER GPPS	SA	4
9	2	RE017	DA97-07784B	ASSY GUARD BOTTLE; SVETA-PJT	SA	1
10	2		DA97-07783B	ASSY GUARD REF-LOW; SVETA-PJT	SA	1
11	2	RO515	DA67-01612D	CAP-HINGE HOLE; CORE-PJT,PP,-,-,SNOW WH	SA	1
12	2	RK034	DA67-30218R	CAP-SCREW; PP,-,BJ750,SNOW WHITE,SNOW WHI	SA	1
13	2		DA67-03921A	CAP SPACE-LEFT; CORE11,SVETA,ABS,HB,HG-07	SA	1