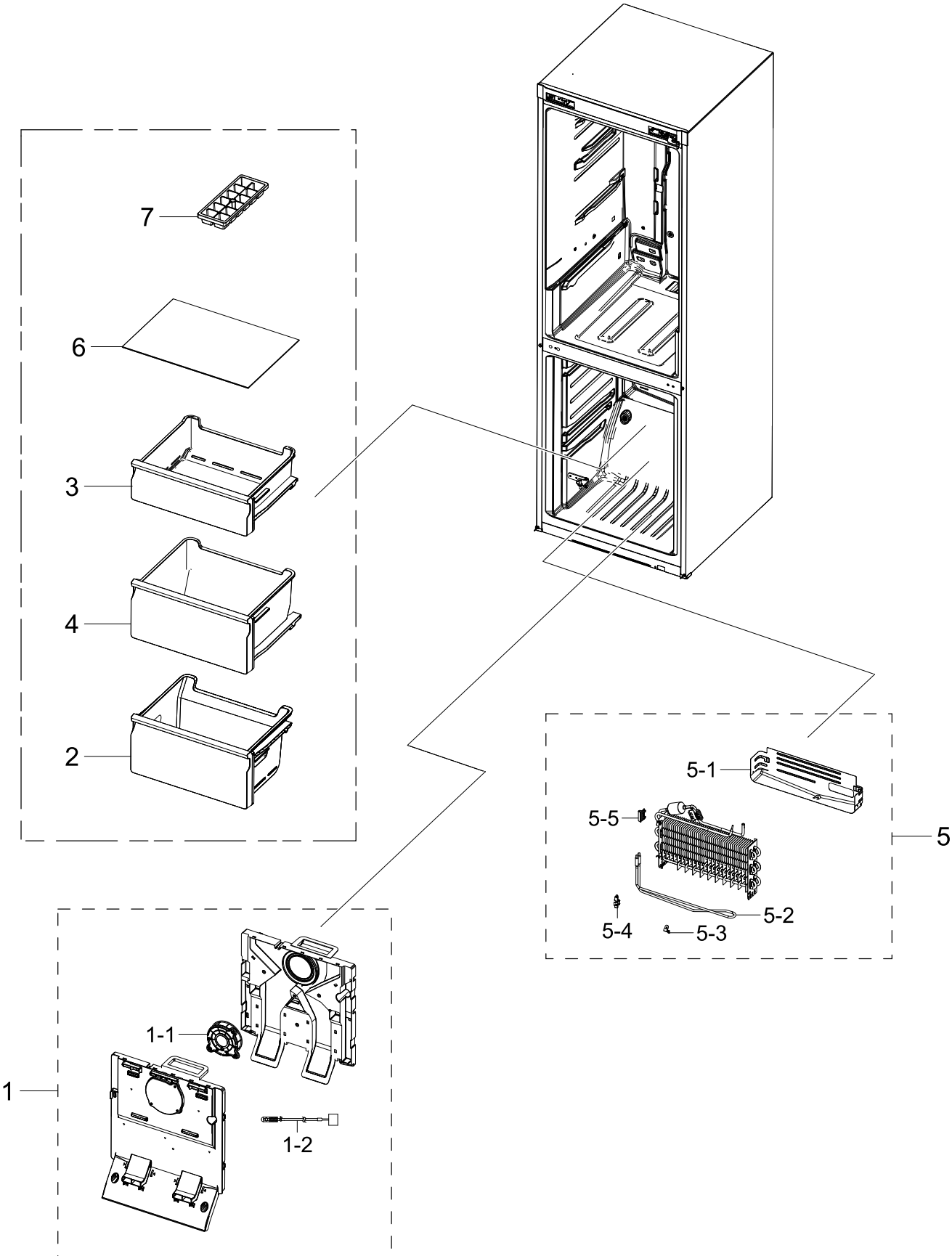


1. Freezer

Exploded View



Parts List

| No. | Lvl. | Loc. | Material Code | Description & Specification | SNA | Qty. |
|-----|------|-------|---------------|--|-----|------|
| 1 | 2 | M0303 | DA97-19096A | ASSY COVER EVAP-FRE; 3050-BMF,No SEAL | SA | 1 |
| 1-1 | 3 | | DA31-00334C | MOTOR BLDC FAN;12035GE-12M-YT,1775±7%,12 | SA | 1 |
| 1-2 | 3 | A1018 | DA32-10105X | SENSOR TEMP; PX-41C,502AT,DKST1329GW,QUEE | SA | 1 |
| 2 | 2 | G0267 | DA97-13475A | ASSY TRAY-FRE LOW; 3050,W466.2 | SA | 1 |
| 3 | 2 | M0121 | DA97-13480A | ASSY TRAY-FRE UPP; 3050,W479.1,L394.3 | SA | 1 |
| 4 | 2 | G0268 | DA97-13472A | ASSY TRAY-FRE MID; 3050,W466.3,H227.0 | SA | 1 |
| 5 | 2 | A0163 | DA96-01009C | ASSY EVAP-FRE; 3050-BMF | SA | 1 |
| 5-1 | 3 | A0754 | DA61-08936A | PLATE-DRAIN; 3050,GI-SGCC,T0.3 | SA | 1 |
| 5-2 | 3 | | DA47-00507A | HEATER METAL SHEATH; AC230V,3050 BMF, 352 | SNA | 1 |
| 5-3 | 3 | M9010 | DA61-03644A | PLATE-EVAP HEATER; AW-PJT,Al,T0.7 | SA | 1 |
| 5-4 | 3 | G0205 | DA61-07410A | FIXER-HEATER FRE; NW2,PP,NATURAL,BJ750 | SA | 1 |
| 5-5 | 3 | A0744 | DA61-07411A | FIXER-FUSE; NW2,PP,NATURAL,BJ750 | SA | 1 |
| 6 | 2 | | DA97-15985A | ASSY SHELF GLASS-FRE; RL31/29,NO TRIMS | SA | 1 |
| 7 | 2 | A0120 | DA67-40146B | TRAY ICE; SR-1500,PP,HB,COOL WHITE | SA | 1 |

Parts List

| No. | Lvl. | Loc. | Material Code | Description & Specification | SNA | Qty. |
|------|------|-------|---------------|--|-----|------|
| 1 | 2 | G0090 | DA41-00519R | ASSY LAMP LED; 3ea,CEM-1,65*10*1.6T,WHITE | SA | 1 |
| 2 | 2 | A0280 | DA63-08570A | COVER LAMP; 3050-BMF,GPPS,T2,TP BLUE | SA | 1 |
| 3 | 2 | A0730 | DA97-13473A | ASSY CASE-VEG UPP; 3050,W479.2,L356.1 | SA | 1 |
| 4 | 2 | | DA97-13502D | ASSY SHELF GLASS-REF; RL31/29,COOL WHITE | SA | 2 |
| 5 | 2 | | DA97-13550A | ASSY SHELF-VEG; RL31/29 BETTER,SHELF VEG | SA | 1 |
| 6 | 2 | | DA97-13616A | ASSY SHELF SLIDE-OUT; 3050(RL310),HOT STA | SA | 1 |
| 7 | 2 | G0239 | DA97-13715C | ASSY COVER MULTI-REF; RB3000,FRESH ROOM | SA | 1 |
| 7-1 | 3 | G0242 | DA31-00043F | MOTOR GEARED DC DAMPER; NSBA001TF1,DC 12V | SA | 1 |
| 7-2 | 4 | A1018 | DA32-00006N | SENSOR TEMP; PX41C,502AT,DKST1329,TGV,-40 | SC | 1 |
| 7-3 | 3 | | DA62-04151B | SEAL INS MULTI-REF LOW; 3050_BMF,PE OPEN | SA | 1 |
| 7-4 | 3 | | DA62-04579A | INSULATION-MULTI REF A; RB3000,PS FOAM,WH | SNA | 1 |
| 7-5 | 3 | | DA63-06337A | COVER-CONV MULTI; GRAND CRU,PP,HB,COOL WH | SA | 2 |
| 7-6 | 4 | A0689 | DA63-07480A | COVER-MULTI REF; 3050_BMF,PP,HB,COOL WHIT | SNA | 1 |
| 8 | 2 | A0270 | DA67-30266K | CAP SCREW; A-TOP,PP,T1.5,HB,BJ750,COOL WH | SA | 1 |
| 9 | 2 | M0300 | DA97-15475A | ASSY CASE VEG-LOW; 3050 | SA | 1 |
| 10 | 2 | | DA97-15743C | ASSY RACK WINE; 3050 | SNA | 1 |
| 10-1 | 3 | | DA75-00313B | RACK WINE; 3050-BMF,-,MSWR,6,503,304,natu | SC | 1 |

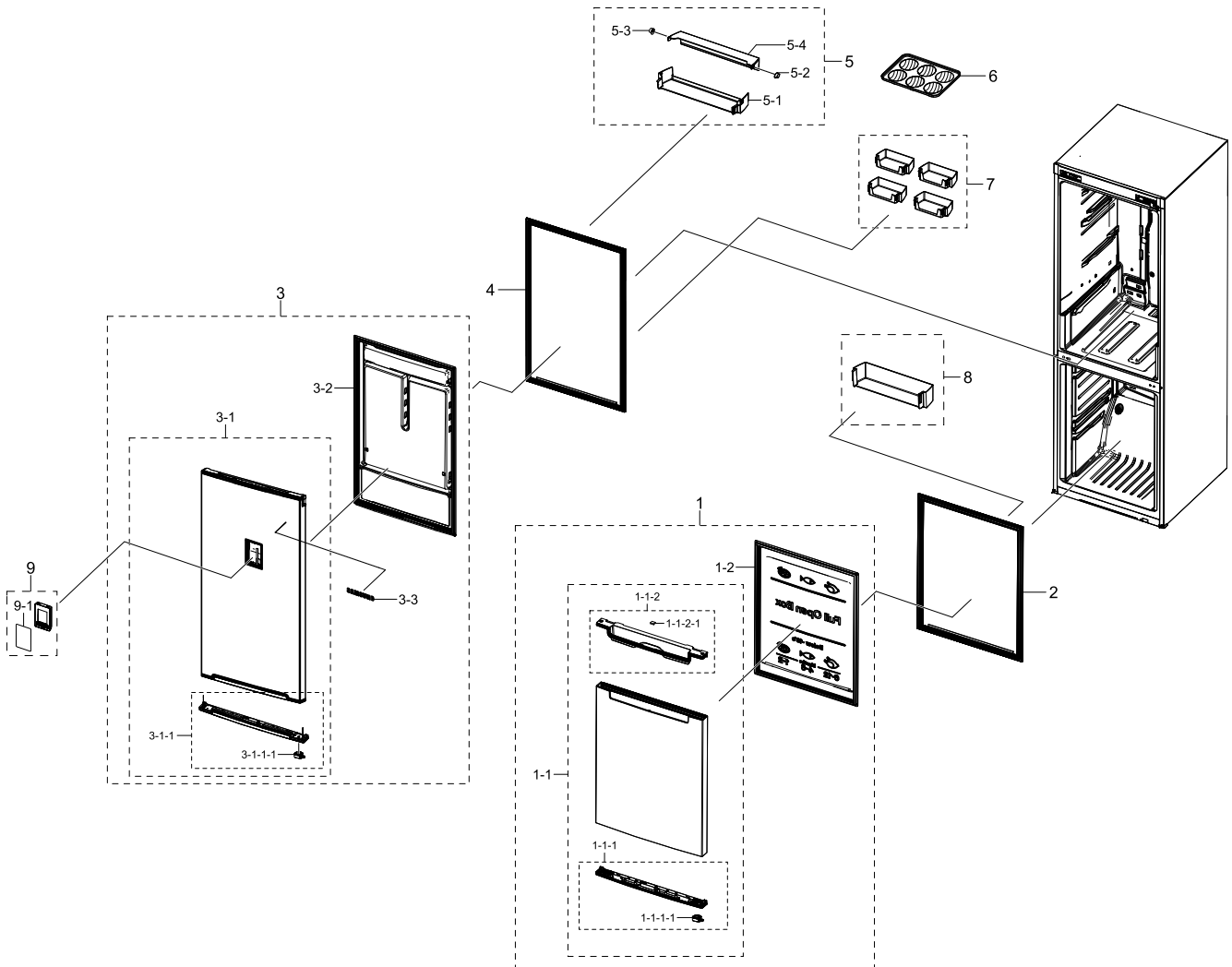
Parts List

| No. | Lvl. | Loc. | Material Code | Description & Specification | SNA | Qty. |
|------|------|-------|---------------|--|-----|------|
| 1 | 2 | A0137 | DA94-01317R | ASSY LINER; 3050-PJT,Relaunch A++ | SNA | 1 |
| 2 | 2 | | DA97-13556J | ASSY CABI FRAME-REAR; 310 A+/A++,GI | SNA | 1 |
| 3 | 2 | G0292 | DA97-13509F | ASSY CABINET; 3050-PJT,RB31,SS/SA,BETTER | SNA | 1 |
| 4 | 2 | Z1128 | DA61-07546B | LEG-FRONT; GRAND CRU,PP,BLACK,RM60,PP Scr | SA | 2 |
| 5 | 2 | | DA61-08932A | CAP CONTROL-PANEL; 3050,ABS,HB,HG-0760GP, | SA | 1 |
| 6 | 2 | G0215 | DA63-07383A | COVER-WIRE DOOR; 3050,BMF,ABS,INOX GRAY,H | SA | 1 |
| 7 | 2 | G0213 | DA63-07384A | COVER WIRE-HINGE R; 3050,ABS,T1.5,HB,INOX | SA | 1 |
| 8 | 2 | | DA66-00073C | WASHER-SHAFT, C; SR-32,35,PVC,T1.0 | SA | 1 |
| 9 | 2 | A0297 | DA67-02684A | CAP SCREW; GRAND CRU,ABS,T1,HB,HG-0760GP, | SA | 2 |
| 10 | 2 | | DA67-03725A | CAP SCREW; 3050,PP,HB,INOX GRAY | SA | 1 |
| 11 | 2 | | DA67-03647A | CAP SPACE-DOOR R; 3050,ABS,HB,HG-0760GPI | SA | 1 |
| 12 | 2 | | DA91-04464A | ASSY INSTALL-ACCESSORY; INOX GRAY | SA | 1 |
| 12-1 | 3 | G0214 | DA63-07385A | COVER WIRE-HINGE L; 3050,ABS,T1.5,HB,INOX | SA | 1 |
| 12-2 | 3 | | DA67-03636A | CAP SPACE-DOOR L; 3050,ABS,HB,HG-0760GPI | SA | 1 |
| 13 | 2 | A0515 | DA97-13557B | ASSY HINGE LOW; 3050(BMF) | SA | 1 |
| 13-1 | 3 | A0247 | DA61-08990A | HINGE-LOW; 3050PJ,PO-SPHC,T3,LMF | SA | 1 |
| 13-2 | 3 | A0516 | DA61-08991B | GUIDE-AUTO CLOSE; 3050PJ,PA66,HB,HG-0760G | SA | 1 |
| 13-3 | 3 | A0518 | DA66-00385A | SHAFT-HINGE; CORE,SWRCH10A,L17,OD6,T6,ZPC | SA | 1 |
| 13-4 | 3 | A0848 | DA81-01532A | SCREW-MACHINE; BH,+,M5,L12.7,ZPC(WHT),SWR | SA | 1 |
| 14 | 2 | M0306 | DA97-13562A | ASSY COVER-PCB PANEL; 290, 310,GI,3050 | SA | 1 |
| 15 | 2 | A0513 | DA97-13564A | ASSY HINGE MID; 3050_BMF | SA | 1 |
| 16 | 2 | G0022 | DA97-13615A | ASSY COVER CONTROL-PANEL; 3050PJT,ASSY,IN | SA | 1 |
| 16-1 | 3 | G0068 | DA34-00043A | SWITCH REED; UL1007 AWG 22,100mm,DEM1-B50 | SA | 1 |
| 16-2 | 3 | A0506 | DA63-07353A | COVER-CONTROL PANEL; 3050,ABS,HB,INOX GRA | SA | 1 |
| 17 | 2 | A0705 | DA97-13567A | ASSY HINGE UPP; 3050_BMF | SA | 1 |
| 17-1 | 3 | A0510 | DA97-13566A | ASSY HINGE UPP-SUB; 3050_BMF | SA | 1 |
| 17-2 | 3 | A0518 | DA66-00385A | SHAFT-HINGE; CORE,SWRCH10A,L17,OD6,T6,ZPC | SA | 1 |

| No. | Lvl. | Loc. | Material Code | Description & Specification | SNA | Qty. |
|------|------|-------|----------------|---|-----|------|
| 18 | 2 | A1018 | DA32-10105F | SENSOR TEMP; 502AT,PX-41C,DKST1329GW,ACE, | SA | 1 |
| 19 | 2 | A0562 | DA39-20389A | ASSY WIRE HARNESS-EARTH; EARTH,ALL,,,,,FR | SA | 1 |
| 20 | 2 | A0273 | 3903-000793 | POWER CORD-AT; H05VV-F 3x0.75mm2,BLK,EU3F | SA | 1 |
| 21 | 2 | | DA60-00279A | FITTING-LOKRING 16; SUM23,16, 11SMnPb30K | SA | 1 |
| 22 | 2 | | DA60-00280A | FITTING-LOKRING 33; SUM23,33, 11SMnPb30K | SA | 1 |
| 23 | 2 | | DA60-00281A | FITTING LOKRING; SUM23,ID5.02,11SMnPb30K, | SA | 1 |
| 24 | 2 | A0328 | DA60-90005A | FASTENER-RIVET; RR19,RR20,RR22,RR26,RT28, | SNA | 1 |
| 25 | 2 | A0669 | DA62-04309C | DRYER; C1220T-H,L118,SINGLE MOUTH,For Cap | SA | 1 |
| 26 | 2 | | DA62-05323A | PIPE CONNECT-SUCTION; 3050,Cu,OD6.35,T0.6 | SA | 1 |
| 27 | 2 | | DA63-07475A | GROMMET-IMMERSION PIPE D; 3050_LMF,NBR,20 | SA | 1 |
| 28 | 2 | | DA72-60040W | SEAL-CUTT RUBBER; TD-PJT,RUBBER,BLACK,T5, | SA | 1 |
| 29 | 2 | A0523 | DA73-10190U | PIPE-CONNECT DISC,B; ALL,Cu,C1220T,OD6.35 | SA | 1 |
| 30 | 2 | A0749 | DA97-13658A | ASSY TRAY-DRAIN WATER; 3050_LMF(RB29/31), | SA | 1 |
| 30-1 | 3 | | DA63-08036B | GROMMET-LOW; PVC,GRAY | SA | 2 |
| 31 | 2 | A0526 | DA97-14151A | ASSY CHASSIS COMP; 3050-PJT,GI-SGCC, T0.8 | SA | 1 |
| 31-1 | 3 | A0861 | DA60-90146A | PIN-CASTER; SR-289-429,MSWR10,L38,ZPC2 | SA | 2 |
| 31-2 | 3 | A0527 | DA61-06202A | CASTER-REAR; GRAND-CRU,PP,NATURAL | SA | 2 |
| 31-3 | 3 | A0526 | DA97-13454A | ASSY CHASSIS COMP; 3050-PJT,T0.8,RB31 | SC | 1 |
| 32 | 2 | | DA97-13649A | ASSY PIPE IMMERRING; 3050_LMF,RL29,31 | SNA | 1 |
| 33 | 2 | | MSV488AL1R/TT4 | CMP,COMP,REFRIGERATOR,R-600A; CMP,COMP,REFRIGERATOR,R-600A | | 1 |
| 34 | 2 | | DA97-13563R | ASSY CABI-BOTTOM; 3050, 3050-2M,A+,A++,No | SNA | 1 |
| 35 | 1 | | DA92-00459Y | ASSY PCB INVERTER; INVERTER,BMF3050,148*9 | SA | 1 |
| 36 | 1 | A0952 | DA92-00735R | ASSY PCB MAIN; BETTER,3050-PJT,148*197,23 | SA | 1 |
| 37 | 2 | | DA60-00018A | SCREW MACHINE; TH,+,M4,L12,PASS,STS304,1 | SA | 1 |
| 38 | 2 | M0111 | DA97-13598A | ASSY RAIL-VEG R; 3050_BMF | SA | 1 |
| 39 | 2 | M0110 | DA97-13599A | ASSY RAIL-VEG L; 3050_BMF | SA | 1 |

4. Door

Exploded View



Parts List

| No. | Lvl. | Loc. | Material Code | Description & Specification | SNA | Qty. |
|---------|------|-------|---------------|---|-----|------|
| 1 | 2 | M0063 | DA91-03682G | ASSY DOOR FOAM-FRE; 310LT,SS M-DOI,,RECES | SA | 1 |
| 1-1 | 3 | | DA97-13634K | ASSY PLATE DOOR-FRE; RECESS HANDLE,NEW VC | SNA | 1 |
| 1-1-1 | 4 | | DA97-13583F | ASSY CAP DOOR-LOW; 3050 BMF,BLACK,FRE | SNA | 1 |
| 1-1-1-1 | 5 | | DA66-01011B | LEVER-AUTO CLOSE; 3050PJ,POM,EBONY BLACK, | SA | 1 |
| 1-1-2 | 4 | | DA97-13586C | ASSY CAP DOOR-FRE UPP; 3050 BMF,I BLACK,R | SNA | 1 |
| 1-1-2-1 | 5 | A0534 | DA61-03769B | MAGNET; SVETA,FERRITE,1600Gauss | SA | 1 |
| 1-2 | 3 | | DA64-04431A | PANEL-DOOR FRE; 3050,RB31,HIPS,COOL WHITE | SNA | 1 |

| No. | Lvl. | Loc. | Material Code | Description & Specification | SNA | Qty. |
|---------|------|-------|---------------|--|-----|------|
| 2 | 2 | A0535 | DA97-13594B | ASSY-GASKET DOOR REF; RB31,3050,GASKET-SE | SA | 1 |
| 3 | 2 | Z1100 | DA91-04900E | ASSY DOOR FOAM-REF; 310,GOOD,SS M-DOI,BAS | SA | 1 |
| 3-1 | 3 | | DA97-13627T | ASSY PLATE DOOR-REF; Recess handle,A+Ener | SNA | 1 |
| 3-1-1 | 4 | A0048 | DA97-13588D | ASSY CAP DOOR-REF LOW; 3050,BMF,I BLACK,R | SNA | 1 |
| 3-1-1-1 | 5 | | DA66-01011B | LEVER-AUTO CLOSE; 3050PJ,POM,EBONY BLACK, | SA | 1 |
| 3-2 | 3 | A0300 | DA64-04428A | PANEL-DOOR REF; 3050,RB31,HIPS,COOL WHITE | SNA | 1 |
| 3-3 | 3 | M0196 | DA64-04020C | MASCOT; ALL,Ni,T0.06,L80 | SA | 1 |
| 4 | 2 | | DA97-12383Y | ASSY-GASKET DOOR; 3050,GRAY,L708.5,W539.5 | SA | 1 |
| 5 | 2 | A0636 | DA97-15689A | ASSY GUARD DAIRY; 3050_BMF,ASSY | SA | 1 |
| 5-1 | 3 | | DA63-07404A | GUARD-DAIRY CASE; 3050,GPPS,TP BLUE,HB,16 | SA | 1 |
| 5-2 | 3 | | DA67-02920A | CAP-HINGE DAIRY R; HERMES,POM,K300,NATURA | SA | 1 |
| 5-3 | 3 | | DA67-02921A | CAP-HINGE DAIRY L; HERMES,POM,K300,NATURA | SA | 1 |
| 5-4 | 3 | | DA63-07405A | GUARD-DAIRY COVER; 3050,GPPS,3,TP BLUE,HB | SA | 1 |
| 6 | 2 | A0656 | DA63-07346A | TRAY EGG; 3050,GPPS,HB,TP BLUE,165N,HI-IM | SA | 1 |
| 7 | 2 | A0153 | DA63-08117A | GUARD VARIETY; RB5000J,GPPS,T3,TP BLUE,16 | SA | 2 |
| 8 | 2 | A0151 | DA63-08118A | GUARD BOTTLE; RB5000J,GPPS,T3,TP BLUE | SA | 1 |
| 9 | 2 | A0626 | DA97-13300Y | ASSY COVER CONTROL; RB5000J,3050-2M, Exte | SA | 1 |
| 9-1 | 3 | | DA64-05039N | INLAY-CONTROL; RB5000J,PC,3050-2M, Extern | SA | 1 |