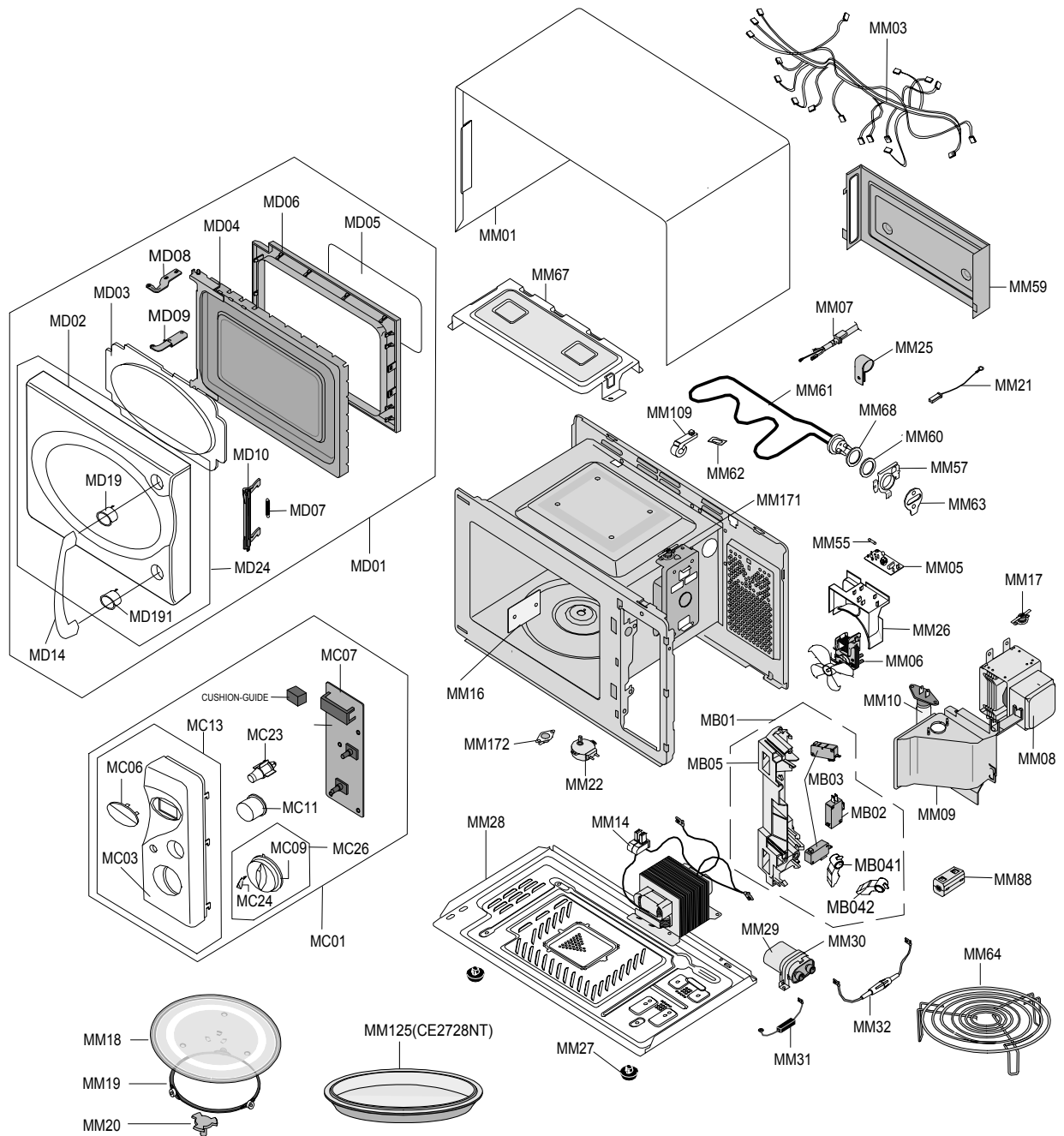


# 7. Exploded Views and Parts List

## 7-1 Exploded Views



## 7-2 Main Parts List

No.	Code No.	Description	Specification	Q'ty	Remark
MB01	DE96-00120B	ASSY BODY LATCH	M1717N,NC2000(HANDLE)	1	
MB02	3405-000175	SWITCH-MICRO	250V,15A,200gf,SPST-NO	1	
MB03	3405-000178	SWITCH-MICRO	250V,15A,200gf,SPST-NO	2	
MB041	DE66-00093A	LEVER-SWITCH(A)	NC2000,PP-TH53,-,-,-,NTR,HANDLE	1	
MB042	DE66-00094A	LEVER-SWITCH(B)	NC2000,PP-TH53,-,-,-,NTR,HANDLE	1	
MB05	DE72-00137A	BODY-LATCH	NC2000(0.6/0.8/1.2),PP,-,-,-,WHT,-	1	
MM01	DE70-00184P	PANEL-OUTER	MW850WA,C/STEEL,T0.5,P/WHT,NC2-0.8CU.FT	1	
MM03	DE39-00162B	WIRE HARNESS-A	CE2727N,-,230V50HZ,-,-,-,NC2000	1	
MM05	DE96-00010A	ASSY NOISE FILTER	SN-3WED,250V10A,3W NO-INRUSH TC,-	1	
MM06	DE96-00031A	ASSY-MOTOR FAN	SMF-3RDEA,230V50HZ,2400RPM,M1733,-	1	
MM07	DE39-20058C	ASSY POWER CORD	KKP-4819D/B232,250V16A,L1700,G	1	
MM08	OM75P(31)ERH	ASSY-MAGNETRON:OM75P		1	
MM09	DE71-60457B	COVER-AIR	3RD-0.7(BTM),PP,-,-,-,-,-	1	
MM10	4713-001031	LAMP-INCANDESCENT	230V,173mA,40W,ORG,-,-,25x69mm	1	CV/AIR
MM109	DE74-80062A	STOPPER-HEATER	3RD-W,SECC,T0.8xW70xL70,-,-,-,-	1	
MM125	DE97-00108A	ASSY TRAY-BROILER	AL,TO.8,265,-,-	1	CE2827NT
MM14	DE26-00014B	TRANS-H.V	SHV-175ECR,230V,50HZ,2290V/3.45V,-,-,H,-	1	
MM16	DE71-00159A	COVER-CEILING	CN2835,MICA SHEET,T0.3,W114,L56,-,-	1	
MM17	DE47-20009A	THERMOSTAT	PW2N-520PB,160/60,250V/7.5A,H,	1	MG-TCO
MM171	DE47-00002B	THERMOSTAT	PW2N,-,-,100,110,-,-,-,187H,30.0	1	GRL-TCO
MM172	DE47-20010A	THERMOSTAT	PW-2N(120/60)187Y,250V7.5A,120	1	CAV-TCO
MM18	DE74-20102D	TRAY-COOKING	GLASS,T6,-,-,890g	1	
MM19	DE97-00193A	ASSY-GUIDE ROLLER	NC2000 0.6,T2*P1198(15PI),-,-	1	
MM20	DE67-60002A	COUPLER	PPS,5GR,BRN,M97G45,-,-,-,-	1	
MM21	DE39-40409A	WIRE HARNESS-E	230V50HZ,M9G45,CTW,-,-,-	1	H/EART
MM22	DE31-10154A	MOTOR-SYNCHRONOUS	M2HJ49ZR02,ST-16,50/60HZ,-	1	
MM25	DE65-20014A	CABLE CLAMP	-,-,-,NY-66,-,DA-6N	1	P-CORD
MM26	DE71-00148A	COVER-BLOWER	MW850WA,PP,T1.5,NTR,NC2000(0.8CUFT)	1	
MM27	DE61-40066A	FOOT	-,PP,-,BLK,-,-,-	2	
MM28	DE80-00023B	BASE-PLATE	CE2877N,-,T0.6,-,-,NC2000,0.8CUFT	1	
MM29	2501-001016	C-OIL	950nF,2.1KV,BK,35x54x80,20mm	1	
MM30	DE61-00139A	BRACKET-HVC	NC2000,SECC,T0.8,-,-,-,0.6/0.8/1.2CUFT	1	
MM31	DE59-00002A	DIODE-H.V	ESJC13-12B,12KV,MWO ALL,-	1	
MM32	DE91-70061B	ASSY-H.V.FUSE	THV060T-0750-H,5KV/0.75A,RED	1	
MM55	3601-000448	FUSE-CARTRIDGE	250V,10A,SLOW-BLOW,CERAMIC,6.35x31.8mm	1	
MM57	DE61-50576A	BRACKET-HEATER	-,STS430,T0.5,W70,L70,-,-	1	
MM59	DE71-60451A	COVER-BACK	3RD-0.7,SECC,T0.5,W115,L332,-,-,-	1	
MM60	DE63-20017A	GASKET-HEATER	BRASS,T1.5,OD30.5,ID22.5,-,-,-	1	
MM61	DE47-00004A	HEATER-GRILL	SHG-2733E,-,-,-,-,-,230V1080W	1	
MM62	DE61-70060A	SPRING-PLATE	SK-5,T0.5,-,-,-,-,-	1	
MM63	DE61-30008A	SUPPORTER-HEATER	ALUMINA,T12,CE745G,-,-,-,-	1	
MM64	DE74-70071D	RACK-WIRE	MSWR10,PI3,0.7/NC2000,D230,H85,-,-	1	CE2827N
MM64	DE97-00106A	ASSY-WIRE RACK	CE2713T,3RD-0.7,-,-,-,-	1	CE2827NT
MM67	DE61-00143A	BRACKET-UPPER	MW850WA,SECC,T0.5,-,-,-,NC2000(0.8CUFT)	1	
MM68	6031-001424	WASHER-PLAIN	PTFE,-,ID22.2,OD28,T1.7,WHT	1	
MM88	DE73-90027B	FERRITE	RU65(RU15*28.6*6.5),-,M2L(Fe2O3+Ni+Zn) ,-	1	

## 7-3 Control & Door Parts List

No.	Code No.	Description	Specification	Q'ty	Remark
MC01	-	ASSY CONTROL-BOX	-,CE2827N,P/WHT,-	1	S.N.A
MC03	DE72-00144G	CONTROL-PANEL	CE2827N,ABS,-,-,-,P/WHT,-	1	
MC06	DE64-00095A	WINDOW-DISPLAY	SAN,-,M1727/M1927,-	1	
MC07	RC-EASY3R-05	ASSY PCB PARTS:CE272		1	
MC09	DE64-00097B	KNOB-POWER	CE2727/CE2927,ABS,-,-,POWER,-,-,-	1	
MC11	DE64-00096A	KNOB-TIMER	ABS,-,-,M1727/M1927,-,-,-,-	1	
MC13	DE94-00396G	ASSY CONTROL-PANEL	-,CE2827N,P/WHT,-	1	
MC23	DE64-00100A	BUTTON-CLOCK	ABS,-,-,M1727/M1927,CLOCK	1	
MC24	DE64-00113A	KNOB-CAP	ABS,C-BLUE,-,M1727/M1927,-,-,-,-	1	
MC26	DE97-00165B	ASSY-KNOB POWER	CE2727,POSERKJEONG,WHT+BLU,-	1	
MD01	DE94-00503F	ASSY DOOR	CE2827N,CE2827NT/XEF,P-WHT,SEF,-	1	
MD02	DE64-00092A	DOOR-A	ABS(HR0370),-,-,-,P-WHT,M1727/XEF,-,-,-	1	
MD03	DE63-00017A	SCREEN-DOOR	SAN,-,-,-,SMOG,M1727/M1777,-	1	
MD04	DE94-00351D	ASSY DOOR-E(COATING)	CE2877N/XEC,COATING/2ND,NC2000(0.8CUFT)	1	
MD05	DE64-00221D	FILM-DOOR	-,T0.15,W264*L143,-,-,-,NC08(GRILL)	1	
MD06	DE64-40008B	DOOR-C	PP,T1.5,BLK,CE745G,-,-,-	1	
MD07	DE61-00198A	SPRING-KEY	M1877,HSWR,D6,-,-,23 1/4,-,T0.7,-,-,NC2000(0.7)	1	
MD08	DE61-00145A	HINGE-UPPER	NC2000(GRILL),SCP,T2.0,-,-,ZPC3,-,-	1	
MD09	DE61-00146A	HINGE-LOWER	NC2000,SCP,T2.0,-,-,ZPC3,GRILL,-	1	
MD10	DE64-00211A	DOOR-KEY	NC2000(0.6/0.8/1.2),PP,-,BLK,-,-,HANDLE-TYPE	1	
MD14	DE64-00099A	HANDLE-DOOR	ABS,-,-,-,SILVER,M1727/M1927,-,-	1	
MD19	DE64-00093A	HANDLE-RING(A)	ABS(HR0370),D-GRY(G63328),POSERKJEONG,-	1	
MD191	DE64-00094A	HANDLE-RING(B)	ABS(HR0370),D-GRY(G63328),POSERKJEONG,-	1	
MD24	DE94-00311K	ASSY DOOR-A	M1727/XEC,AMF,WHITE,SESA,AMFO	1	

S.N.A : SERVICE NOT ASSEMBLY

## 7-4 Standard Parts List

Code No.	Description	Specification	Q'ty	Remark
DE60-10012A	SCREW-TAP TITE	-,SWR10,M4,L10,TH,+,-,3,ZPC2,-	1	N/FILTER
DE60-10012A	SCREW-TAP TITE	-,SWR10,M4,L10,TH,+,-,3,ZPC2,-	1	P-CORD
DE60-10018A	SCREW-ASSY MACHINE	-,WS,MSWR10,SN1,PH,M4X0.7P,-,8,-,-	2	BKT-HEATER
DE60-10063A	SCREW-TAP TH	-,-,FEFN,-,TH,M4,-,L12,-,-	1	P/OUTER
DE60-10080B	SCREW-WASHER	-,2S,SWRCH18A,ZP2,PH,PI5,-,L10,-,-	4	HVT
DE60-10080B	SCREW-WASHER	-,2S,SWRCH18A,ZP2,PH,PI5,-,L10,-,-	4	MGT
DE60-10082H	SCREW-A	-,,-,-,2S-4X12,TOOTHED,-,-,-,-	2	B-LATCH
DE60-10082H	SCREW-A	-,,-,-,2S-4X12,TOOTHED,-,-,-,-	3	B-PLATE
DE60-10082H	SCREW-A	-,,-,-,2S-4X12,TOOTHED,-,-,-,-	1	BKT-UPPER
DE60-10082H	SCREW-A	-,,-,-,2S-4X12,TOOTHED,-,-,-,-	1	C-BLOWER
DE60-10082H	SCREW-A	-,,-,-,2S-4X12,TOOTHED,-,-,-,-	1	CON-BOX
DE60-10082H	SCREW-A	-,,-,-,2S-4X12,TOOTHED,-,-,-,-	1	COVER-AIR
DE60-10082H	SCREW-A	-,,-,-,2S-4X12,TOOTHED,-,-,-,-	4	OUT-PANEL
DE60-10098A	SCREW-ASSY TAP TITE	-,GLD,SWRCH18A,ZPC2,PH,TC,-,M4X8,WT,-	1	BOTT-TCO
DE60-10098A	SCREW-ASSY TAP TITE	-,GLD,SWRCH18A,ZPC2,PH,TC,-,M4X8,WT,-	1	CVT-TCO
DE60-10098A	SCREW-ASSY TAP TITE	-,GLD,SWRCH18A,ZPC2,PH,TC,-,M4X8,WT,-	1	D-MOTOR
DE60-10098A	SCREW-ASSY TAP TITE	-,GLD,SWRCH18A,ZPC2,PH,TC,-,M4X8,WT,-	2	MGT-TCO
DE60-10195A	SCREW-STAR POLE	-,SWCH18A,4,12,TH,*,-,2,ZNC,-	2	C-BACK
DE60-20063A	BOLT-FLANGE	M4,10,ZPC3,YEL,MSWR,-,-,-,-	2	H/LOWER
DE60-20063A	BOLT-FLANGE	M4,10,ZPC3,YEL,MSWR,-,-,-,-	2	H/UPPER
DE60-30016A	NUT-FLANGE	M4,MSWR10,-,-,-,-,-,-	2	F-MOTOR
DE60-10088A	SCREW-TAP PH	-,-,FEFZY,PLAIN,PH,M3,-,L8,-,-	5	
DE60-10069A	SCREW-TAP TH	-,-,FRFZY,-,TH,M4,-,L10,-,-	2	
DE60-10012A	SCREW-TAP TITE	-,SWR10,M4,L10,TH,+,-,3,ZPC2,-	1	B/COVER
DE60-10098A	SCREW-ASSY TAP TITE	-,GLD,SWRCH18A,ZPC2,PH,TC,-,M4X8,WT,-	1	