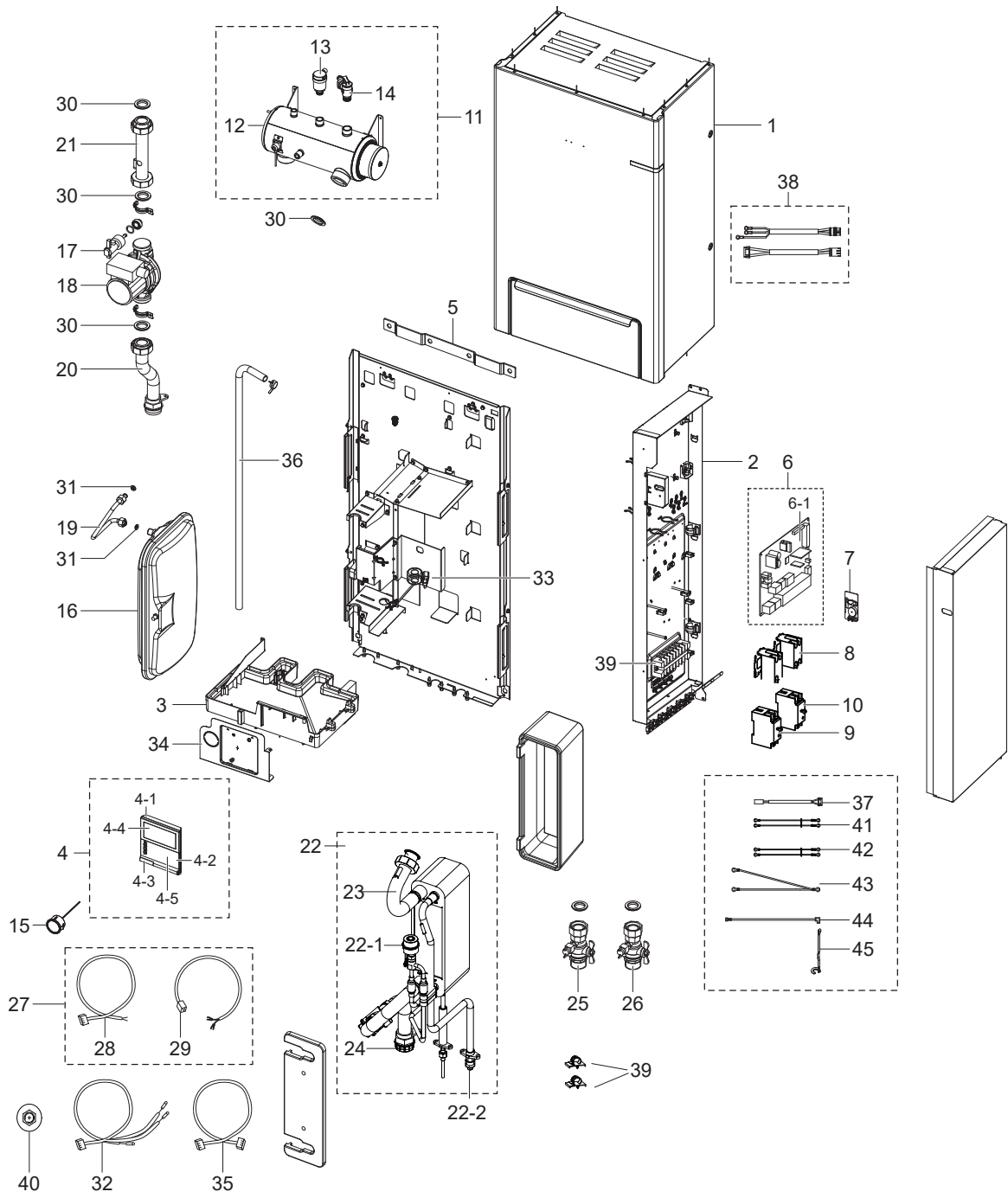


■ AE160MNYDGH



Parts List : AE160MNYDGH

No.	Code No.	Description	Specification	QTY	SA/SNA
1	DB90-05348B	ASSY CABI FRONT	ASSY	1	SA
2	DB90-05389B	ASSY CABI BASE	AE090JNYDEH/EU	1	SA
3	DB91-01070A	ASSY DRAIN PAN	NH160PHXEA,ASSY	1	SA
4	DB93-11251L	ASSY WIRED REMOCON	NF-0,ENGLISH,103.0*51	1	SNA
4-1	DB61-04652A	CASE-BOTTOM	WIRED REMOCON,ABS,T1.5,CREAM	1	SA
4-2	DB63-02867A	COVER-PCB	AWR-WE10,ABS,HB,CREAM WHITE,HG	1	SA
4-3	DB61-04729A	HINGE-DOOR	AWR-WE10,SUS,WIRED REMOCON	1	SA
4-4	DB92-02837B	ASSY PCB MAIN	EHS 2LINE WRMC,NASA,110*93	1	SA
4-5	DB95-04690A	ASSY THEMISTOR-IN	AWR-WE10,Wired remote	1	SA
5	DB61-04402A	BRACKET-WALL MOUNT	NH160PHXEA,SGCC-M,3.0	1	SA
6	DB92-03653B	ASSY PCB MAIN	MAIN,EHS,242*160,230V,12V,	1	SA
6-1	DB93-12483A	ASSY PCB SUB-EEPROM	SUB,DVMPPLUS4 UP,20*2	1	SA
6-2	DB92-02793A	ASSY FUNCTION	COMM,DVM NASA_CST,Y	1	SA
7	DB93-08868A	ASSY PCB SUB-DISPLAY	SUB,NH160PHXEA,70*3	1	SA
8	DB35-00044A	RELAY-ETC	XMC0-253IBBC00F,208-220V 50Hz,	3	SA
9	DB35-00109A	RELAY-ELCB	SG-52NH,220~240V 50/60Hz,2P,2	1	SA
10	DB35-00121A	RELAY	SG-54NH,380~460V 50/60Hz,4P,380V,4	1	SNA
11	DB95-04413C	ASSY-HEATER UNIT 6KW 3PH	AEN160YDGH,A,SSEC EHS GEN4 SPLIT PJT	1	SA
12	DB95-04342C	ASSY HEATER-6KW	EHS2-PJT,400V/6KW	1	SNA
13	DB96-13493A	ASSY-AIR VENT VALVE	0.6-15% m ³ /h at 1.5	1	SNA
14	DB96-13494A	ASSY-PRESSURE RELIEF VALVE	PURE WATER,PF	1	SNA
15	DB96-13830A	ASSY-MANOMETER	0~4MPa,BOURDON,G1/4B,STRE	1	SA
16	DB96-13802A	ASSY-EXPANSION VESSEL	PURE WATER,G3/8",A	1	SA
17	DB96-13834B	SWITCH FLOW	DC5V,1,INSERT, 12L/min	1	SA
18	DB96-21145A	ASSY WATER PUMP	HEAD 9.0M,RS25-9,230V, 50Hz/60Hz	1	SA
19	DB96-13458A	ASSY TUBE-EXPANSION TANK	NH160PHXEA,ASSY	1	SA
20	DB96-13459A	ASSY TUBE-WATER OUT	NH160PHXEA,ASSY	1	SA
21	DB96-13460A	ASSY TUBE-WATER PUMP IN	NH160PHXEA,ASSY	1	SA
22	DB96-13465C	ASSY TUBE WATER	ASSY	1	SA
22-1	DB62-11474B	VALVE GEAR EXPAN	,4.0,2000,1000	1	SNA
22-2	DB60-30010B	FASTENER-NUT FLARE	BRASS	1	SA
23	DB96-13463A	ASSY TUBE-WATER HEATER IN	NH160PHXEA,ASS	1	SNA
24	DB96-13464A	ASSY TUBE-WATER PHE IN	NH160PHXEA,ASSY	1	SNA
25	DB96-13833A	ASSY-SERVICE VALVE	RIGHT TYPE,PF 1-1/4",	1	SA
26	DB96-13833B	ASSY-SERVICE VALVE	LEFT TYPE,PF 1-1/4",P	1	SA
27	DB97-15795B	ASSY ACCESSORY	AE090JNYDEH/EU	1	SNA
28	DB93-13255A	ASSY CONNECTOR WIRE	EHS_GEN3_MONO,CONTRO	1	SA
29	DB95-05023A	ASSY THEMISTOR-WATER TANK	EHS_GEN3_MONO,	1	SA
30	DB73-00560A	RUBBER-PACKING ID30	NH160PHXEA,EPDM	4	SNA
31	DB73-00559A	RUBBER-PACKING ID8	NH160PHXEA,EPDM	2	SNA
32	DB95-04324A	ASSY THEMISTOR-OUTLET	EHS HYDRO UNIT,SSE	1	SA
33	DB90-05722A	ASSY BRACKET-PHE	EHS2,ASSY	1	SA
34	DB90-05747A	ASSY BRACKET	EHS2,ASSY	1	SA
35	DB93-15534A	ASSY CONNECTOR WIRE-COMM	2,2095,22,RED,Y	1	SA
36	DB67-01048A	DRAIN HOSE	EHS2,EPDM,T2.2,BLACK	1	SA
37	DB32-00213A	SENSOR TEMP	103AT,MIXING_VALVE,15000	1	SA
39	DB61-00996A	HOLDER-LOCK CLAMP A	W-P/J,PA,NATURAL,V0,	2	SC
40	DB60-30028A	NUT-FLANGE	HWH,M8,ZPC(WHT),SWRCH18A,P1.2	1	SA
41	DB93-08790A	ASSY CONNECTOR WIRE	2,1015,12,SKY,DR3.5-	2	SA
42	DB93-08790C	ASSY CONNECTOR WIRE	2,1015,12,SKY,DR3.5-	2	SA
43	DB93-08805A	ASSY CONNECTOR WIRE-EARTH	1,1015,18,YEL/	2	SA
44	DB93-15042A	ASSY CONNECTOR WIRE-AC SIGNAL	1,1015,18,	1	SA
45	DB81-00635A	SPRING ETC-SENSOR	DVM-SYSTEM,STS304,R2.5	6	SA