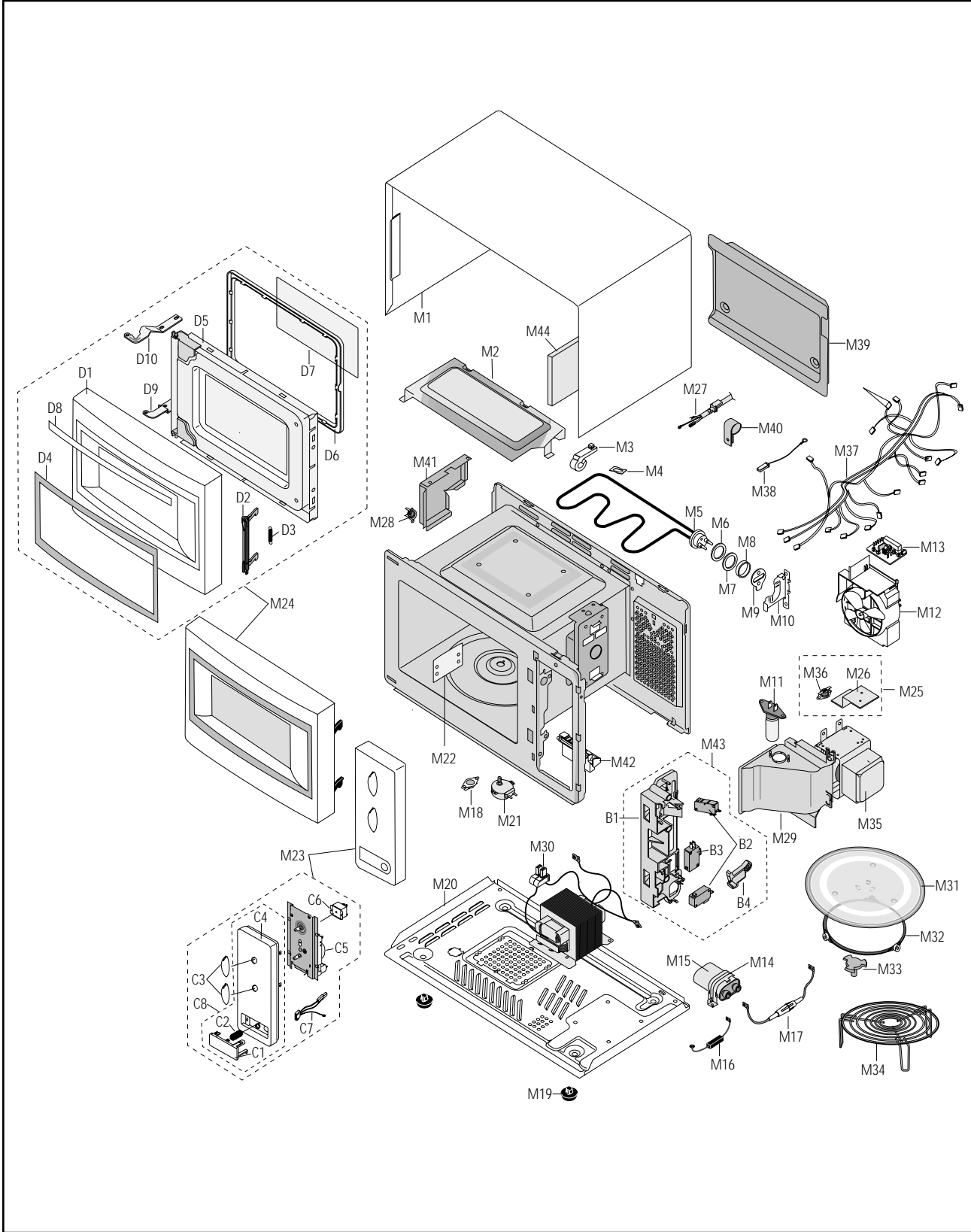


7. Exploded Views and Parts List

7-1 Exploded Views



7-2 Main Parts List

Ref. No.	Parts No.	Description/Specification	Q'ty	Remarks
M 1	DE70-30001A	PANEL-OUTER;SECC T0.6 360 1128 EPOXY-COA	1	●
M 2	DE61-50017A	BRACKET-UPPER;SECC1 T0.6 340 216	1	
M 3	DE61-30006A	SUPPORTER-HEATER;ALUMINA 5G 2ND-W/P	1	
M 4	DE61-70060A	SPRING-PLATE;SK-5 T0.5	1	
M 5	DE47-70031G	HEATER-GRILL;D6.6 230V1280W M9G45 SJH	1	● ▲
M 6	DE63-20017A	GASKET-HEATER;BRASS T1.5 OD30.5 ID22.5	1	
M 7	DE60-40009B	WASHER-TEFLON;SLOT ID22.2 OD28 T1.2 TEFL	1	
M 8	DE61-50021A	BRACKET-FLANGE;SECC1 T0.8 32 32	1	
M 9	DE61-50027B	BRACKET-HEATER;SECC T1.0 W51 L55 CE945GF	1	
M 10	DE61-50347A	BRACKET-EARTH;BSS2-A T1.0 W35 L43 MBGF45	1	
M 11	4713-001031	LAMP-INCANDESCENT;230V,173mA,40W,ORG,-,-,25	1	
M 12	DE31-10156A	MOTOR-FAN;SMF-945EA 230/50 2400 M97G45	1	
M 13	DE91-40095A	ASSY NOISE FILTER;SN-E10D(N) 250V 10A *2	1	
M 14	DE61-50106A	BRACKET-HVC;SECC T0.8 W31 L125.8	1	
M 15	2501-001030	C-OIL;1.1uF,2100V,BK,35x54x95,20mm	1	
M 16	DE59-40001A	DIODE-H.V;HVR-1X-32B-12	1	● ▲
M 17	DE91-70061A	ASSY-H.V.FUSE;THV060T-0800-H 5KV/0.8A WH	1	
M 18	DE47-20008A	THERMOSTAT;PW2N-52JC 100/60 250V/7.5A H	1	
M 19	DE61-40017A	FOOT;PP(A353) BLK MW5630T	2	
M 20	DE80-10001A	BASE-PLATE;SGCC T0.8 345 565	1	
M 21	DE31-10154A	MOTOR-DRIVE;M2HJ49ZR02,ST-16 21V 5/6	1	
M 22	DE71-60382A	COVER-CEILING;MICASHEET T0.5 70 133	1	
M 23		ASSY CONTROL-BOX;230V50HZ CE935G(SSW) 900W	1	● ▲
M 24		ASSY DOOR;BUTTON WHT CE945GR(SBTW) RUSSIA	1	● ▲
M 25	DE91-70101C	ASSY-THERMOSTAT;ME5574W 160/60 187-HORIZ	1	
M 26	DE61-50490A	BRACKET-TCO;SECC1 T0.6 34 58	1	
M 27	DE39-20058E	ASSY POWER CORD;KKP4819D/B232 230V/16A L	1	●
M 28	DE47-20161A	THERMOSTAT;PW2N(120/110)187Z23. 250V/7.5	1	
M 29	DE71-60016A	COVER-AIR;PP 2 WHT M945/MB45	1	
M 30	DE26-10100A	TRANS-H.V;SHV-945EG1 230V 2280V/3.15V 50	1	● ▲
M 31	DE74-20015B	TRAY-COOKING;GLASS T6.0 PI318 1050G MW56	1	
M 32	DE92-90189D	ASSY-GUIDE ROLLER;D19 STD	1	
M 33	DE67-60075A	COUPLER;PPS 7G BRN M97G45	1	
M 34	DE74-70003B	RACK-WIRE;MSWR3 3 3 290 125 SNC2	1	
M 35	DE03-30035A	MAGNETRON;OM75PH((31)ESS	1	● ▲
M 36	DE47-20009A	THERMOSTAT;CS-7SA(160/60)187Y 250V7.5A 1	1	
M 37	DE39-40569A	WIRE HARNESS-A;230V50HZ CE935G/CE73	1	
M 38	DE39-40409A	WIRE HARNESS-E;230V50HZ M9G45 CTW	1	
M 39	DE71-60015A	COVER-BACK;SECC1 T0.5 353 526 CE945G	1	
M 40	DE65-20014A	CABLE CLAMP;DA-6N NY-66	1	
M 41	DE72-60005A	GUIDE-AIR;SECC1-P T0.5 210 225	1	
M 42	DE66-90013A	LEVER-DOOR;POM(F20-01) NTR MW5630T	1	
M 43	DE93-20001A	ASSY BODY LATCH;2ND-W1 M97G45/M9745	1	
M 44	DE63-90035G	CUSHION-RUBBER;DFA20 T2 W190 L100 BLK	1	

● : Option Parts

▲ : Warning

▲ : Electrostatically Sensitive Devices

7-3 Door Parts List

Ref. No.	Parts No.	Description/Specification	Q'ty	Remarks
D 1	DE64-40011A	DOOR-A;RESIN-ABS(HR-0370U) T2.5 M945(IDE	1	●
D 2	DE64-40006A	DOOR-KEY;POM(TC3005) T2.0 12GR BLK CE9	1	●
D 3	DE61-70032A	SPRING-KEY;ES HSWR PI0.6 D5.4 L25 MW8640	1	
D 4	DE67-20003D	SCREEN-DOOR;PC T1.5 L197.4 W401.5 WHT(GRI	1	
D 5	DE92-50127H	ASSY DOOR-E;COATING BLACK T0.8	1	● ▲
D 6	DE64-40012A	DOOR-C;RESIN-PP(TB53) T2.0 CE945GF BLA	1	●
D 7	DE01-00002A	FILM-DOOR;PET T0.15 275 175 NTR CE945GF	1	●
D 8	DE02-00125A	TAPE-DOUBLE FACE;ACRYL T0.45 W9 WHT WF103	1	●
D 9	DE61-80003A	HINGE-LOWER;SCP1 T2.3 26 77 ZPC3 WHT CHR	1	
D 10	DE61-80002A	HINGE-UPPER;SCP1 T2.3 26 77 ZPC3 WHT CHR	1	

7-4 Control Parts List

Ref. No.	Parts No.	Description/Specification	Q'ty	Remarks
C 1	DE66-20006A	BUTTON-PUSH;RESIN-ABS(HR-0370U) P/WHT M9	1	●
C 2	DE61-70076A	SPRING-BUTTON;HSWR PI0.6	1	
C 3	DE64-10123A	KNOB;ABS PURE-WHT M97G35	2	● ▲
C 4	DE72-70008B	CONTROL-PANEL;ABS(HR0370U) WHT T2.5 CE935G	1	●
C 5	DE45-10076A	TIMER-ASSY;TMFK60MTB1 220V/240V 310-GRIL	1	● ▲
C 6	3501-000309	RELAY-POWER;CHP11-A240S-250V15A 240V,375	1	
C 7	DE39-40333B	WIRE HARNESS-B;230V50HZ CE735G/CE93	1	
C 8	DE93-30535B	ASSY CONTROL-PANEL;CE935G(SSW) WHT	1	

7-5 Body Latch Parts List

Ref. No.	Parts No.	Description/Specification	Q'ty	Remarks
B 1	DE66-40001A	LATCH-BODY;POM(F20-02) 40GR NTR	1	●
B 2	3405-000178	SWITCH-MICRO;VP-533A-OF-PS(T85) 250V,15A	2	
B 3	3405-000175	SWITCH-MICRO;VP-531A-OF(T85) 250V,15A,20	1	
B 4	DE66-90001A	LEVER-SWITCH;P.O.M(F20-02) 2 6 NTR 2ND-W	1	●

7-6 Standard Parts List

Parts No.	Description / Specification	Q'ty	Remarks
DE60-10033A	SCREW-TH;TH + M4 L10 MSWR10 FEFZY	1	RELAY
DE60-10069A	SCREW-TAP TH;TH M4 L10 FRFZY	4	TIMER
DE60-10012A	SCREW-TAP TITE;TH + 3 M4 L10 SWR10 ZPC2	1	BASE
DE60-10069A	SCREW-TAP TH;TH M4 L10 FRFZY	1	CV/AIR
DE60-10122A	SCREW-TAP TH;TAP TH 2-4X8 FE FN	2	C-CEIL
DE60-10082A	SCREW-A;M4 L12 2S TOOTHED	5	O/PANE
DE60-10082A	SCREW-A;M4 L12 2S TOOTHED	2	BASE
DE60-10082A	SCREW-A;M4 L12 2S TOOTHED	2	CON-PA
DE60-10082C	SCREW-TAP TH;TH M4 L8 MSWR3 ZPC YWL WS	1	B-HVC
DE60-10098A	SCREW-ASSY TAPTITE;PH TC M4X8 SWRCH18A Z	1	CV-TCO
DE60-10098A	SCREW-ASSY TAPTITE;PH TC M4X8 SWRCH18A Z	2	MGT-TC
DE60-10098A	SCREW-ASSY TAPTITE;PH TC M4X8 SWRCH18A Z	2	MO/DRI
DE60-10080A	SCREW-WASHER;M5 L12 2S	4	HVT
DE60-10080A	SCREW-WASHER;M5 L12 2S	4	MGT
DE60-10082A	SCREW-A;M4 L12 2S TOOTHED	2	B/LATC
DE60-10033A	SCREW-TH;TH + M4 L10 MSWR10 FEFZY	2	HI-UPP
DE60-10033A	SCREW-TH;TH + M4 L10 MSWR10 FEFZY	2	HI-LOW
DE60-10012A	SCREW-TAP TITE;TH + 3 M4 L10 SWR10 ZPC2	1	NO-FIL
DE60-10012A	SCREW-TAP TITE;TH + 3 M4 L10 SWR10 ZPC2	1	P-CO-E
DE60-10013A	SCREW-ASSY TAP;TH 2S 4 L12 MSWR3 ZPC3 FI	1	C-BLOW
DE60-10018A	SCREW-ASSY MACHINE;PH M4X0.7P 8 MSWR10 S	2	B/EATH
DE60-10069A	SCREW-TAP TH;TH M4 L10 FRFZY	3	B/UPP
DE60-10045A	SCREW-TAP PH;PH M3 L6 FEFZY	1	AR-TCO
DE60-10024A	SCREW-PH;PH + M4 L8 MSWR10 ZPC3	2	B/HEAT
DE60-10072A	SCREW-TAP TH;TH M4 L16 FEFZY 2-SLOT	1	CB-CMP