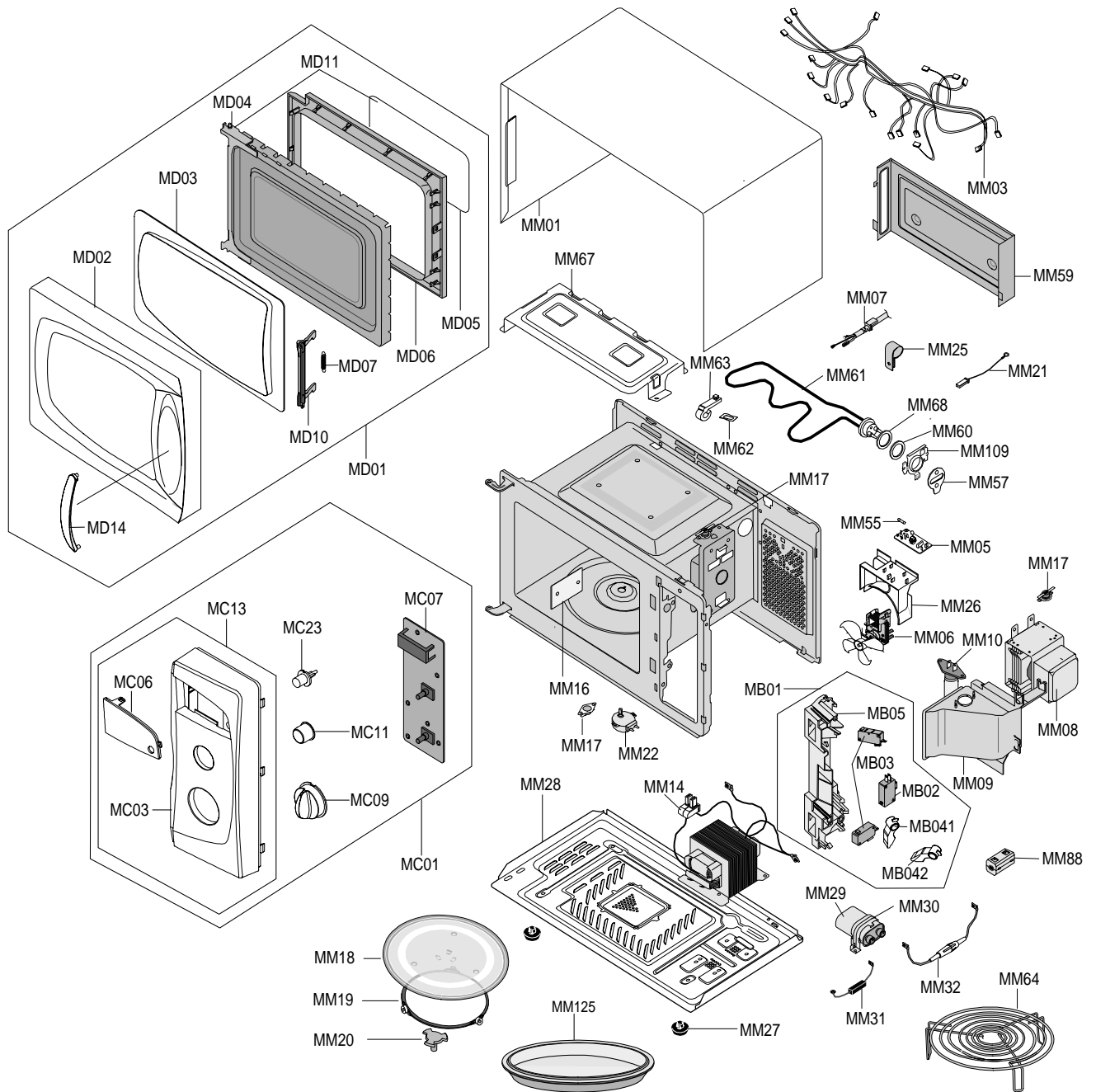


# 7. Exploded Views and Parts List

## 7-1 Exploded Views



## 7-2 Main Parts List

No.	Code No.	Description	Specification	Q'ty	Remark
MB01	DE96-00120B	ASSY BODY LATCH	M1717N,NC2000(HANDLE)	1	
MB02	3405-000175	SWITCH-MICRO	250V,15A,200gf,SPST-NO	1	
MB03	3405-000178	SWITCH-MICRO	250V,15A,200gf,SPST-NO	2	
MB041	DE66-00093A	LEVER-SWITCH(A)	NC2000,PP-TH53,-,-,-,N	1	
MB042	DE66-00094A	LEVER-SWITCH(B)	NC2000,PP-TH53,-,-,-,N	1	
MB05	DE72-00137A	BODY-LATCH	NC2000(0.6/0.8/1.2),PP,-,-,-,	1	
MM01	DE70-00184P	PANEL-OUTER	MW850WA,C/STEEL,T0.5,-,-,-,P	1	CE282DN,CE282DNT
MM01	DE70-00184G	PANEL-OUTER	NC-2000,SECC,T0.5,CREAM-YELLO	1	CE282DNT-YELLOW
MM03	DE39-00162B	WIRE HARNESS-A	CE2727N,-,-,-,-,-,-,-,-,-	1	
MM05	DE96-00010C	ASSY NOISE FILTER	SN-3WED(12),250V12A,EU	1	
MM06	DE96-00031A	ASSY-MOTOR FAN	SMF-3RDEA,230V50HZ,2400RP	1	
MM07	DE39-20058C	ASSY POWER CORD	KKP-4819D/B232,250V16A,L	1	
MM08	OM75P(31)ERH	ASSY-MAGNETRON	OM75P(31)ERH	1	
MM09	DE71-60457B	COVER-AIR	3RD-0.7(BTM),PP,-,-,-,-,-,-	1	
MM10	4713-001046	LAMP-INCANDESCENT	240V,104mA,25W,ORG,-,-	1	CV/AIR
MM109	DE74-80062A	STOPPER-HEATER	3RD-W,SECC,T0.8xW70xL70,-	1	
MM125	DE97-00108A	ASSY-TRAY BROILER	CE2713T,3RD-0.7,-,-,-,-	1	CE282DNT,CE282DNT-YELLOW
MM14	DE26-00080A	TRANS-H.V	SHV-EURO2,230V,50HZ,2340V/3.3V	1	
MM16	DE71-00159A	COVER-CEILING	CN2835,MICA SHEET,T0.3,W11	1	
MM17	DE47-00002B	THERMOSTAT	PW2N,-,-,100,110,-,-,-,187H,3	1	GRL-TCO
MM17	DE47-20009A	THERMOSTAT	PW2N-520PB,160/60,250V/7.5A,H	1	MG-TCO
MM17	DE47-20010A	THERMOSTAT	PW-2N(120/60)187Y,250V7.5A,12	1	CAV-TCO
MM18	DE74-20102D	TRAY-COOKING	GLASS,T6,-,890g	1	
MM19	DE97-00193B	ASSY-GUIDE ROLLER	NC2000 0.6,T2*P1198(14	1	
MM20	DE67-00140A	COUPLER	NC2000(0.6~0.8),PPS(ESS840),-,3G	1	
MM21	DE39-40409A	WIRE HARNESS-E	230V50HZ,M9G45,CTW,-,-,-	1	H/EART
MM22	DE31-10154A	MOTOR-SYNCHRONOUS	M2HJ49ZR02,ST-16,50/60	1	
MM25	DE65-20014A	CABLE CLAMP	-,-,-,NY-66,-,DA-6N	1	P-CORD
MM26	DE71-00148A	COVER-BLOWER	MW850WA,PP,T1.5,-,-,-,NTR,N	1	
MM27	DE61-40066A	FOOT	-,PP,-,BLK,-,-,-	2	
MM28	DE80-00023A	BASE-PLATE	MW850WA,SGCC1,T0.6,-,-,NC2000	1	
MM29	2501-001016	C-OIL	950nF,2.1KV,BK,35x54x80,20mm	1	
MM30	DE61-00139A	BRACKET-HVC	NC2000,SECC,T0.8,-,-,-,0.6/0	1	
MM31	DE59-00002A	DIODE-H.V	ESJC13-12B,12KV,-,-,-,MWO ALL,	1	
MM32	DE91-70061B	ASSY-H.V.FUSE	THV060T-0750-H,5KV/0.75A,R	1	
MM55	3601-001019	FUSE-CARTRIDGE	250V,12A,SLOW-BLOW,CERAMI	1	
MM57	DE61-50576A	BRACKET-HEATER	-,STS430,T0.5,W70,L70,-,-	1	
MM59	DE71-60451A	COVER-BACK	3RD-0.7,SECC,T0.5,W115,L332,-	1	
MM60	DE63-20017A	GASKET-HEATER	-,BRASS,T1.5,OD30.5,ID22.5	1	
MM61	DE47-00004A	HEATER-GRILL	SHG-2733E,-,-,1100W(1080W),	1	
MM62	DE61-70060A	SPRING-PLATE	-,SK-5,T0.5,T0.5,-,-,-,-,-,	1	
MM63	DE61-30008A	SUPPORT-HEATER	ALUMINA,-,T12,CE745G,-,	1	
MM64	DE74-70071D	RACK-WIRE	MSWR10,PI3,0.7/NC2000,D230,H85	1	CE282DN
MM64	DE97-00106A	ASSY-WIRE RACK	CE2713T,CURSTY-TRAY,-,-,-,-	1	CE282DNT/CE282DNT-YELLOW
MM67	DE61-00143A	BRACKET-UPPER	MW850WA,SECC,T0.5,-,-,-,NC	1	
MM68	6031-001424	WASHER-PLAIN	PTFE,-,ID22.2,OD28,T1.7,WHT	1	
MM88	DE73-90027B	FERRITE	RU65(RU15*28.6*6.5),-,M2L(Fe2O3+	1	

## 7-3 Control Parts List

No.	Code No.	Description	Specification	Q'ty	Remark
MC01		ASSY CONTROL-BOX		1	S.N.A
MC03	DE64-00499C	CONTROL-PANEL(E)	CE282DN,ABS(HG0760),-,-	1	CE282DN
MC03	DE64-00499E	CONTROL-PANEL(E)	CE282DNT/XEF,ABS(HG0760),PURE-WHT,	1	CE282DNT
MC03	DE64-00499F	CONTROL-PANEL(E)	CE282DNT-Y/XEF,ABS(HG0760),CREAM-Y	1	CE282DNT-YELLOW
MC06	DE64-00505A	WINDOW-DISPLAY	M187DN,SAN(CR5381),-,-,-,	1	
MC07	RC-EASY12-00	ASSY PCB PARTS	CE282DN,230V50HZ	1	
MC09	DE64-00509B	KNOB-POWER(E)	CE282DN/CE292DN,ABS(HG0760	1	CE282DN,CE282DNT
MC09	DE64-00509C	KNOB-POWER(E)	CE282DNT-Y/XEF,ABS(HG0760),CREAM-YE	1	CE282DNT-YELLOW
MC11	DE64-00508A	KNOB-TIMER(E)	M182DN,ABS(HG0760),-,-,-,-	1	CE282DN,CE282DNT
MC11	DE64-00508B	KNOB-TIMER(E)	CE282DNT-Y/XEF,ABS(HG0760),CREAM-YEL	1	CE282DNT-YELLOW
MC13	DE94-00698C	ASSY CONTROL-PANEL	230V50HZ,CE282DN,PURE	1	CE282DN
MC13	DE94-00698E	ASSY CONTROL-PANEL	230V50HZ,CE282DNT/XEF,PURE-WHT,SEF	1	CE282DNT
MC23	DE64-00517A	BUTTON-CLOCK	M187DN,SAN,-,-,SMOG,C-DESIG	1	
MC41	DE63-00108A	CUSHION-PCB	M182DN/M187DN,PUT-FOAM,T10,W	1	
MD01	DE94-00723F	ASSY DOOR	CE282DN/CE287DN,PURE-WHT,TDS+S	1	CE282DN,CE282DNT
MD01	DE94-00723R	ASSY DOOR	CE282DNT-Y/XEF,CREAM-YELLO	1	CE282DNT-YELLOW
MD02	DE64-00494A	DOOR-A	M181DN,ABS(HG0760),-,-,-,-,W9501,	1	CE282DN,CE282DNT
MD02	DE64-00494B	DOOR-A	M181DN-Y/MC181DN-Y,ABS(HG076	1	CE282DNT-YELLOW
MD03	DE64-00496A	SCREEN-DOOR	M181DN,SAN(CR5381),-,-,-,-,G	1	
MD04	DE94-00351B	ASSY DOOR-E(COATING)	MW850WA,BLK-COATING	1	
MD05	DE64-00221D	FILM-DOOR	-,-,T0.15,W264*L143,-,-,-,NC08	1	
MD06	DE64-40008B	DOOR-C	-,-,PP,CE745G,-,-,-,BLK,-	1	
MD07	DE61-00198A	SPRING-KEY	M1877,HSWR,D6,-,-,23 1/4,23 1	1	
MD10	DE64-00211A	DOOR-KEY	NC2000(0.6/0.8/1.2),PP,-,BLK,-,	1	
MD14	DE64-00504B	HANDLE-DOOR	M182DN/M187DN,ABS(HG0760),-,-,	1	CE282DN,CE282DNT
MD14	DE64-00504C	HANDLE-DOOR	M182DN-Y/MC181DN-Y,ABS(HG0760),-,-,	1	CE282DNT-YELLOW

S.N.A : SERVICE NOT ASSEMBLY

## 7-4 Standard Parts List

Code No.	Description	Specification	Q'ty	Remark
DE60-10012A	SCREW-TAP TITE	-,SWR10,M4,L10,TH,+,-,3,ZPC2,-	1	N/FILTER
DE60-10012A	SCREW-TAP TITE	-,SWR10,M4,L10,TH,+,-,3,ZPC2,-	1	P-CORD
DE60-10018A	SCREW-ASSY MACHINE	-,WS,MSWR10,SN1,PH,M4X0.7P,-,8,-,-	2	BKT-HEATER
DE60-10063A	SCREW-TAP TH	-,FEFN,-,TH,M4,-,L12,-,-	1	P/OUTER
DE60-10080B	SCREW-WASHER	-,2S,SWRCH18A,ZP2,PH,PI5,-,L10,-,-	4	HVT
DE60-10080B	SCREW-WASHER	-,2S,SWRCH18A,ZP2,PH,PI5,-,L10,-,-	4	MGT
DE60-10082H	SCREW-A	-,,-,-,2S-4X12,TOOTHED,-,-,-,-	2	B-LATCH
DE60-10082H	SCREW-A	-,,-,-,2S-4X12,TOOTHED,-,-,-,-	3	B-PLATE
DE60-10082H	SCREW-A	-,,-,-,2S-4X12,TOOTHED,-,-,-,-	1	BKT-UPPER
DE60-10082H	SCREW-A	-,,-,-,2S-4X12,TOOTHED,-,-,-,-	1	C-BLOWER
DE60-10082H	SCREW-A	-,,-,-,2S-4X12,TOOTHED,-,-,-,-	1	CON-BOX
DE60-10082H	SCREW-A	-,,-,-,2S-4X12,TOOTHED,-,-,-,-	1	COVER-AIR
DE60-10082H	SCREW-A	-,,-,-,2S-4X12,TOOTHED,-,-,-,-	4	OUT-PANEL
DE60-10098A	SCREW-ASSY TAP TITE	-,GLD,SWRCH18A,ZPC2,PH,TC,-,M4X8,WT,-	1	BOTT-TCO
DE60-10098A	SCREW-ASSY TAP TITE	-,GLD,SWRCH18A,ZPC2,PH,TC,-,M4X8,WT,-	1	CVT-TCO
DE60-10098A	SCREW-ASSY TAP TITE	-,GLD,SWRCH18A,ZPC2,PH,TC,-,M4X8,WT,-	1	D-MOTOR
DE60-10098A	SCREW-ASSY TAP TITE	-,GLD,SWRCH18A,ZPC2,PH,TC,-,M4X8,WT,-	2	MGT-TCO
DE60-10195A	SCREW-STAR POLE	-,SWCH18A,4,12,TH,*,-,2,ZNC,-	2	C-BACK
DE60-20063A	BOLT-FLANGE	M4,10,ZPC3,YEL,MSWR,-,-,-,-	2	H/LOWER
DE60-20063A	BOLT-FLANGE	M4,10,ZPC3,YEL,MSWR,-,-,-,-	2	H/UPPER
DE60-30016A	NUT-FLANGE	M4,MSWR10,-,-,-,-,-,-	2	F-MOTOR
DE60-10088A	SCREW-TAP PH	-,FEFZY,PLAIN,PH,M3,-,L8,-,-	8	
DE60-10069A	SCREW-TAP TH	-,FRFZY,-,TH,M4,-,L10,-,-	2	
DE60-10012A	SCREW-TAP TITE	-,SWR10,M4,L10,TH,+,-,3,ZPC2,-	1	B/COVER
DE60-10098A	SCREW-ASSY TAP TITE	-,GLD,SWRCH18A,ZPC2,PH,TC,-,M4X8,WT,-	1	